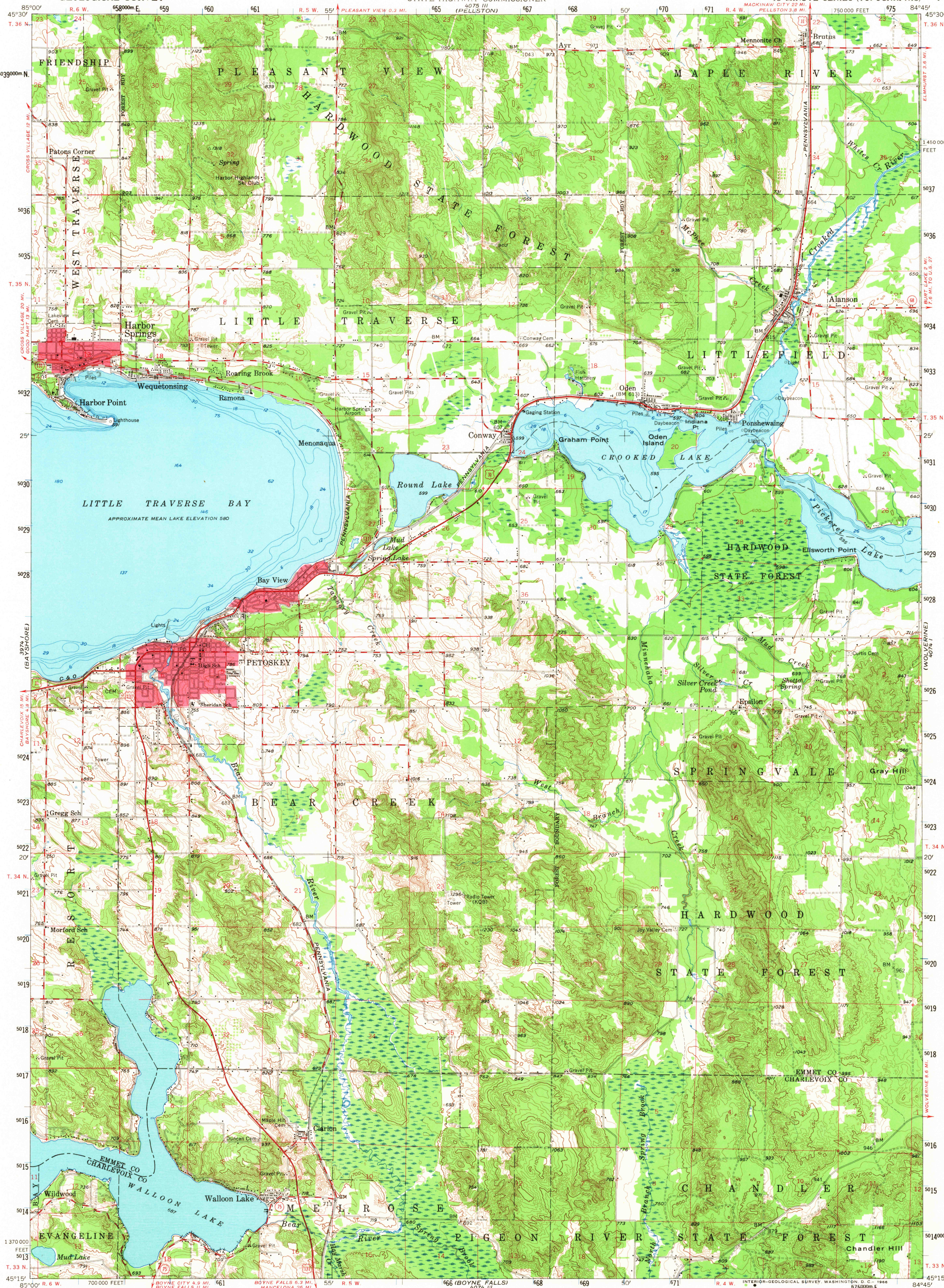


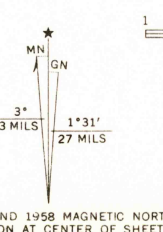
UNITED STATES
DEPARTMENT OF THE INTERIOR
GEOLOGICAL SURVEY

MICHIGAN
STATE HIGHWAY DEPARTMENT
JOHN C. MACKIE
STATE HIGHWAY COMMISSIONER

PETOSKEY QUADRANGLE
MICHIGAN
15 MINUTE SERIES (TOPOGRAPHIC)



Mapped, edited, and published by the Geological Survey
Control by USGS and USC&GS
Topography from aerial photographs by photogrammetric methods
Aerial photographs taken 1953-1956. Field check 1958
Hydrography compiled from U. S. Lake Survey charts 66 (1958) and
706 (1957)
Polyconic projection. 1927 North American datum
10,000-foot grid based on Michigan coordinate system, central zone
1000-meter Universal Transverse Mercator grid ticks,
zone 16, shown in blue
Red tint indicates areas in which only
landmark buildings are shown



CONTOUR INTERVAL 20 FEET
DATUM IS MEAN SEA LEVEL
DEPTH CURVES AND SOUNDINGS IN FEET-DATUM IS 578 FEET
FOR LITTLE TRVERSE BAY AND 596 FEET FOR CROOKED LAKE AND PICKEREL LAKE

THIS MAP COMPLIES WITH NATIONAL MAP ACCURACY STANDARDS
FOR SALE BY U. S. GEOLOGICAL SURVEY, WASHINGTON, D. C. 20242
A FOLDER DESCRIBING TOPOGRAPHIC MAPS AND SYMBOLS IS AVAILABLE ON REQUEST

USGS
Historical File
Topographic Division
ROAD CLASSIFICATION
Heavy duty Light duty
Medium duty Unimproved dirt
U. S. Route State Route

U.S.G.S.
FILE COPY
TOPOGRAPHIC DIVISION

PETOSKEY, MICH.
N4515-W8445/15

1958

AMS 4074 IV-SERIES V762

2655