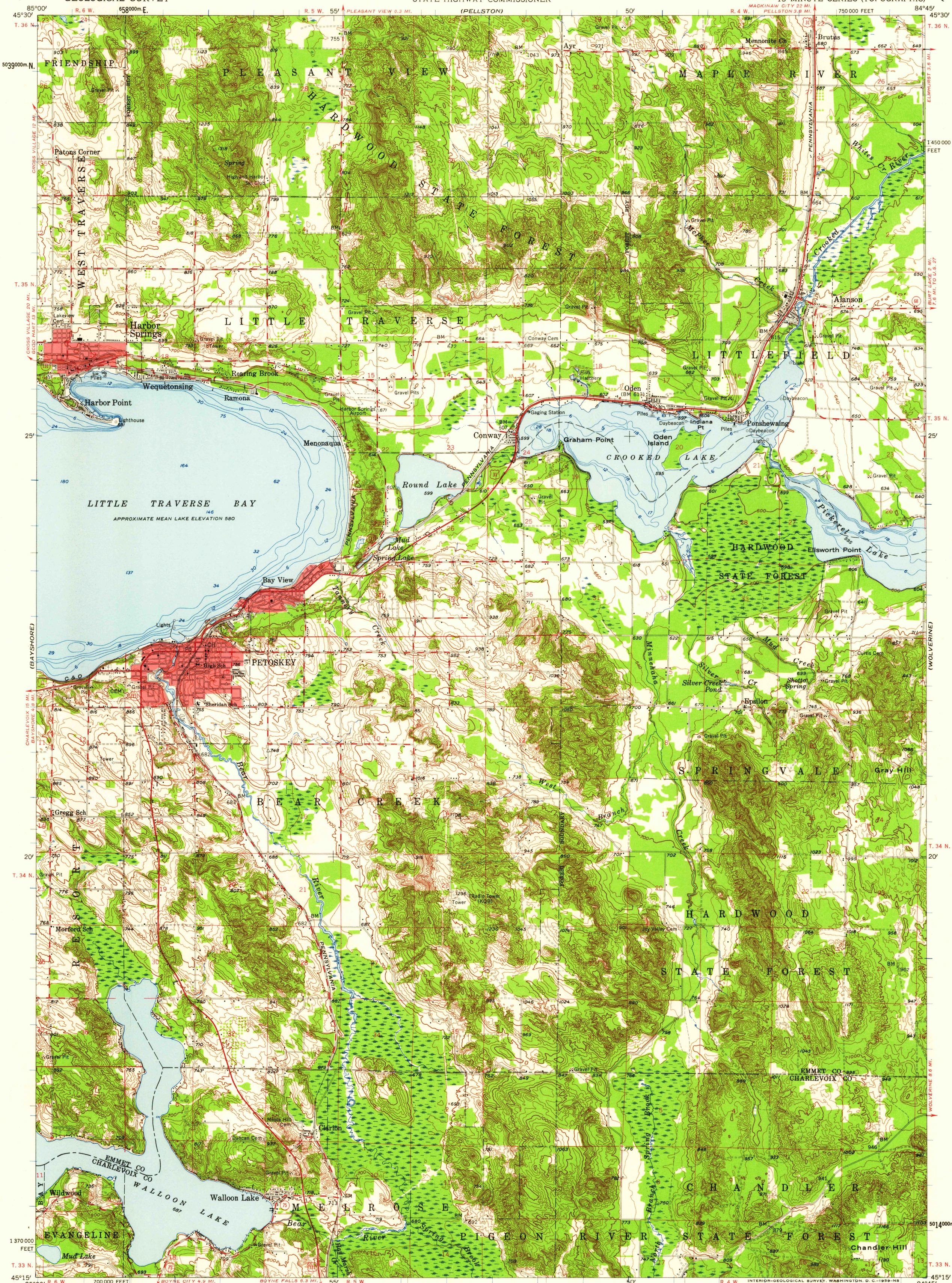


UNITED STATES  
DEPARTMENT OF THE INTERIOR  
GEOLOGICAL SURVEY

MICHIGAN  
STATE HIGHWAY DEPARTMENT  
JOHN C. MACKIE  
STATE HIGHWAY COMMISSIONER

PETOSKEY QUADRANGLE  
MICHIGAN  
15 MINUTE SERIES (TOPOGRAPHIC)



Mapped, edited, and published by the Geological Survey  
Control by USGS and USC&GS  
Topography from aerial photographs by photogrammetric methods  
Aerial photographs taken 1953-1956. Field check 1958  
Hydrography compiled from U. S. Lake Survey charts 65 (1958) and 706 (1957)  
Polyconic projection. 1927 North American datum  
10,000-foot grid based on Michigan coordinate system, central zone  
1000-meter Universal Transverse Mercator grid ticks, zone 16, shown in blue  
Red tint indicates areas in which only landmark buildings are shown

SCALE 1:62,500  
CONTOUR INTERVAL 20 FEET  
DATUM IS MEAN SEA LEVEL  
DEPTH CURVES AND SOUNDINGS IN FEET—DATUM IS 578 FEET  
FOR LITTLE TRVERSE BAY AND 596 FEET FOR CROOKED LAKE AND PICKEREL LAKE  
THIS MAP COMPLIES WITH NATIONAL MAP ACCURACY STANDARDS  
FOR SALE BY U. S. GEOLOGICAL SURVEY, WASHINGTON 25, D. C.  
A FOLDER DESCRIBING TOPOGRAPHIC MAPS AND SYMBOLS IS AVAILABLE ON REQUEST

USGS  
Historical File  
Topographic Division  
ROAD CLASSIFICATION  
Heavy-duty  
Medium-duty  
Unimproved dirt  
U. S. Route  
State Route  
QUADRANGLE LOCATION  
PETOSKEY, MICH.  
N 4515—W 8445/15  
1958

U.S.G.S.  
FILE COPY  
TOPOGRAPHIC DIVISION

807 - 9 1959

2470