

Board of Survey & Maps
NAVY COPY
Map Information Office
RECEIVED
NOV 22 1920
Map Information Office

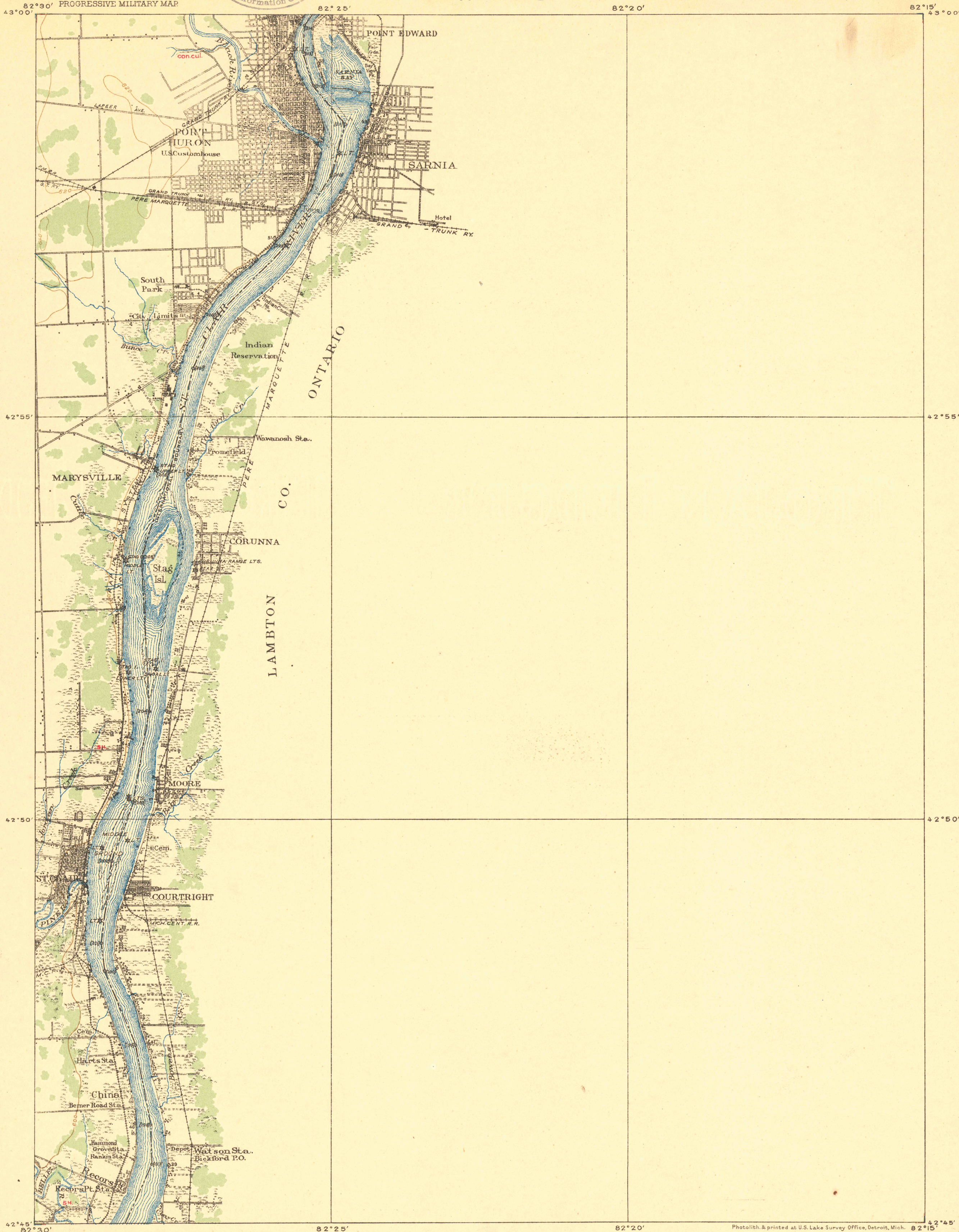
CONFIDENTIAL

No military notes
accompany this map.

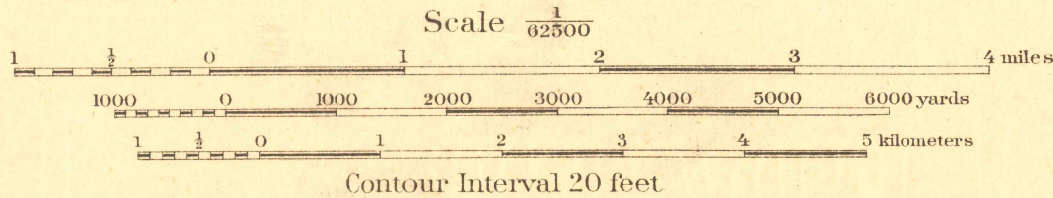
CONTROLLED RECONNAISSANCE SHEET
762-N-II-W $\frac{1}{2}$

MICHIGAN
PORT HURON QUADRANGLE

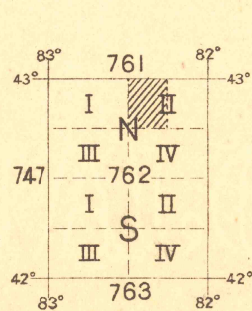
CORPS OF ENGINEERS, U.S. ARMY
PROGRESSIVE MILITARY MAP



Survey and drafting under the direction of
Lieut. Col. George A. Zinn, Corps of Engineers, U.S. A.
Department Engineer, Central Division.
Field work by J. F. Landis, 2nd Lieut. 7th Infantry, in 1912.
G. A. Hussey, Jr. Engr. Draftsman.
Map drawn in 1914.
Partial office revision made by Lake Survey March, 1919.



NOTE: OFFICERS USING THIS MAP WILL MARK HEREON CORRECTIONS AND ADDITIONS WHICH COME
TO THEIR ATTENTION AND MAIL DIRECT TO "THE CHIEF OF ENGINEERS, WASHINGTON, D. C."



Telegraph and Telephone Lines on
all Rail Roads and Main Roads.
Dimensions of Bridges shown as follows:
Length X Height above water.

APPROXIMATE MEAN
DECLINATION 1918

Port Huron
Michigan