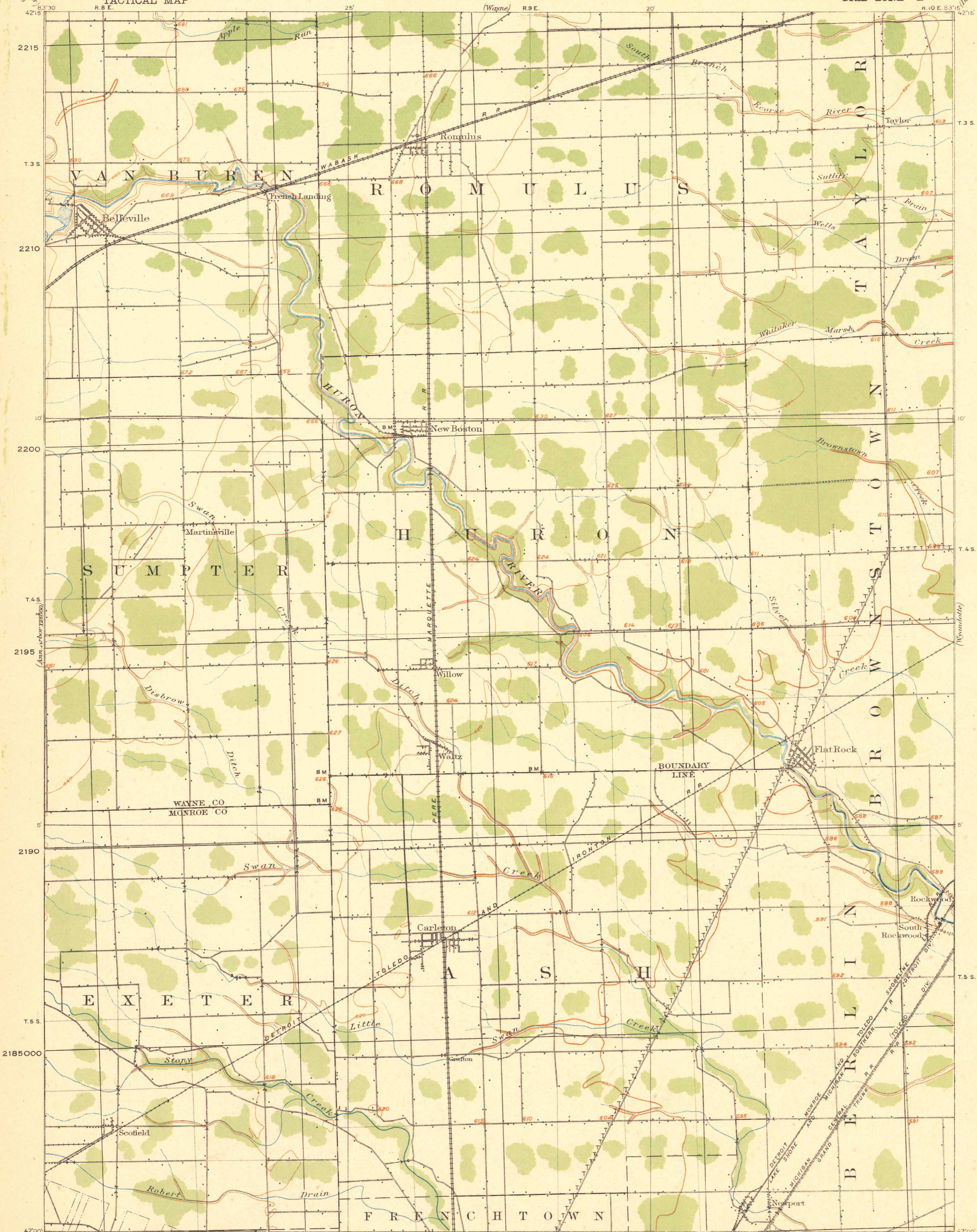


HARRIMAN INDEX 2646:1000/49:
TACTICAL INDEX 747-S-IV-W/2

MICHIGAN
ROMULUS QUADRANGLE
GRID ZONE "B"

CORPS OF ENGINEERS, U. S. ARMY

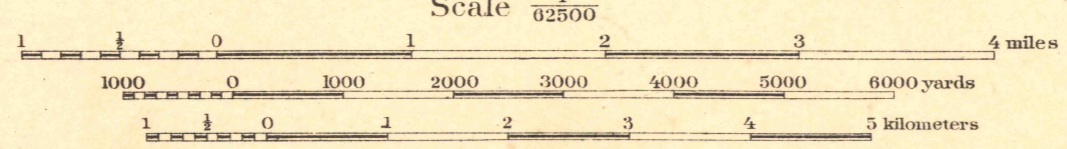
TACTICAL MAP



Survey and drafting under the direction of
Lieut. Col. George A. Zinn, Corps of Engineers, U. S. A.
Department Engineer, Central Division.
Field work under the immediate supervision of
2nd Lieut. William A. Beach, 23rd Infantry, 1912.
Map drawn in 1913.

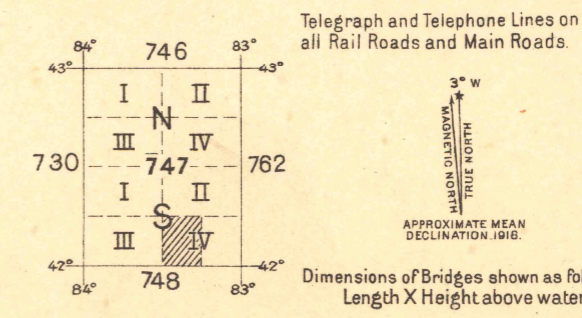
SURVEYED IN COOPERATION WITH THE STATE OF MICHIGAN.
Additions by William A. Beach, 2nd Lieut. 23rd Infantry,
Nov. and Dec. 1912.

Road Legend.
Excellent Concrete



FIVE THOUSAND YARD GRID COMPUTED FROM "GRID SYSTEM FOR PROGRESSIVE MAPS
IN THE U. S." ZONE B, U. S. C. & G. S. SPECIAL PUBLICATION NO. 59
(THE LAST THREE DIGITS OF THE GRID NUMBERS ARE OMITTED)

NOTE: OFFICERS USING THIS MAP WILL MARK HEREON CORRECTIONS AND ADDITIONS WHICH COME
TO THEIR ATTENTION AND MAIL DIRECT TO "THE CHIEF OF ENGINEERS, WASHINGTON, D. C."



Engineer Reproduction Plant, U. S. Army, Washington, D. C.
R-1928

FILE COPY
MAP INFORMATION OFFICE

ROMULUS
MICHIGAN