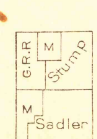


1935

C.H. Birdseye, Chief Topographic Engineer.
W.H. Heron, Geographer in charge.
Topography by C.L. Sadler, C.W. Stump, Jr.,
T.R. Maft, and G.R. Richardson.
Control by U.S. Coast and Geodetic Survey, Oscar Jones,
J.R. Ellis, and E.C. Bibbee.
Surveyed in 1919.



Scale 62500
1 1/2 0 1 2 3 4 Miles
1 1/2 0 1 2 3 4 5 Kilometers
Contour interval 10 feet.
Datum is mean sea level.

Polyconic projection, North American datum.
APPROXIMATE MEAN
DECLINATION, 1919

SURVEYED IN COOPERATION WITH THE STATE OF MICHIGAN.