

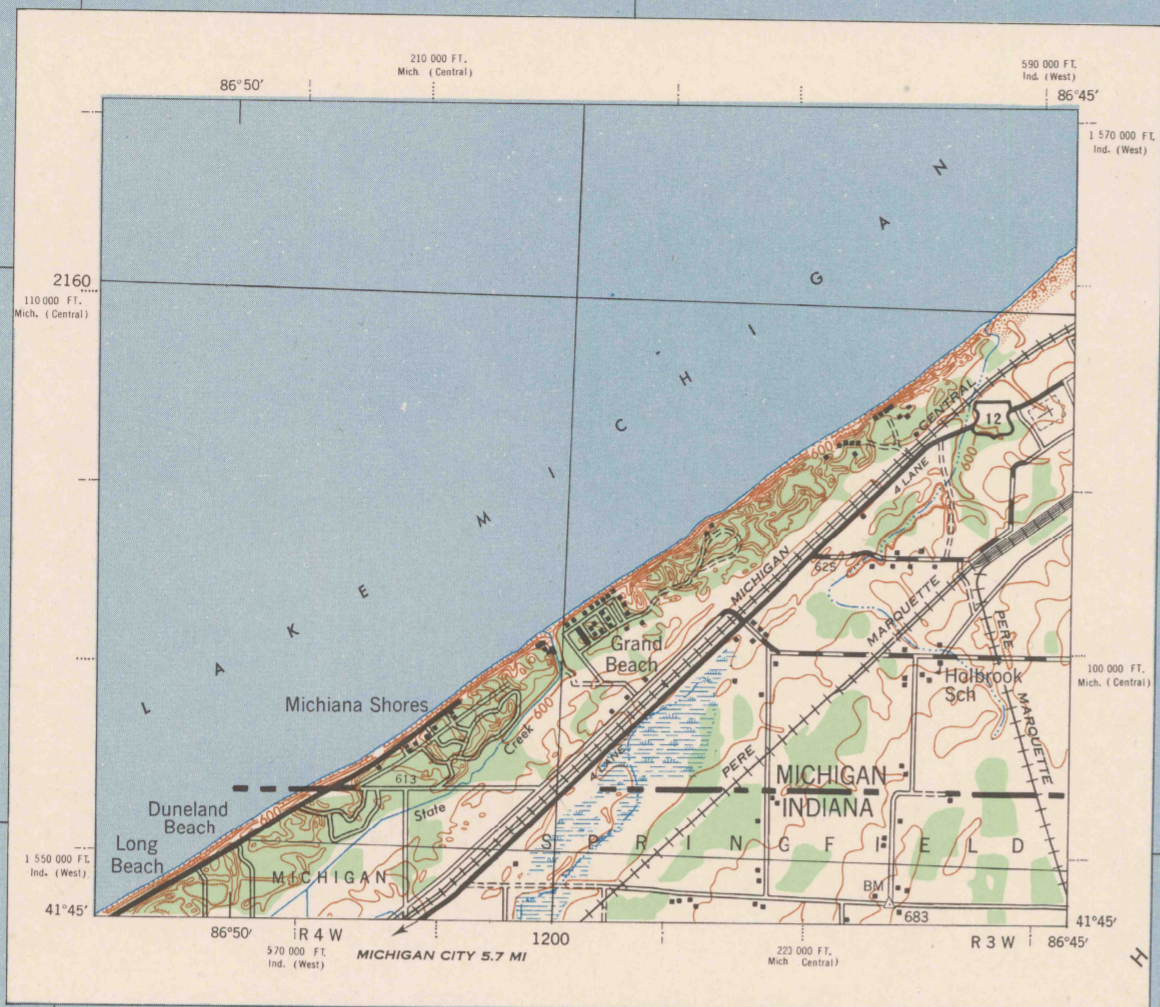
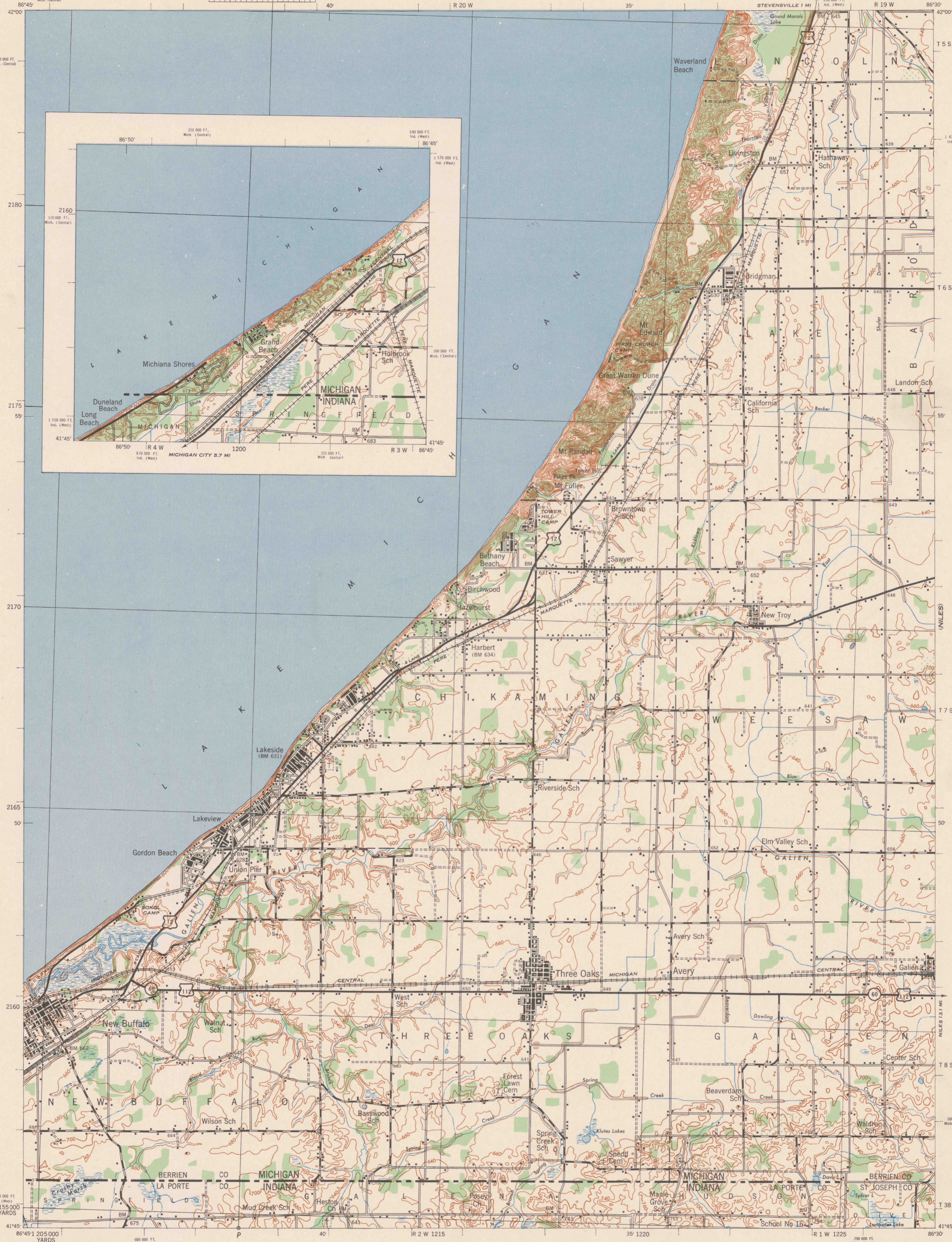
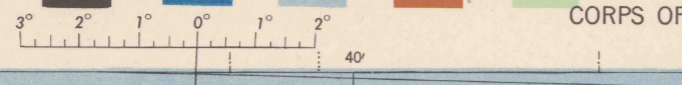
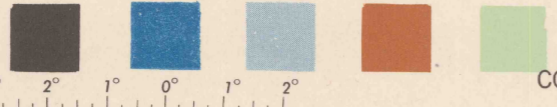
MICHIGAN 1:62,500

WAR DEPARTMENT
CORPS OF ENGINEERS, U. S. ARMY

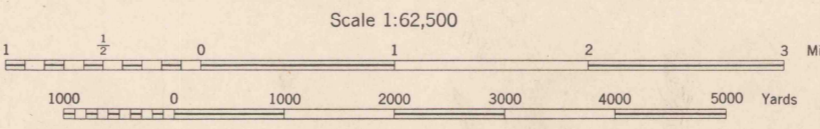
FIRST EDITION - AMS 1

THREE OAKS QUADRANGLE
15 MINUTE SERIES

(BENTON HARBOR)

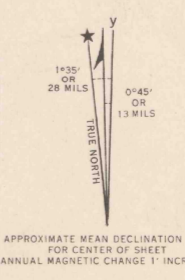


First Edition (A.M.S. 1), 1944.
Prepared under the direction of the Chief of Engineers, U. S. Army, by the
Army Map Service (Q1), U. S. Army, Washington, D. C., 1943.
Based on U. S. G. S. quadrangle, Three Oaks, 1:62,500 (11930).
Control by U. S. Geological Survey.
Surveyed in cooperation with the State of Michigan, 1926-1927.
Revised from single lens vertical aerial photographs
Aerial photography - A. A. Department of Agriculture, 1938.
Polyconic Projection, North American datum 1927.



Scale 1:62,500
CONTOUR INTERVAL 20 FEET
DATUM IS MEAN SEA LEVEL

FIVE THOUSAND YARD GRID COMPUTED FROM "GRID SYSTEM FOR PROGRESSIVE MAPS
IN THE U. S. ZONE"; U. S. C. & G. S. SPECIAL PUBLICATION NO. 59
THE LAST THREE DIGITS OF THE GRID NUMBERS ARE OBTAINED
THE STATE GRIDS ARE INDICATED FOR MICHIGAN ZONE CENTRAL BY TICKS FOR
INDIANA ZONE WEST BY TICKS OUTSIDE THE NEAT LINE AT 10 000 FT. INTERVALS
NOTE: OFFICERS USING THIS MAP WILL MAKE NECESSARY CORRECTIONS AND ADJUSTMENTS WHICH COME
TO THEIR ATTENTION AND MAIL DIRECT TO THE CHIEF OF ENGINEERS, WASHINGTON, D. C.



Use diagram only to obtain numerical values.
To determine magnetic north line, connect the
pivot point "P" on the south edge of the map
with the value of the angle between GRID NORTH
and MAGNETIC NORTH, as plotted on
the degree scale at the north edge of the map.

THREE OAKS, MICH.-IND.
N4145-W8630/15X20

MICHIGAN

ROAD CLASSIFICATION 1943

Dependable hard surface, heavy duty road	Loose surface graded, dry weather road	U. S. Route 160
Secondary hard surface, all-weather road	Dirt road	State Route 30
More than two lanes indicated by note along road with tick at point of change		3 LANE 4 LANE

FILE COPY
MAP INFORMATION OFFICE