

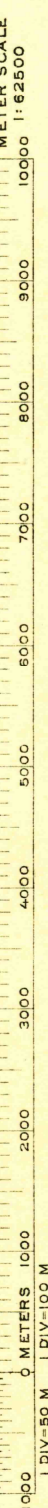
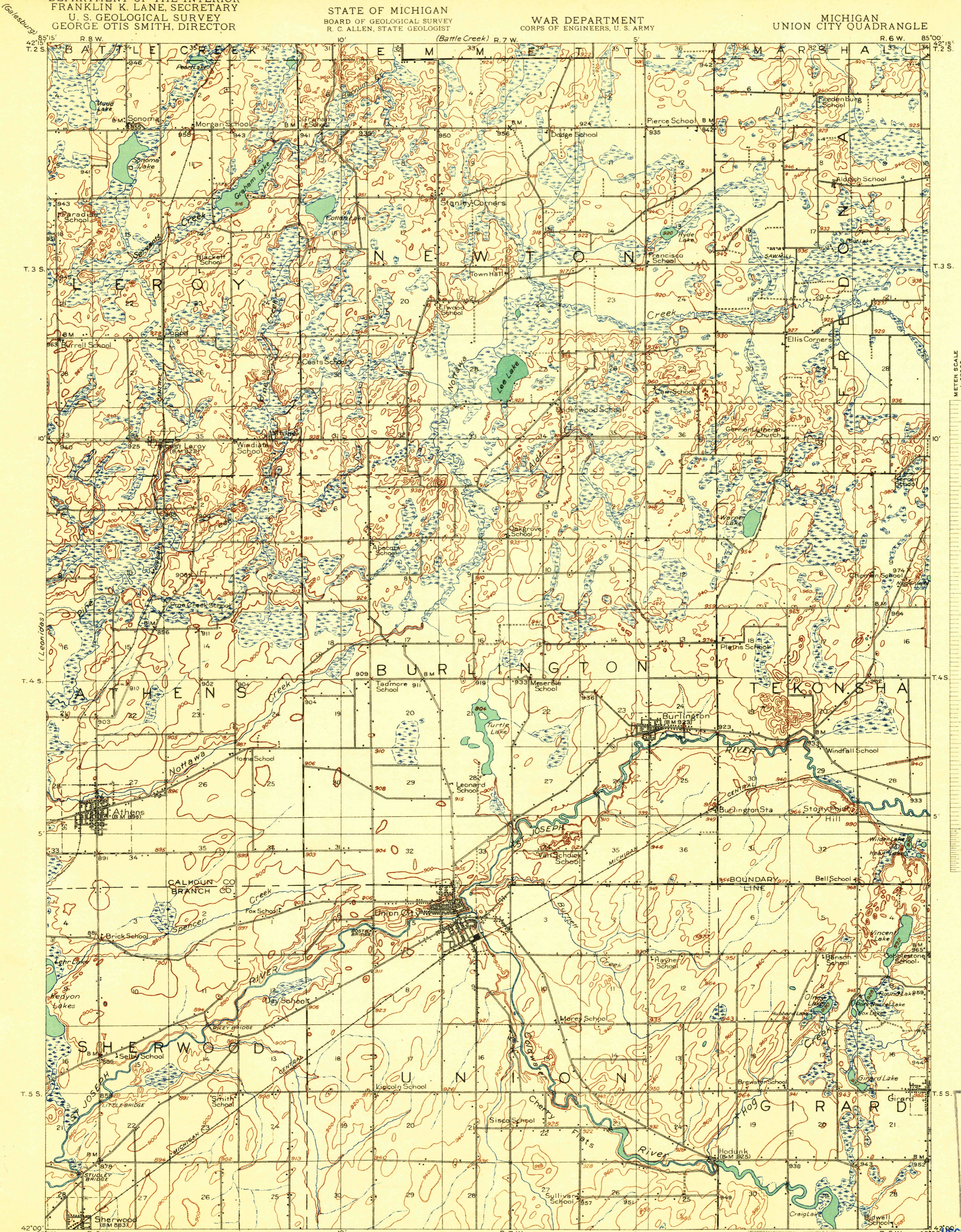
TOPOGRAPHY

DEPARTMENT OF THE INTERIOR
FRANKLIN K. LANE, SECRETARY
U. S. GEOLOGICAL SURVEY
GEORGE OTIS SMITH, DIRECTOR

STATE OF MICHIGAN
BOARD OF GEOLOGICAL SURVEY
R. C. ALLEN, STATE GEOLOGIST

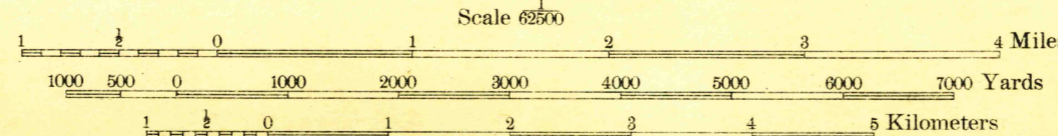
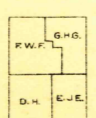
WAR DEPARTMENT
CORPS OF ENGINEERS, U. S. ARMY

MICHIGAN
UNION CITY QUADRANGLE



U. S. G. S.
FILE COPY
Ed. Div. Topographic Maps.

R. B. Marshall, Chief Geographer.
W. H. Herron, Geographer in charge.
Topography by Duncan Hannegan, G. H. Guerdum,
F. W. Farnsworth, and E. J. Essick.
Control by H. S. Senseney, C. H. Davey, and E. E. Harris.
Surveyed in 1917.



Contour interval 20 feet.
Datum is mean sea level.

APPROXIMATE MEAN
DECLINATION, 1917

USCS
Historical File
Topographic Division

JUN 21 1918 5075

UNION CITY, Mich.