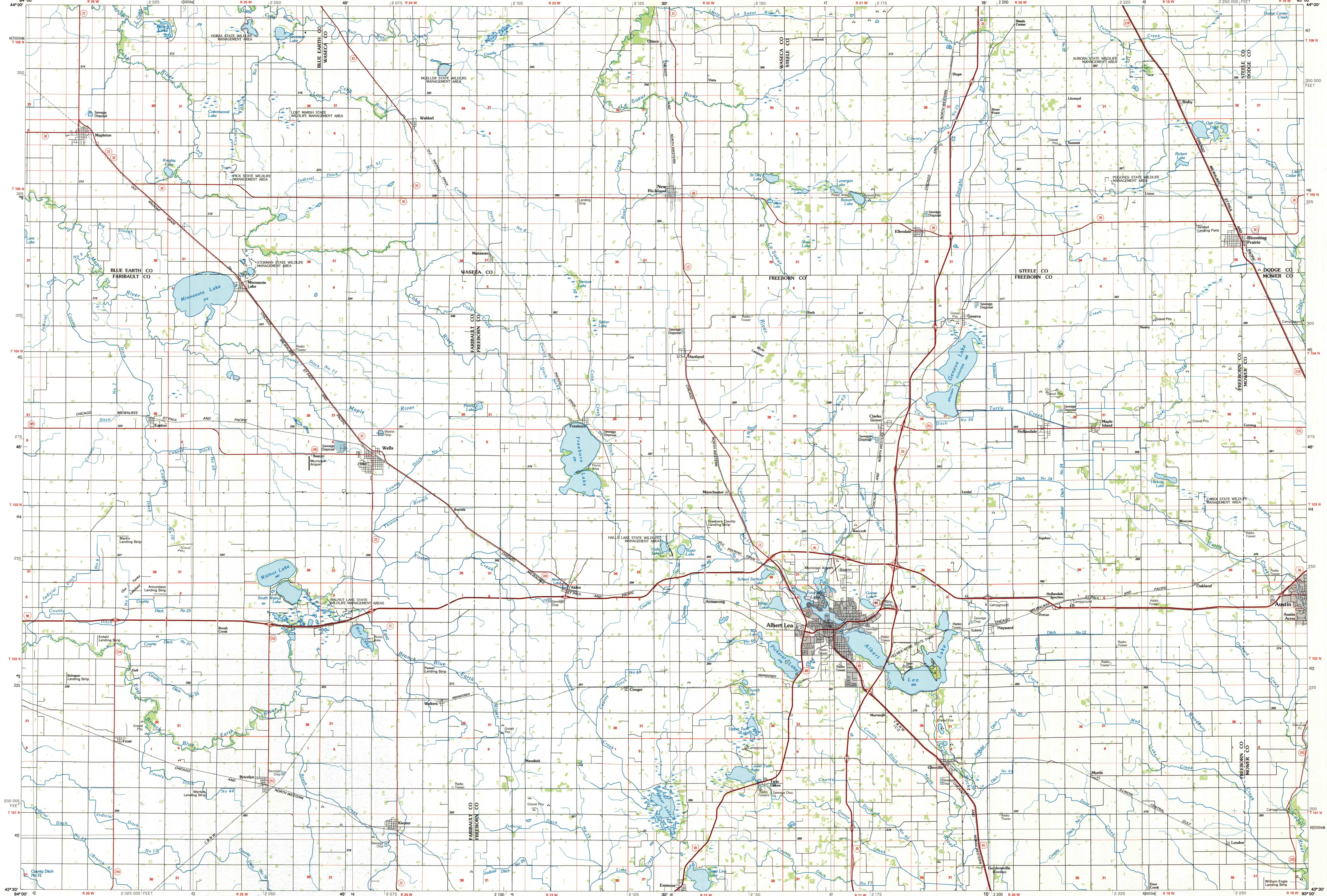


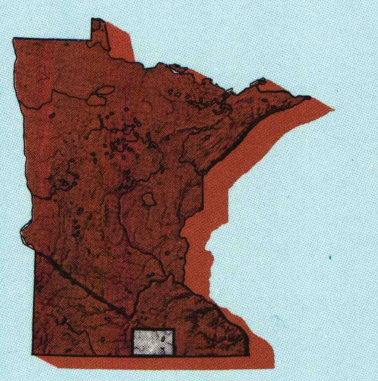
ALBERT LEA, MINNESOTA

30 X 60 MINUTE SERIES (PLANIMETRIC)



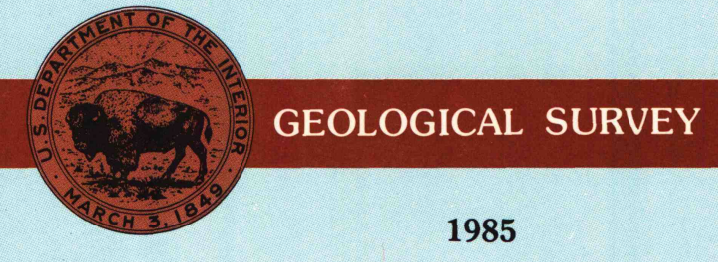
Albert Lea MINNESOTA

1:100 000-scale planimetric map



30 X 60 MINUTE QUADRANGLE SHOWING

- Elevations in meters
- Highways, roads and other manmade structures
- Water features
- Woodland areas
- Geographic names



Produced by the United States Geological Survey
 Compiled from USGS 1:24 000-scale topographic maps dated 1967-1982. Planimetry revised from aerial photographs taken 1980 and other source data. Revised information not field checked. Map edited 1985.
 Projection and 10 000-meter grid, zone 15, Universal Transverse Mercator
 25 000-foot grid ticks based on Minnesota coordinate system, south zone
 1927 North American Datum
 To place on the predicted North American Datum 1983, move the projection lines 6 meters north and 18 meters east.
 There may be private inholdings within the boundaries of the National or State reservations shown on this map.

NATIONAL GEODETIC VERTICAL DATUM OF 1929 ELEVATIONS SHOWN TO THE NEAREST METER

THIS MAP COMPLIES WITH NATIONAL MAP ACCURACY STANDARDS

CONVERSION TABLE		DECLINATION DIAGRAM		ADJOINING MAPS		
Meters	Feet	Diagram showing magnetic declination		1	2	3
1	3.2808			4	5	6
2	6.5617			7	8	
3	9.8425					
4	13.1234					
5	16.4043					
6	19.6852					
7	22.9661					
8	26.2470					
9	29.5279					
10	32.8088					

To convert meters to feet multiply by 3.2808
 To convert feet to meters multiply by 0.3048

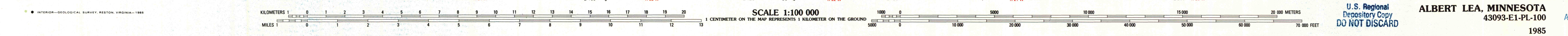
UTM grid convergence (GM) and magnetic declination (MD) at center of map. Diagram is approximate.

1 New Ulm
 2 Fairbairn
 3 Rochester
 4 Fairmont
 5 Austin
 6 Emburyville
 7 Mower City
 8 Charles City

FOR SALE BY U.S. GEOLOGICAL SURVEY RESTON, VIRGINIA 22092

Topographic Map Symbols

- Primary highway, hard surface
- Secondary highway, hard surface
- Light duty road, principal street, hard or improved surface
- Other road or street, trail
- Route marker: Interstate, U.S. State
- Railroad: standard gage; narrow gage
- Bridge: overpass; underpass
- Tunnel: road; railroad
- Built up area, locality, elevation
- Airport: landing field; landing strip
- National boundary
- State boundary
- County boundary
- National or State reservation boundary
- Land grant boundary
- U.S. public lands survey: range, township, section
- Range, township, section line: protracted
- Power transmission line; pipeline
- Dam; dam with lock
- Cemetery; building
- Windmill; water well; spring
- Mine shaft; adit or cave; mine, quarry; gravel pit
- Campground; picnic area; U.S. location monument
- Ruin; cliff dwelling
- Disturbed surface: strip mine; lava sand
- Contours: index; intermediate; supplementary
- Bathymetric contours: index; intermediate
- Stream, lake: perennial; intermittent
- Rapids, large and small; falls, large and small
- Area to be submerged; marsh, swamp
- Land subject to controlled inundation; woodland
- Scrub; mangrove
- Orchard; vineyard



A pamphlet describing topographic maps is available on request
 B006-9/8
 SEP 3 - 1985