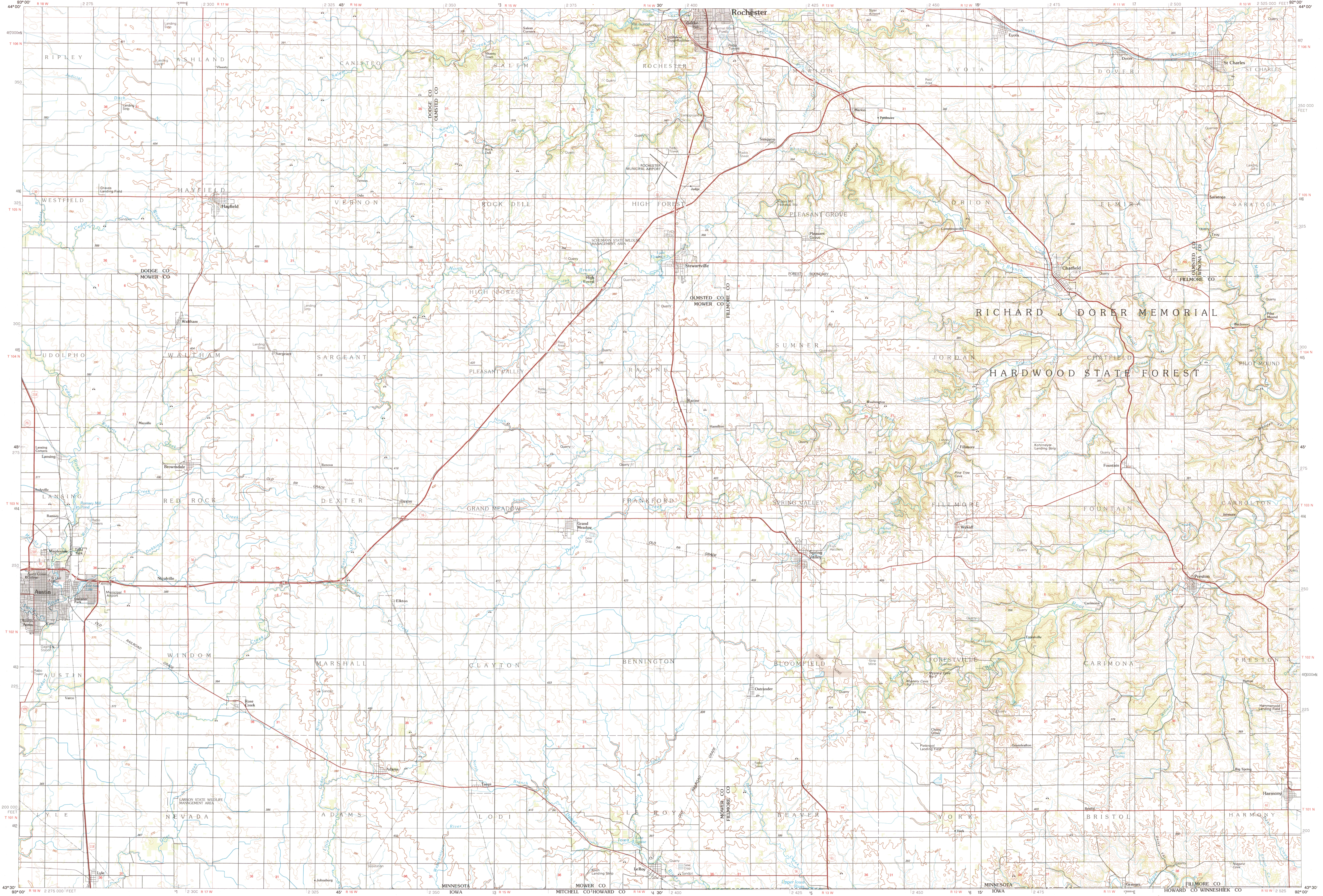


AUSTIN, MINNESOTA-IOWA

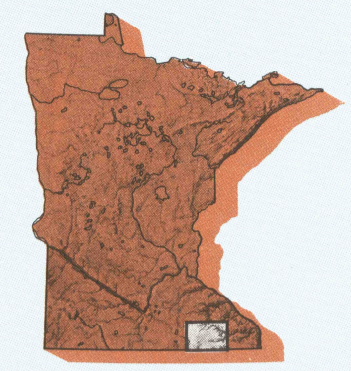
30X60 MINUTE SERIES (TOPOGRAPHIC)



# Austin

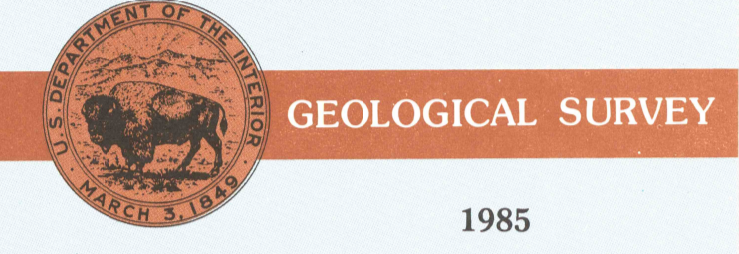
MINNESOTA-IOWA

1:100 000-scale metric topographic map



30 X 60 MINUTE QUADRANGLE SHOWING

- Contours and elevations in meters
- Highways, roads and other manmade structures
- Water features
- Wetland areas
- Geographic names



Produced by the United States Geological Survey  
 Compiled from USGS 1:24 000-scale topographic maps dated 1965-1982. Planimetry revised from aerial photographs taken 1982 and other source data. Revised information not field checked. Map edited 1985.  
 Projection and 10 000-meter grid, zone 15, Universal Transverse Mercator  
 25 000-foot grid ticks based on Minnesota coordinate system, south zone  
 1927 North American Datum  
 To place on the predicted North American Datum 1983, move the projection lines 6 meters north and 15 meters east.  
 There may be private inholdings within the boundaries of the National or State reservations shown on this map.

CONTOUR INTERVAL 10 METERS  
 NATIONAL GEODETIC VERTICAL DATUM OF 1929  
 ELEVATIONS SHOWN TO THE NEAREST METER

THIS MAP COMPLIES WITH NATIONAL MAP ACCURACY STANDARDS

CONVERSION TABLE		DECLINATION DIAGRAM		ADJOINING MAPS		
Meters	Feet	GN	MN	1	2	3
1	3.2808		GN MN 62' 30" 6 MILES	1	2	3
2	6.5617			4	5	
3	9.8425			6	7	
4	13.1234			8		
5	16.4042					
6	19.6850					
7	22.9659					
8	26.2467					
9	29.5275					
10	32.8084					

To convert meters to feet multiply by 3.2808  
 To convert feet to meters multiply by 0.3048  
 UTM grid convergence (GN and MN) at center of map  
 Diagram is approximate

1	Fairbault
2	Rochester
3	Winona
4	Albert Lea
5	La Crosse
6	Manassas City
7	Charleston City
8	Decorah

FOR SALE BY U.S. GEOLOGICAL SURVEY  
 DENVER, COLORADO 80225, OR RESTON, VIRGINIA 22092  
 USGS NMD HISTORICAL MAP  
 JAN 24 1990  
 REC'D FILE COPY

**Topographic Map Symbols**

Primary highway, hard surface	
Secondary highway, hard surface	
Light duty road, principal street, hard or improved surface	
Other road or street; trail	
Road marker: Interstate, U.S., State	
Railroad: standard gage; narrow gage	
Bridge: overpass; underpass	
Tunnel: road; railroad	
Built up area: locality; elevation	
Airport; landing field; landing strip	
National boundary	
State boundary	
County boundary	
National or State reservation boundary	
Land grant boundary	
U.S. public lands survey: range, township, section	
Range, township; section line: protruded	
Power transmission line: pipeline	
Dam; dike with lock	
Cemetery; building	
Windmill; water well; spring	
Mine shaft; adit or cave; mine, quarry; gravel pit	
Campground; picnic area; U.S. location monument	
Ruin; site dwelling	
Disturbed surface: strip mine, lava; sand	
Contours: index; intermediate; supplementary	
Bathymetric contours: index; intermediate	
Stream, lake: perennial; intermittent	
Rapids, large and small; falls, large and small	
Area to be submerged; marsh, swamp	
Land subject to controlled inundation; woodland	
Scrub; mangrove	
Orchard; vineyard	