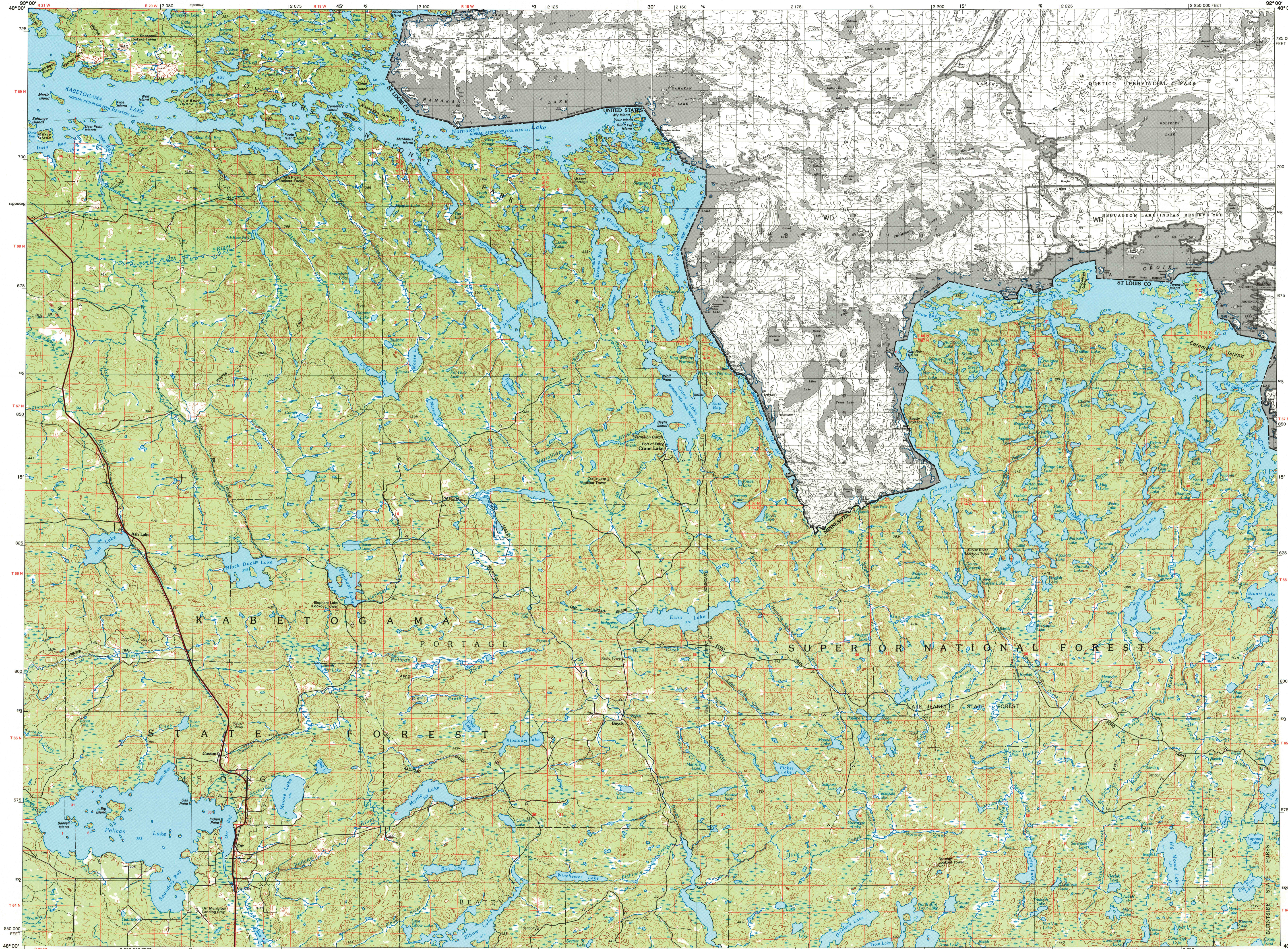


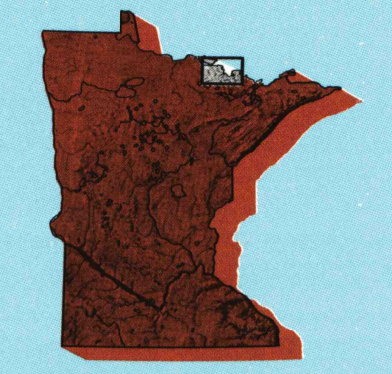
CRANE LAKE, MINNESOTA-ONTARIO

30 X 60 MINUTE SERIES (TOPOGRAPHIC)

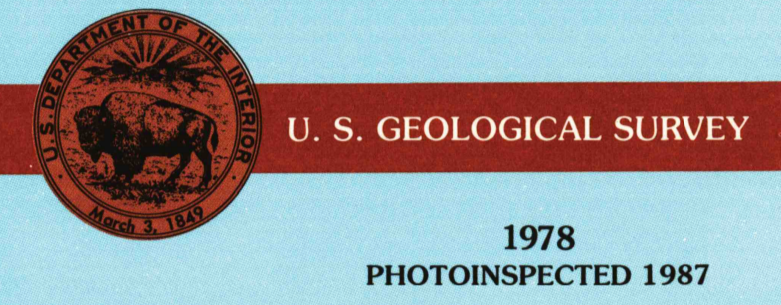


Crane Lake MINNESOTA-ONTARIO

1:100 000-scale metric topographic map



- 30 X 60 MINUTE QUADRANGLE SHOWING
- Contours and elevations
  - Highways, roads and other manmade structures
  - Water features
  - Woodland areas
  - Geographic names



Produced by the United States Geological Survey  
 Compiled from USGS 1:24 000-scale topographic maps dated 1963-1968. Map edited 1978  
 Canadian portion copied from Department of Energy, Mines and Resources. 1:50,000-scale topographic maps dated 1980  
 Canadian portion of this map © by Her Majesty the Queen in Right of Canada, and may not be reproduced or redistributed without express consent of Energy, Mines and Resources Canada, 6th Floor, 612 Booth Street, Ottawa, Ontario, K1A 0E9  
 1927 North American Datum (NAD 27). Projection and 10 000-meter grid: Universal Transverse Mercator, zone 15 25 000-foot ticks: Minnesota coordinate system, north zone  
 The difference between NAD 27 and North American Datum of 1983 (NAD 83) is too small to show at this scale. The values of the shift between the datums for 7.5-minute intersections are given in USGS Bulletin 1875  
 There may be private holdings within the boundaries of the National or State reservations shown on this map  
 The U.S. portion of this map photocopied using 1987 photographs  
 No major culture or drainage changes found

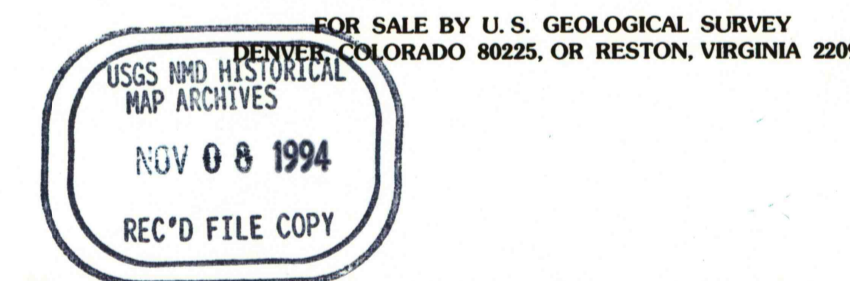
CONTOUR INTERVAL 10 METERS IN UNITED STATES  
 CONTOUR INTERVAL 50 FEET IN CANADA  
 NATIONAL GEODETIC VERTICAL DATUM OF 1929  
 ELEVATIONS SHOWN TO THE NEAREST METER IN UNITED STATES  
 ELEVATIONS SHOWN TO THE NEAREST FOOT IN CANADA  
 THE U.S. PORTION OF THIS MAP COMPLES WITH NATIONAL MAP ACCURACY STANDARDS

| CONVERSION TABLE |         | DECLINATION DIAGRAM |          | ADJOINING MAPS |   |   |  |  |
|------------------|---------|---------------------|----------|----------------|---|---|--|--|
| Meters           | Feet    | GN                  | M        | 1              | 2 | 3 |  |  |
| 1                | 3.2808  |                     | 62 MILES | 4              | 5 |   |  |  |
| 2                | 6.5616  |                     |          | 6              | 7 | 8 |  |  |
| 3                | 9.8424  |                     |          |                |   |   |  |  |
| 4                | 13.1232 |                     |          |                |   |   |  |  |
| 5                | 16.4040 |                     |          |                |   |   |  |  |
| 6                | 19.6848 |                     |          |                |   |   |  |  |
| 7                | 22.9656 |                     |          |                |   |   |  |  |
| 8                | 26.2464 |                     |          |                |   |   |  |  |
| 9                | 29.5272 |                     |          |                |   |   |  |  |
| 10               | 32.8080 |                     |          |                |   |   |  |  |

To convert meters to feet multiply by 3.2808  
 To convert feet to meters multiply by 0.3048

UTM grid convergence (GN) and 15° magnetic declination (M) at center of map  
 Diagram is approximate

1 International Falls  
 2 Brede Narrows  
 3 Littlefork  
 4 Littlefork  
 5 Basewood Lake  
 6 Digfork  
 7 Vermillion Lake  
 8 Ely



Topographic Map Symbols

- Primary highway, hard surface
- Secondary highway, hard surface
- Light duty road, principal street, hard or improved surface
- Other road or street; trail
- Route marker: Interstate, U.S. State
- Railroad: standard gauge, narrow gauge
- Bridge, overpass, underpass
- Tunnel: road, railroad
- Bulk oil area, locality, elevation
- Airport; landing field, landing strip
- National boundary
- State boundary
- County boundary
- Civil township boundary
- National or State reservation boundary
- Land grant boundary
- U.S. public lands survey: range, township, section
- Range, township, section line: protected
- Power transmission line; pipeline
- Dam; dam with lock
- Cemetery: building
- Well: oil, water, spring
- Mine shaft; adit or cave; mine, quarry, gravel pit
- Campground; picnic area; U.S. location monument
- Ruin; cliff dwelling
- Distorted surface: strip mine, lava, sand
- Contours: index, intermediate, supplementary
- Bathymetric contours: index, intermediate
- Stream: lake, perennial, intermittent
- Rapids, large and small; falls, large and small
- Area to be submerged; marsh, swamp
- Land subject to controlled inundation; woodland
- Scrub; mangrove
- Orchard; vineyard