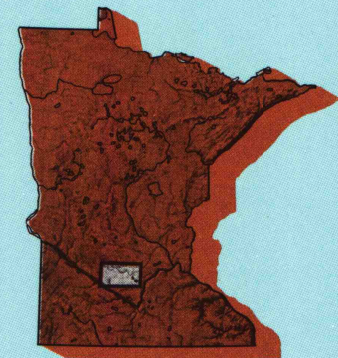


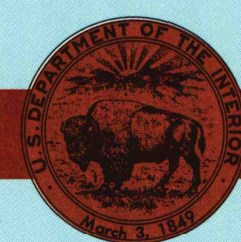
# Glencoe MINNESOTA

1:100 000-scale metric  
topographic map



30 X 60 MINUTE QUADRANGLE  
SHOWING

- Contours and elevations in meters
- Highways, roads and other manmade structures
- Water features
- Woodland areas
- Geographic names



GEOLOGICAL SURVEY

1986

Produced by the United States Geological Survey

Compiled from USGS 1:24 000-scale topographic maps dated 1964-1983. Planimetry revised from aerial photographs taken 1984 and other source data. Revised information not field checked. Map edited 1986.  
Projection and 10 000-meter grid, zone 15, Universal Transverse Mercator  
25 000-foot grid ticks based on Minnesota coordinate system, south zone  
1927 North American Datum  
To place on the predicted North American Datum 1983, move the projection lines 7 meters north and 21 meters east  
There may be private inholdings within the boundaries of the National or State reservations shown on this map

CONTOUR INTERVAL 5 METERS  
NATIONAL GEODETIC VERTICAL DATUM OF 1929  
ELEVATIONS SHOWN TO THE NEAREST METER

THIS MAP COMPLIES WITH NATIONAL MAP ACCURACY STANDARDS

CONVERSION TABLE		DECLINATION DIAGRAM	ADJOINING MAPS			
Meters	Feet		1	2	3	4
1	3.2808		1	2	3	4
2	6.5617					
3	9.8425					
4	13.1234					
5	16.4042					
6	19.6850					
7	22.9659					
8	26.2467					
9	29.5275					
10	32.8084					
To convert meters to feet multiply by 3.2808		UTM grid convergence (GN) and 1983 magnetic declination (M) at center of map Diagram is approximate	1 Willmar 2 Litchfield 3 Audubon 4 Monticello 5 Saint Paul 6 Tracy 7 New Ulm 8 Faribault			
To convert feet to meters multiply by 0.3048						

FOR SALE BY U.S. GEOLOGICAL SURVEY  
DENVER, COLORADO 80225, OR RESTON, VIRGINIA 22092

## Topographic Map Symbols

Primary highway, hard surface	
Secondary highway, hard surface	
Light duty road, principal street, hard or improved surface	
Other road or street; trail	
Route marker: Interstate; U.S.; State	
Railroad: standard gage; narrow gage	
Bridge; overpass; underpass	
Tunnel: road; railroad	
Built up area, locality, elevation	
Airport: landing field; landing strip	
National boundary	
State boundary	
County boundary	
National or State reservation boundary	
Land grant boundary	
U.S. public lands survey: range, township, section	
Range, township, section line, unconstructed	
Power transmission line; pipeline	
Dam; dam with lock	
Cemetery; building	
Windmill; water well; spring	
Mine shaft; adit or cave; mine, quarry; gravel pit	
Campground; picnic area; U.S. location monument	
Ruin; cliff dwelling	
Distorted surface: strip mine, lava; sand	
Contours: index; intermediate; supplementary	
Bathymetric contours: index; intermediate	
Stream, lake; perennial; intermittent	
Rapids, large and small; falls, large and small	
Area to be submerged; marsh, swamp	
Land subject to controlled inundation; woodland	
Scrub; mangrove	
Orchard; vineyard	

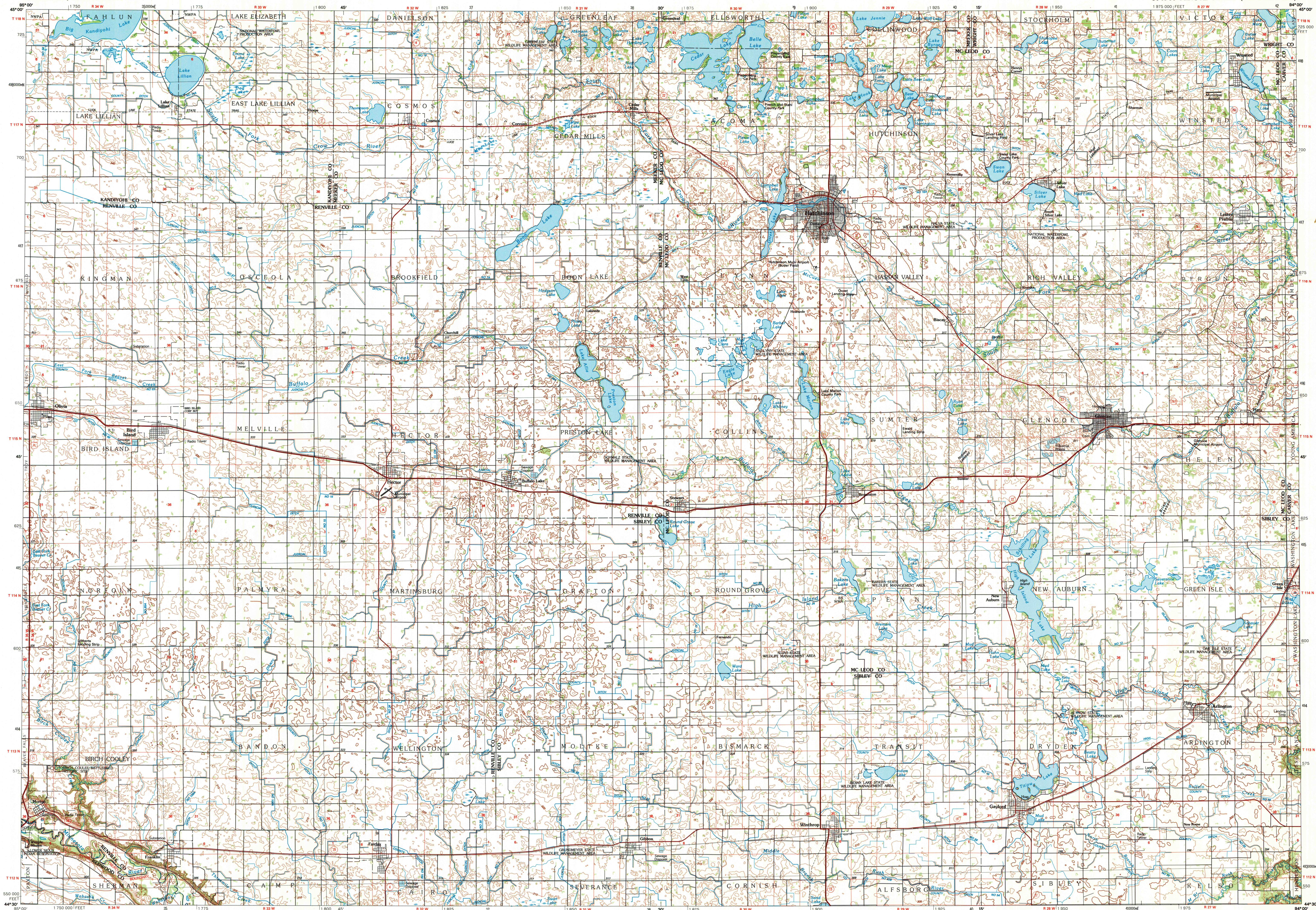
A pamphlet describing topographic maps is available on request

3006-7/8.00

SET

## GLENCOE, MINNESOTA

30 X 60 MINUTE SERIES (TOPOGRAPHIC)



INTERIOR—GEOLOGICAL SURVEY, RESTON, VIRGINIA—1981

SCALE 1:100 000

1 CENTIMETER ON THE MAP REPRESENTS 1 KILOMETER ON THE GROUND

CONTOUR INTERVAL 5 METERS

GLENCOE, MINNESOTA

44094-E1-TM-100

1986

U.S. Regional  
Depository Copy  
DO NOT DISCARD  
ARTHUR H. ROBINSON MAP LIBRARY  
University of Wisconsin-Madison