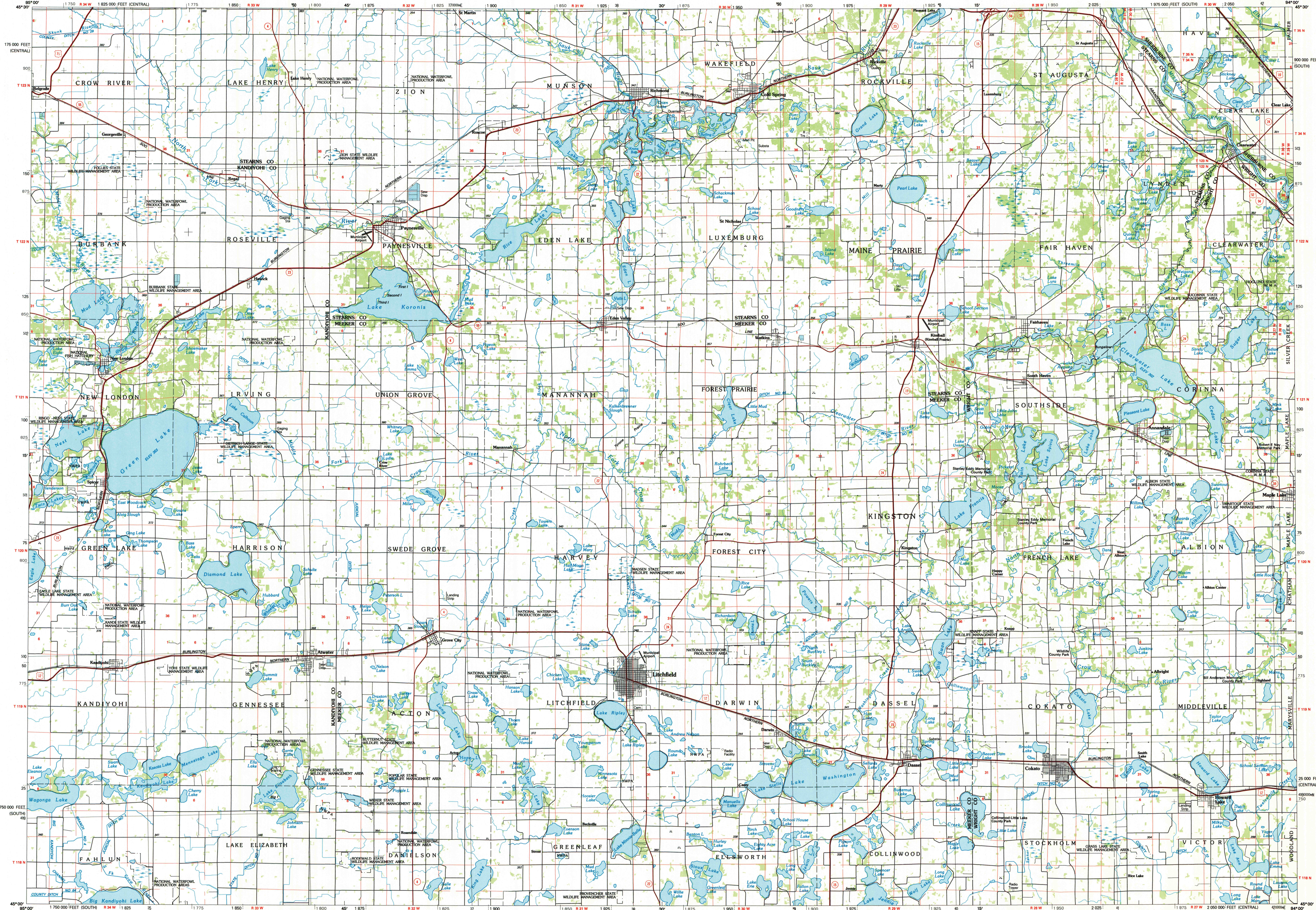


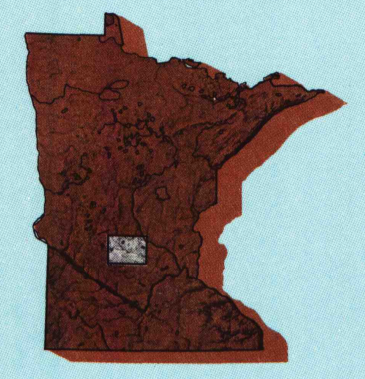
LITCHFIELD, MINNESOTA

30 X 60 MINUTE SERIES (PLANIMETRIC)



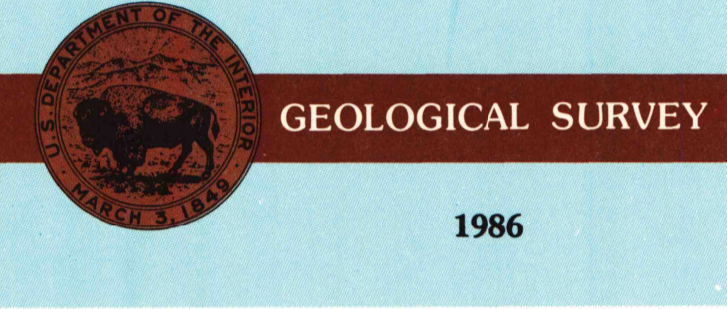
Litchfield MINNESOTA

1:100 000-scale planimetric map



30 X 60 MINUTE QUADRANGLE SHOWING

- Elevations in meters
- Highways, roads and other manmade structures
- Water features
- Woodland areas
- Geographic names



Produced by the United States Geological Survey
 Compiled from USGS 1:24 000-scale topographic maps dated 1963-1983. Planimetry revised from aerial photographs taken 1964, 1985 and other source data. Revised information not field checked. Map edited 1986
 Projection and 10 000-meter grid, zone 15, Universal Transverse Mercator
 25 000-foot grid ticks based on Minnesota coordinate system, south and central zones
 1987 North American Datum
 To place on the predicted North American Datum 1983, move the projection lines 7 meters north and 21 meters east
 There may be private inholdings within the boundaries of the National or State reservations shown on this map

NATIONAL GEODETIC VERTICAL DATUM OF 1929 ELEVATIONS SHOWN TO THE NEAREST METER

THIS MAP COMPLIES WITH NATIONAL MAP ACCURACY STANDARDS

CONVERSION TABLE		DECLINATION DIAGRAM		ADJOINING MAPS		
Meters	Feet	MAGNETIC		1	2	3
1	3.2808	1986		4	5	
2	6.5617	1985		6	7	8
3	9.8425	1984				
4	13.1234	1983				
5	16.4042	1982				
6	19.6850	1981				
7	22.9658	1980				
8	26.2467	1979				
9	29.5275	1978				
10	32.8084	1977				

To convert meters to feet multiply by 3.2808
 To convert feet to meters multiply by 0.3048

UTM grid convergence (GM) and false meridian deviation (FM) at center of map Diagram is approximate

FOR SALE BY U. S. GEOLOGICAL SURVEY
 RESTON, VIRGINIA 22092

U. S. Regional Depository Copy DO NOT DISCARD

Topographic Map Symbols

- Primary highway, hard surface
- Secondary highway, hard surface
- Light duty road, principal street, hard or improved surface
- Other road or street, trail
- Roads marker: interstate, U.S. State
- Railroad: standard gauge, narrow gauge
- Bridges: overpass, underpass
- Tunnel: road, railroad
- Built up area, locality, elevation
- Airport: landing field, landing strip
- National boundary
- State boundary
- County boundary
- National or State reservation boundary
- Land grant boundary
- U.S. public lands survey: range, township, section
- Range, township, section line: protracted
- Power transmission line, pipeline
- Dike: dam with lock
- Cemetery: building
- Windmill; water well; spring
- Mine shaft: adit or cave; mine, quarry; gravel pit
- Campground; picnic area; U.S. location monument
- Ruin; cliff dwelling
- Disturbed surface: strip mine, levee, sand
- Contours: index; intermediate; supplementary
- Bathymetric contours: index; intermediate
- Stream, lake: perennial; intermittent
- Rapids, large and small; falls, large and small
- Area to be submerged; marsh, swamp
- Land subject to converted inundation, woodland
- Scrub, mangrove
- Orchard; vineyard

A pamphlet describing topographic maps is available on request

SCALE 1:100 000
 1 CENTIMETER ON THE MAP REPRESENTS 1 KILOMETER ON THE GROUND

INTERIOR - GEOLOGICAL SURVEY, RESTON, VIRGINIA - 1986

LITCHFIELD, MINNESOTA
 45094-A1-PL-100