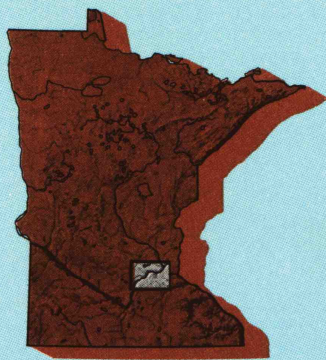


Saint Paul
MINNESOTA

1:100 000-scale
planimetric map



30 X 60 MINUTE QUADRANGLE
SHOWING

- Elevations in meters
- Highways, roads and other manmade structures
- Water features
- Woodland areas
- Geographic names



GEOLOGICAL SURVEY

1985

Produced by the United States Geological Survey

Compiled from USGS 1:24 000-scale topographic maps dated 1958-1981. Planimetry revised from aerial photographs taken 1958 and other source data. Revised information not field checked. Map edited 1985

Projection and 10 000-meter grid, zone 15, Universal Transverse Mercator
25 000-foot grid ticks based on Minnesota coordinate system, south zone

1927 North American Datum
To place on the predicted North American Datum 1983, move the projection lines 7 meters north and 18 meters east

There may be private inholdings within the boundaries of the National or State reservations shown on this map

NATIONAL GEODETIC VERTICAL DATUM OF 1929

ELEVATIONS SHOWN TO THE NEAREST METER

THIS MAP COMPLIES WITH NATIONAL MAP ACCURACY STANDARDS

CONVERSION TABLE		DECLINATION DIAGRAM	ADJOINING MAPS		
Meters	Feet		1	2	3
1	3.2808		1	2	3
2	6.5617		4	5	6
3	9.8425		7	8	9
4	13.1234		10	11	12
5	16.4042		13	14	15
6	19.6850		16	17	18
7	22.9659		19	20	21
8	26.2467		22	23	24
9	29.5276		25	26	27
10	32.8084		28	29	30
To convert meters to feet multiply by 3.2808		UTM grid convergence (CM) and 1985 magnetic declination (MM) at center of map. Diagram is approximate	1 Litchfield 2 Anoka 3 Stillwater 4 Glenwood 5 Hastings 6 New Ulm 7 Fairbault 8 Rochester		
To convert feet to meters multiply by 0.3048					

FOR SALE BY U.S. GEOLOGICAL SURVEY
RESTON, VIRGINIA 22092

USGS NMD HISTORICAL MAP

APR 23 1986

REC'D FILE COPY

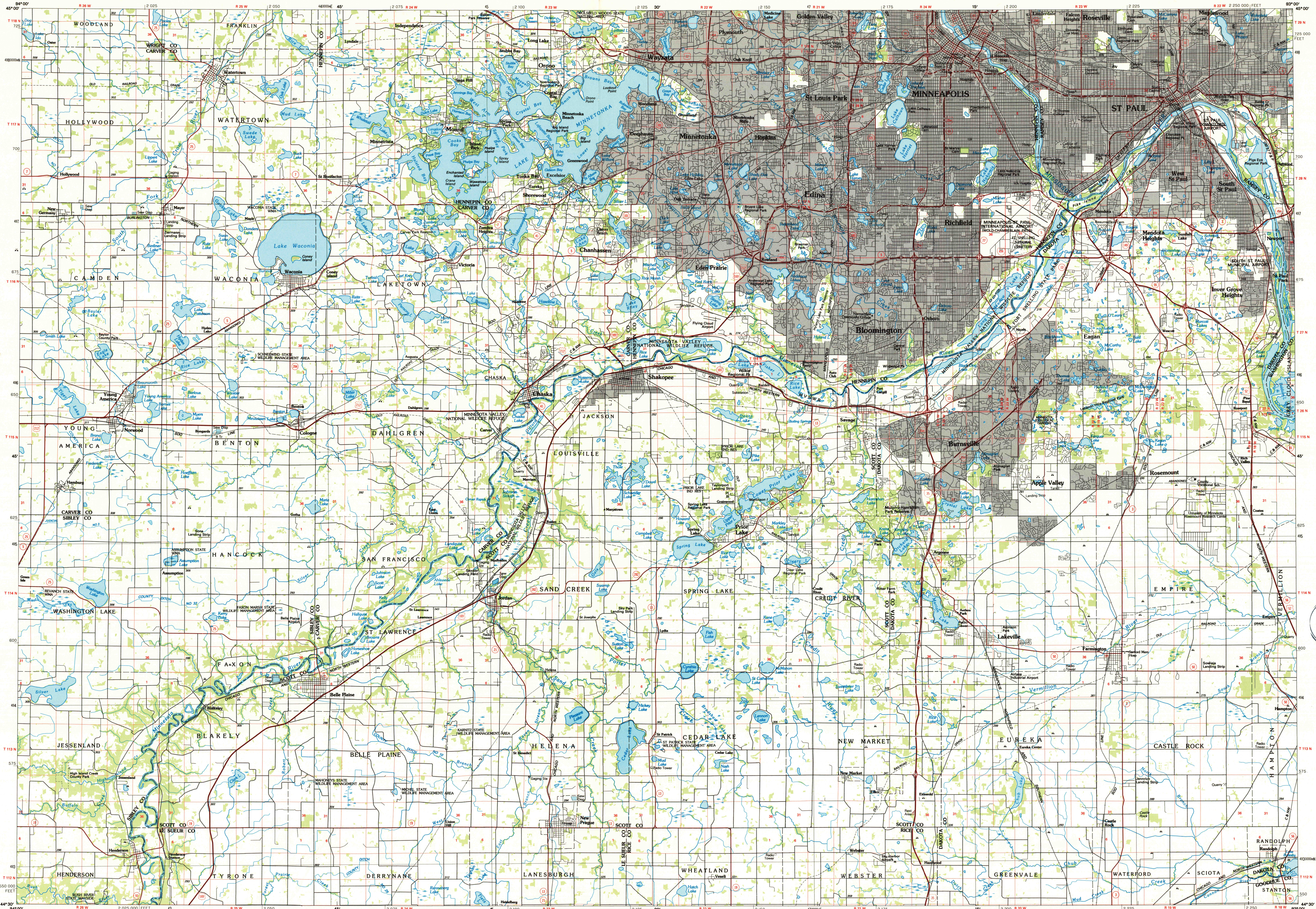
Topographic Map Symbols

Primary highway, hard surface	Secondary highway, hard surface	Light duty road, principal street, hard or improved surface	Other road or street, trail	Route marker: Interstate, U.S., State	Railroad: standard gage, narrow gage	Bridge: overpass, underpass	Tunnel: road, railroad	Built up area, locality, elevation	Airport: landing field, landing strip	National boundary	State boundary	County boundary	National or State reservation boundary	Land grant boundary	U.S. public lands survey: range, township, section	Range, township, section line: projected	Power transmission line: pipeline	Dam: dam with lock	Cemetery: building	Windmill: water well, spring	Mine shaft, adit or cave, mine, quarry, gravel pit	Campground, picnic area, U.S. location monument	Ruins: cliff dwelling	Distorted surface: strip mine, lava, sand	Contours: index, intermediate, supplementary	Bathymetric contours: index, intermediate	Stream, lake, perennial, intermittent	Rapids, large and small; falls, large and small	Area to be submerged; marsh, swamp	Land subject to controlled inundation; woodland	Scrub; mangrove	Orchard; vineyard
-------------------------------	---------------------------------	---	-----------------------------	---------------------------------------	--------------------------------------	-----------------------------	------------------------	------------------------------------	---------------------------------------	-------------------	----------------	-----------------	--	---------------------	--	--	-----------------------------------	--------------------	--------------------	------------------------------	--	---	-----------------------	---	--	---	---------------------------------------	---	------------------------------------	---	-----------------	-------------------

A pamphlet describing topographic maps is available on request

SAINT PAUL, MINNESOTA

30 X 60 MINUTE SERIES (PLANIMETRIC)



INTERIOR-GEOLOGICAL SURVEY, RESTON, VIRGINIA-1985

KILOMETERS 1 0 1 2 3 4 5 6 7 8 9 10 11 12 13 14 15 16 17 18 19 20

MILES 1 0 1 2 3 4 5 6 7 8 9 10 11 12 13 14 15 16 17 18 19 20

SCALE 1:100 000

1 CENTIMETER ON THE MAP REPRESENTS 1 KILOMETER ON THE GROUND

1000 0 5000 10000 15000 20000 25000 30000 35000 40000 45000 50000 55000 60000 65000 70000 FEET

SAINT PAUL, MINNESOTA

44093-E1-PL-100

1985