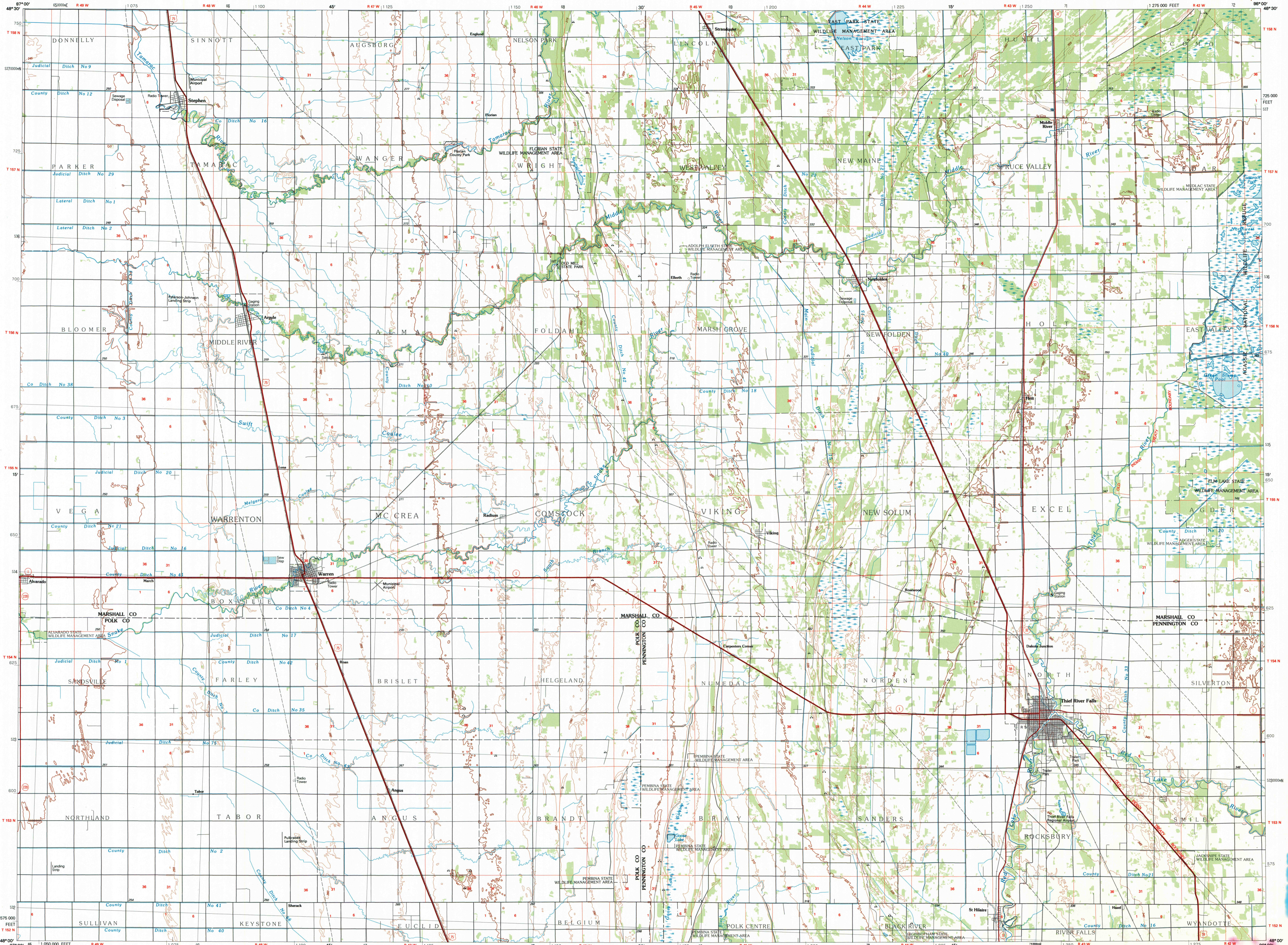


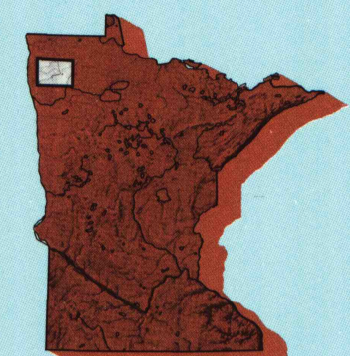
THIEF RIVER FALLS, MINNESOTA

30 X 60 MINUTE SERIES (TOPOGRAPHIC)



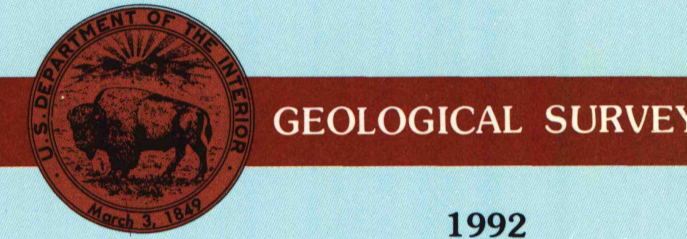
Thief River Falls MINNESOTA

1:100 000-scale metric topographic map



30 X 60 MINUTE QUADRANGLE SHOWING

- Contours and elevations in meters
- Highways, roads and other manmade structures
- Water features
- Woodland areas
- Geographic names



1992

Produced by the United States Geological Survey  
 Compiled from USGS 1:24 000-scale topographic maps dated 1959-1982. Planimetry revised from aerial photographs taken 1988 and other source data. Revised information not field checked. Map edited 1992  
 Projection and 10 000-meter grid, zone 14 Universal Transverse Mercator  
 25 000-foot grid ticks based on Minnesota coordinate system, north zone 1927 North American Datum  
 To place on the predicted North American Datum 1983, move the projection lines 5 meters north and 23 meters east  
 There may be private inholdings within the boundaries of the National or State reservations shown on this map

CONTOUR INTERVAL 5 METERS  
 NATIONAL GEODETIC VERTICAL DATUM OF 1929  
 ELEVATIONS SHOWN TO THE NEAREST METER

THIS MAP COMPLIES WITH NATIONAL MAP ACCURACY STANDARDS

Meters	Feet	DECLINATION DIAGRAM	ADJOINING MAPS
1	3.2808		1 Cassler
2	6.5617		2 Hallock
3	9.8425		3 Roseau
4	13.1234		4 Gradson
5	16.4042		5 Grygala
6	19.6850		6 Grand Forks
7	22.9659		7 Crookston
8	26.2467		8 Fosston
9	29.5275		
10	32.8084		

To convert meters to feet multiply by 3.2808  
 To convert feet to meters multiply by 0.3048  
 UTM grid convergence (IGN and 1983 magnetic declination (MN) at center of map. Diagram is approximate

FOR SALE BY U.S. GEOLOGICAL SURVEY  
 DENVER, COLORADO 80225, OR RESTON, VIRGINIA 22092

Topographic Map Symbols

- Primary highway, hard surface
- Secondary highway, hard surface
- Light duty road, principal street, hard or improved surface
- Other road or street; trail
- Route marker: Interstate, U.S., State
- Railroad: standard gage; narrow gage
- Bridge; overpass; underpass
- Tunnel: road; railroad
- Bath: area; locality; elevation
- Airport; landing field; landing strip
- National boundary
- State boundary
- County boundary
- National or State reservation boundary
- Land grant boundary
- U.S. public lands survey; range, township; section
- Range, township, section line; grouted
- Power transmission line; pipeline
- Dam; dam with lock
- Cemetery; building
- Windmill; water well; spring
- Mine shaft; adit or cave; mine, quarry; gravel pit
- Campground; picnic area; U.S. location monument
- Railroad; water tower; elevation
- Disturbed surface: strip mine, lava, sand
- Contours: index; intermediate; supplementary
- Bathymetric contours: index; intermediate
- Stream, lake: perennial; intermittent
- Rapids; large and small; falls, large and small
- Area to be submerged; marsh, swamps
- Land subject to controlled inundation; woodland
- Soak; mangrove
- Orchard; vineyard

A pamphlet describing topographic maps is available on request

SET  
 2006-9/18.02  
 ARTHUR H. ROBINSON MAP LIBRARY  
 University of Wisconsin-Madison