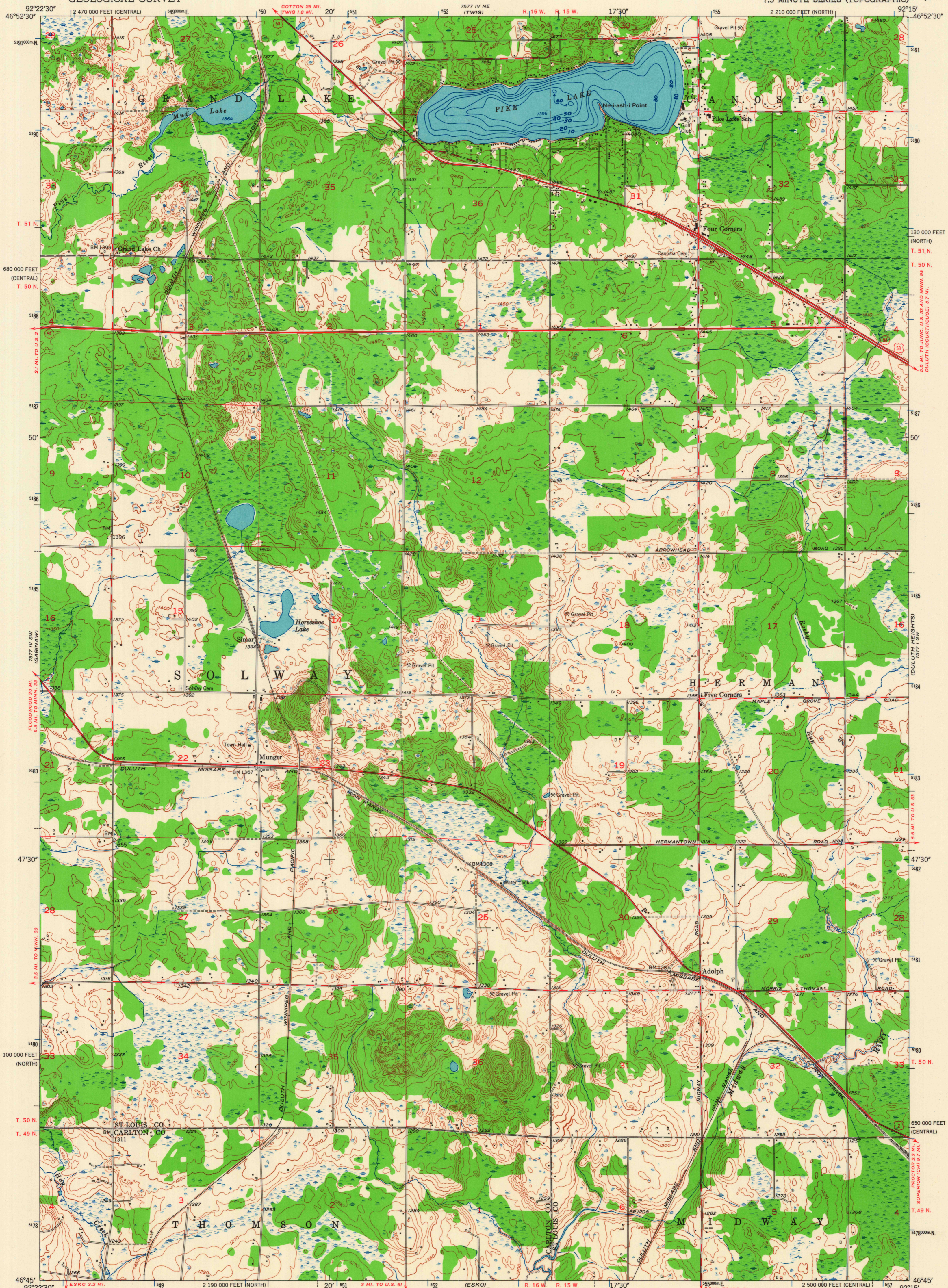


UNITED STATES
DEPARTMENT OF THE INTERIOR
GEOLOGICAL SURVEY

ADOLPH QUADRANGLE
MINNESOTA
7.5 MINUTE SERIES (TOPOGRAPHIC)



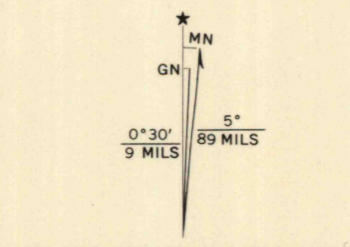
Mapped, edited, and published by the Geological Survey

Control by USGS and USC&GS

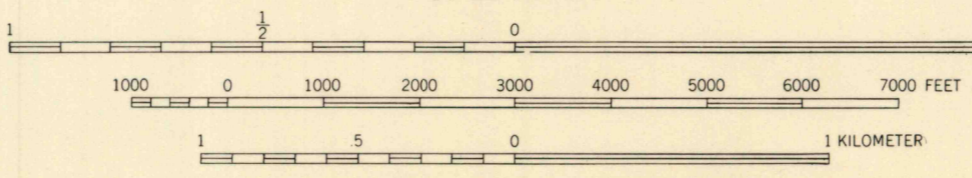
Topography from aerial photographs by Kesh plotter
Aerial photographs taken 1952. Field check 1953

Depth curves compiled from charts furnished by Minnesota Department of Conservation

Polyconic projection. 1927 North American datum
10,000-foot grids based on Minnesota coordinate system,
north and central zones
1000-meter Universal Transverse Mercator grid ticks,
zone 15, shown in blue

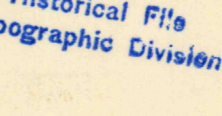


SCALE 1:24,000



CONTOUR INTERVAL 10 FEET
DATUM IS MEAN SEA LEVEL

USGS
Historical File
Topographic Division



QUADRANGLE LOCATION

ROAD CLASSIFICATION	
Heavy-duty	4 LANE 6 LANE Light-duty
Medium-duty	4 LANE 6 LANE Unimproved dirt
U.S. Route	State Route

THIS MAP COMPLIES WITH NATIONAL MAP ACCURACY STANDARDS
FOR SALE BY U.S. GEOLOGICAL SURVEY, DENVER 25, COLORADO OR WASHINGTON 25, D. C.
A FOLDER DESCRIBING TOPOGRAPHIC MAPS SYMBOLS IS AVAILABLE ON REQUEST

ADOLPH, MINN.
N4645-W9215/7.5

1953

AMS 7577 IV SE-SERIES V872

U.S.G.S. 2220
FILE COPY FEB 3 1965
TOPOGRAPHIC DIVISION