

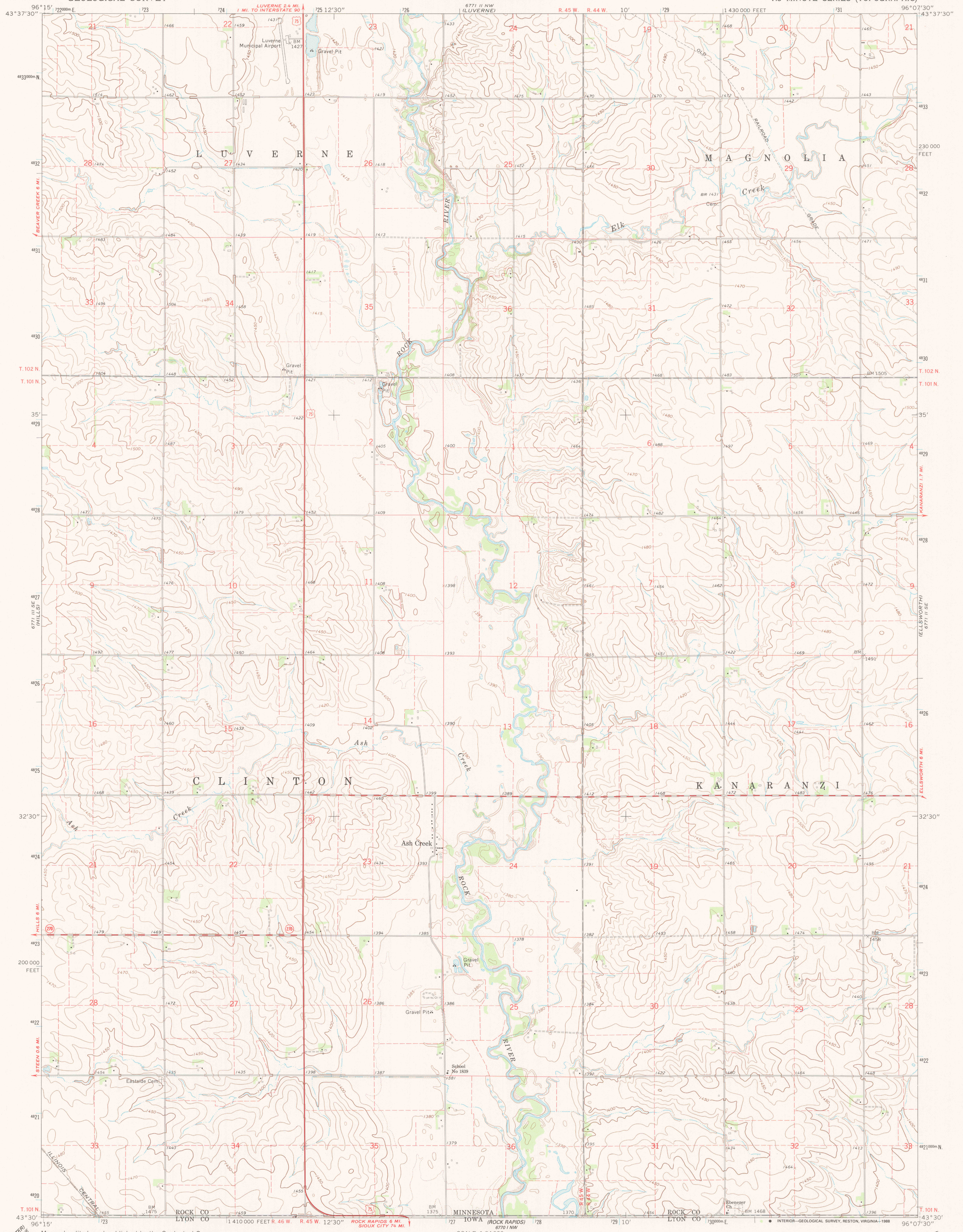
671 H NE  
HILLS NE

UNITED STATES  
DEPARTMENT OF THE INTERIOR  
GEOLOGICAL SURVEY

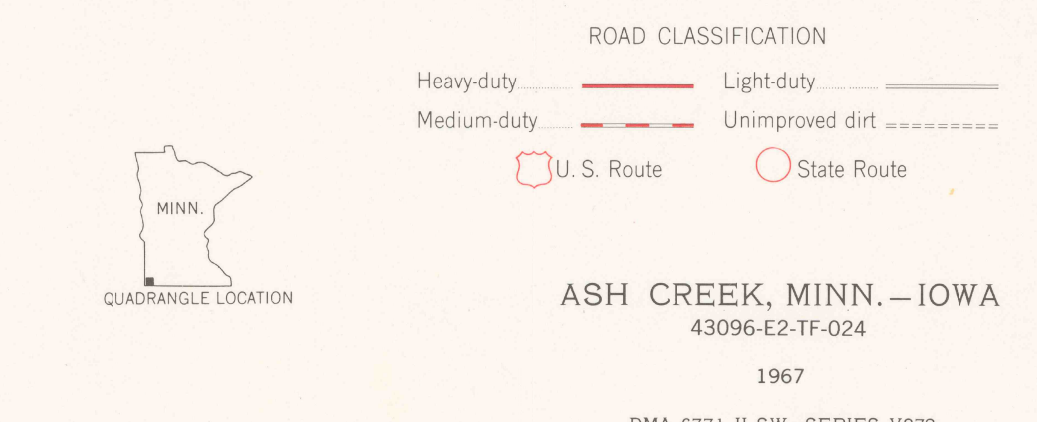
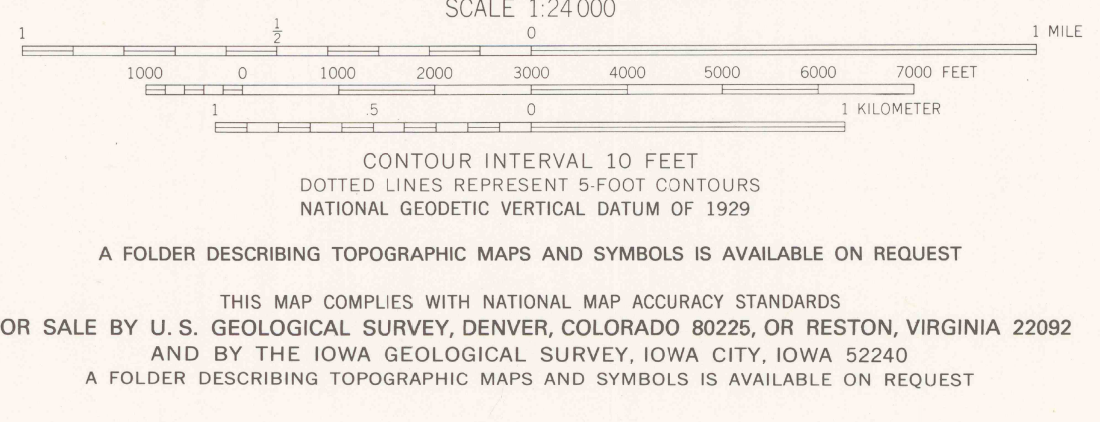
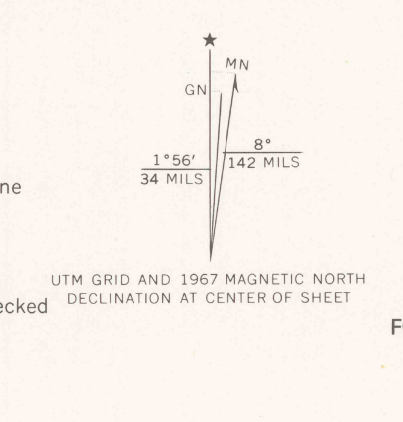
STATE OF MINNESOTA  
DEPARTMENT OF ADMINISTRATION

ASH CREEK QUADRANGLE  
MINNESOTA-IOWA  
7.5 MINUTE SERIES (TOPOGRAPHIC)

671 H NE  
MAGNOLIA



Mapped, edited, and published by the Geological Survey  
Control by USGS and USC&GS  
Topography by photogrammetric methods from aerial photographs taken 1965. Field checked 1967  
Polyconic projection. 1927 North American datum  
10,000-foot grid based on Minnesota coordinate system, south zone  
1000-meter Universal Transverse Mercator grid ticks, zone 14, shown in blue  
Fine red dashed lines indicate selected fence and field lines where generally visible on aerial photographs. This information is unchecked  
To place on the predicted North American Datum 1983, move the projection lines 7 meters north and 25 meters east as shown by dashed corner ticks



USGS MINN. HISTORICAL MAP  
NOV 22 1988  
REC'D FILE COPY