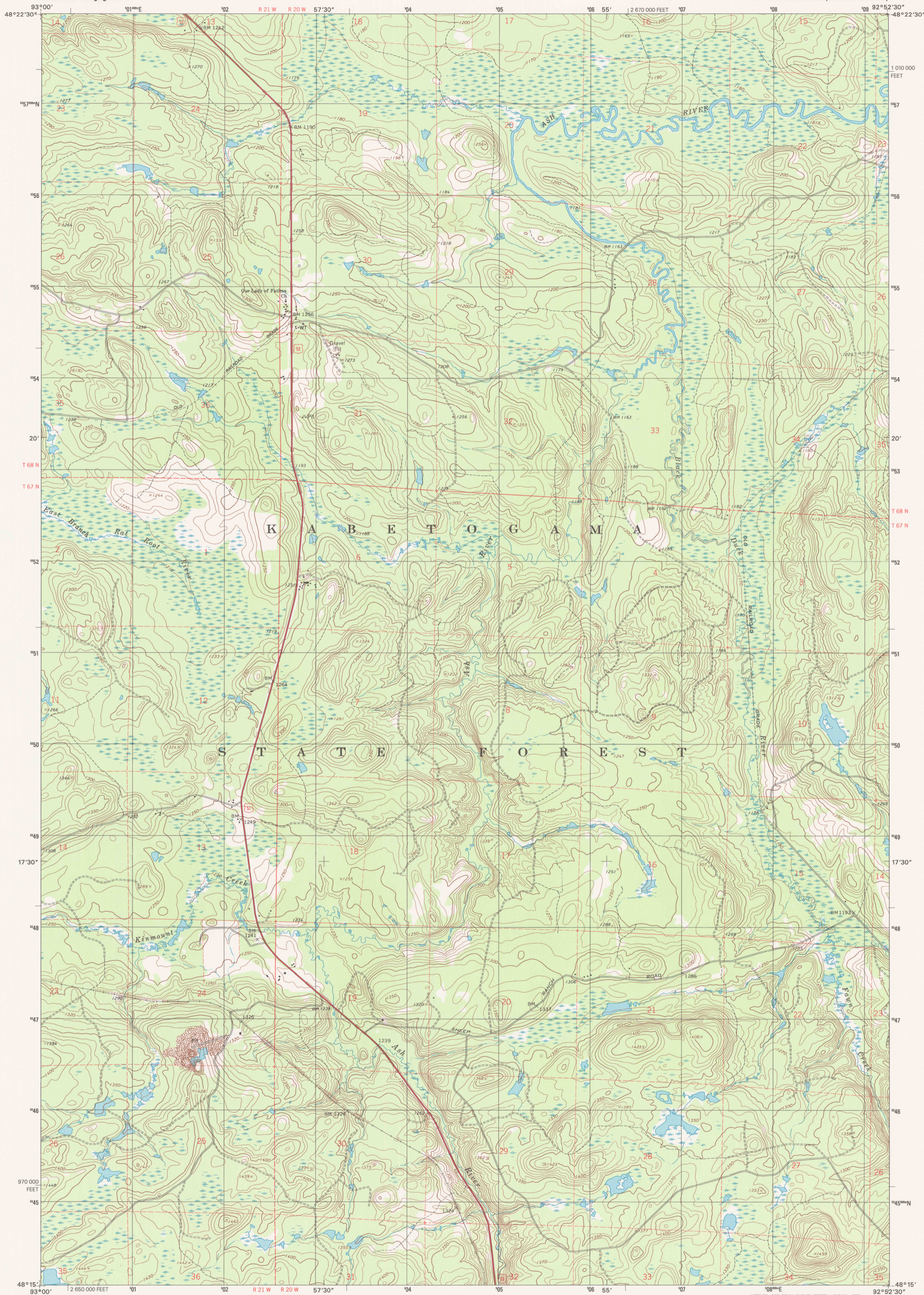


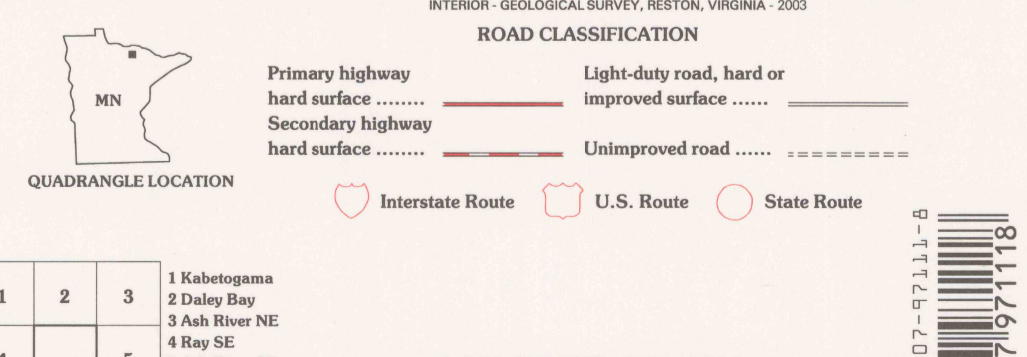
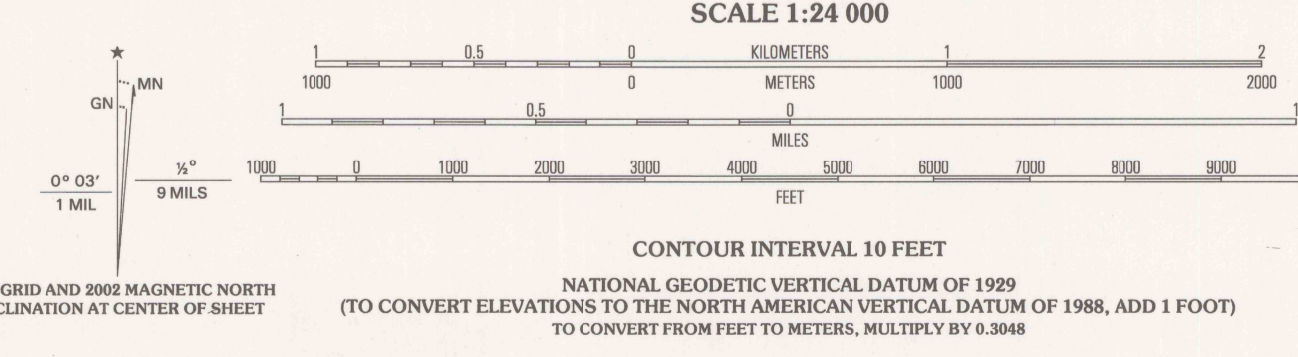


U.S. DEPARTMENT OF THE INTERIOR
U.S. GEOLOGICAL SURVEY

ASH RIVER SW QUADRANGLE
MINNESOTA-ST. LOUIS CO.
7.5-MINUTE SERIES (TOPOGRAPHIC)



Produced by the United States Geological Survey
Topography compiled 1966. Planimetry derived from imagery taken 1999 and other sources. Public Land Survey System and survey control current as of 1968. Boundaries current as of 2002
North American Datum of 1983 (NAD 83). Projection and 1 000-meter grid: Universal Transverse Mercator, zone 15
10 000-foot ticks: Minnesota Coordinate System of 1983 (north zone)
North American Datum of 1927 (NAD 27) is shown by dashed corner ticks. The values of the shift between NAD 83 and NAD 27 for 7.5-minute intersections are obtainable from National Geodetic Survey NADCON software
There may be private holdings within the boundaries of the National or State reservations shown on this map
Houses of worship, schools, and other labeled buildings verified 1968



1	2	3	1 Kabetogama
2	3	4	2 Dalry Bay
3	4	5	3 Ash River NE
4	5	6	4 Res SE
5	6	7	5 Ash River SE
6	7	8	6 Nett Lake NE
7	8		7 Ash Lake
8			8 Ovi NE

ASH RIVER SW, MN
1999
NIMA 7480 IV SW-SERIES V872

US GEOLOGICAL SURVEY
LIBRARY
JUN 09 2003
RESTON, VA



THIS MAP COMPLIES WITH NATIONAL MAP ACCURACY STANDARDS
FOR SALE BY U.S. GEOLOGICAL SURVEY, P.O. BOX 25286, DENVER, COLORADO 80225
A FOLDER DESCRIBING TOPOGRAPHIC MAPS AND SYMBOLS IS AVAILABLE ON REQUEST