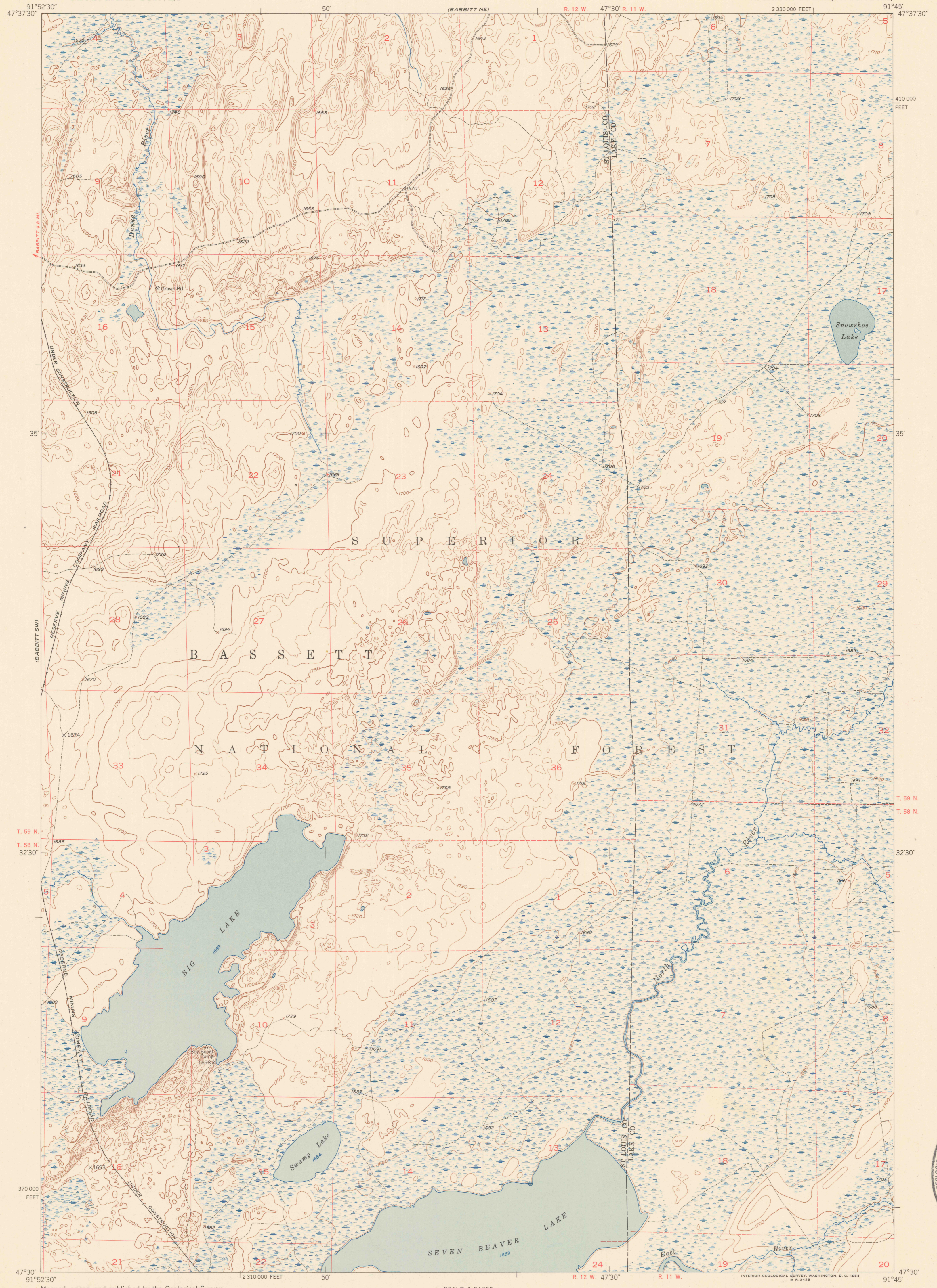


(BABBITT)

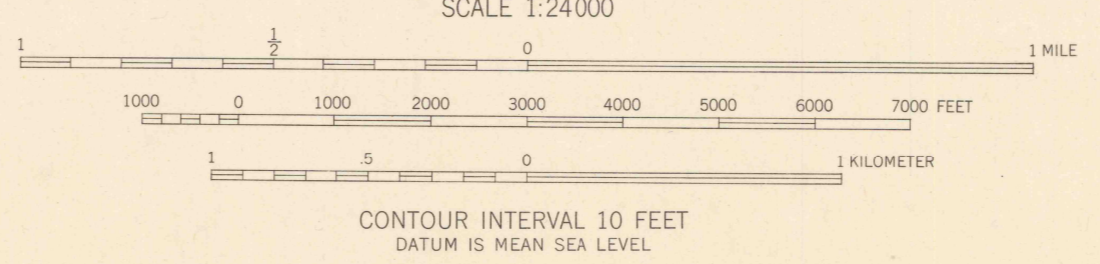
UNITED STATES
DEPARTMENT OF THE INTERIOR
GEOLOGICAL SURVEY

BABBITT SE QUADRANGLE
MINNESOTA
7.5 MINUTE SERIES (TOPOGRAPHIC)



Mapped, edited, and published by the Geological Survey
Control by USGS and USC&GS
Topography from aerial photographs by Kesh plotter
Aerial photographs taken 1947. Field check 1952
Polyconic projection, 1927 North American datum
10,000-foot grid based on Minnesota coordinate system,
north zone
Dashed land lines indicate approximate locations

TRUE NORTH
MAGNETIC NORTH
APPROXIMATE MEAN
DECLINATION, 1952



ROAD CLASSIFICATION
Heavy-duty 4 LANE ROAD Light-duty
Medium-duty 2 LANE ROAD Unimproved dirt
U. S. Route State Route



BABBITT SE, MINN.
N4730-W9145/7.5
1952

THIS MAP COMPLIES WITH NATIONAL MAP ACCURACY STANDARDS
FOR SALE BY U. S. GEOLOGICAL SURVEY, FEDERAL CENTER, DENVER, COLORADO OR WASHINGTON 25, D. C.
A FOLDER DESCRIBING TOPOGRAPHIC MAPS AND SYMBOLS IS AVAILABLE ON REQUEST

