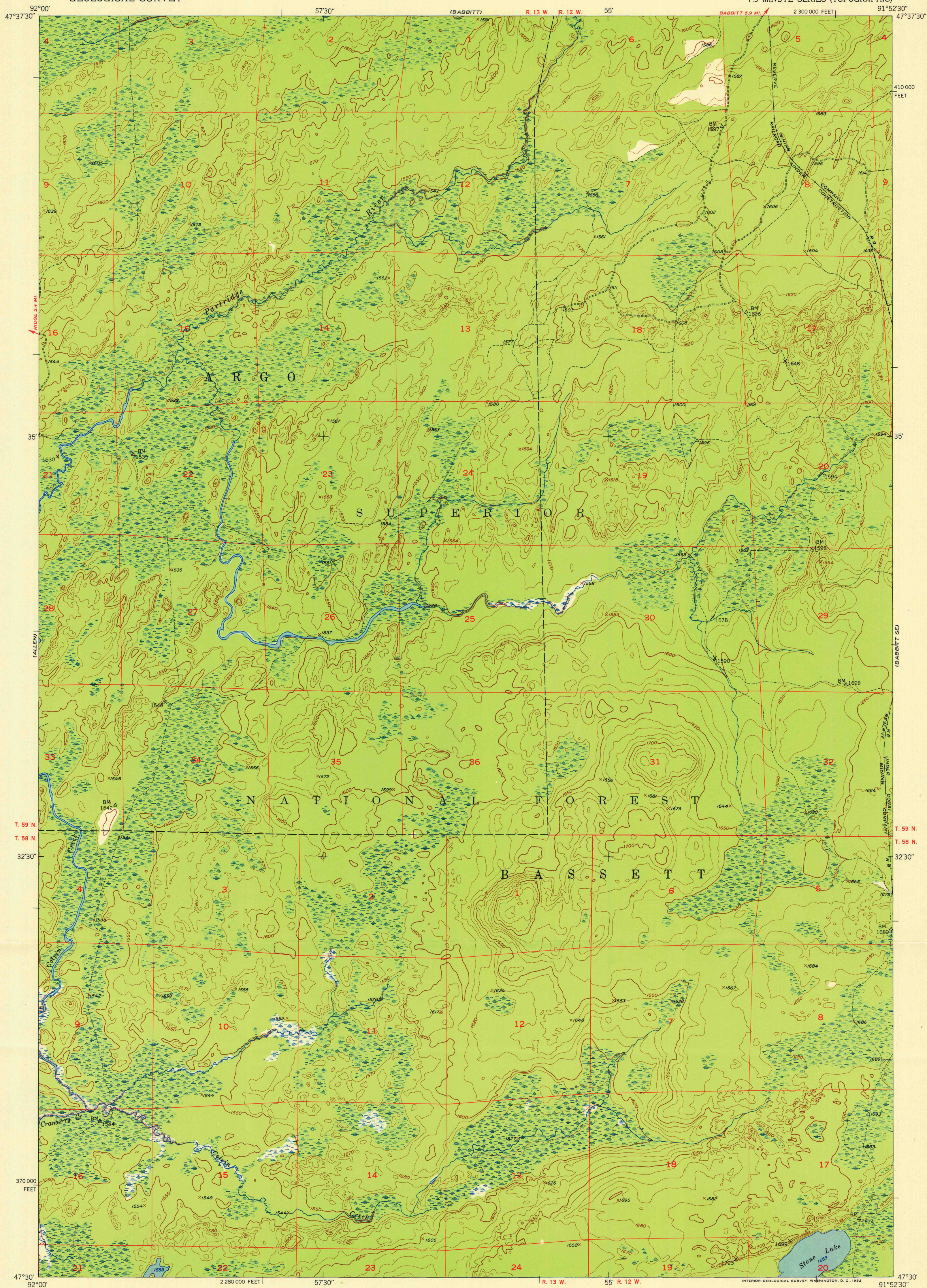


ISAC LANE

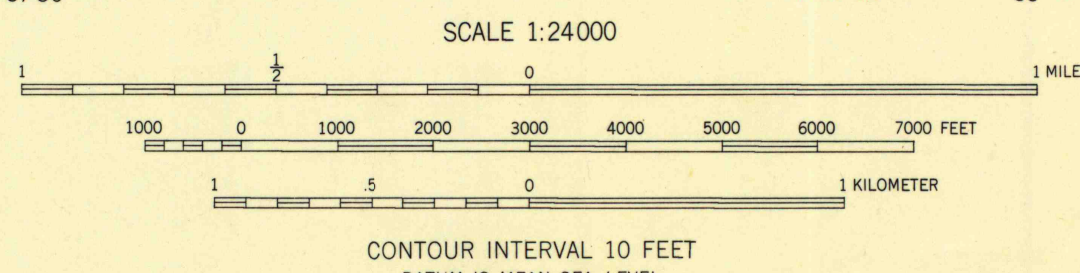
UNITED STATES  
DEPARTMENT OF THE INTERIOR  
GEOLOGICAL SURVEY

BABBITT SW QUADRANGLE  
MINNESOTA-ST. LOUIS CO.  
7.5 MINUTE SERIES (TOPOGRAPHIC)



Mapped, edited, and published by the Geological Survey  
Control by USGS and USC&GS  
Topography from aerial photographs by multiplex methods  
Aerial photographs taken 1947. Field check 1951  
Polyconic projection. 1927 North American datum  
10,000-foot grid based on Minnesota coordinate system,  
north zone  
Dashed land lines indicate approximate locations  
Unchecked elevations are shown in brown

TRUE NORTH  
MAGNETIC NORTH  
APPROXIMATE MEAN  
DECLINATION, 1951



ROAD CLASSIFICATION  
Heavy-duty ———— \*LANE 16 LANE Light-duty ————  
Medium-duty ———— \*LANE 16 LANE Unimproved dirt ————  
U. S. Route ———— State Route ————

BABBITT SW. MINN.  
N4730-W9152.5/7.5  
1951

UNIVERSITY OF MINNESOTA  
Department of Geography

THIS MAP COMPLIES WITH NATIONAL MAP ACCURACY STANDARDS  
FOR SALE BY U. S. GEOLOGICAL SURVEY, FEDERAL CENTER, DENVER, COLORADO OR WASHINGTON 25, D. C.  
A FOLDER DESCRIBING TOPOGRAPHIC MAPS AND SYMBOLS IS AVAILABLE ON REQUEST