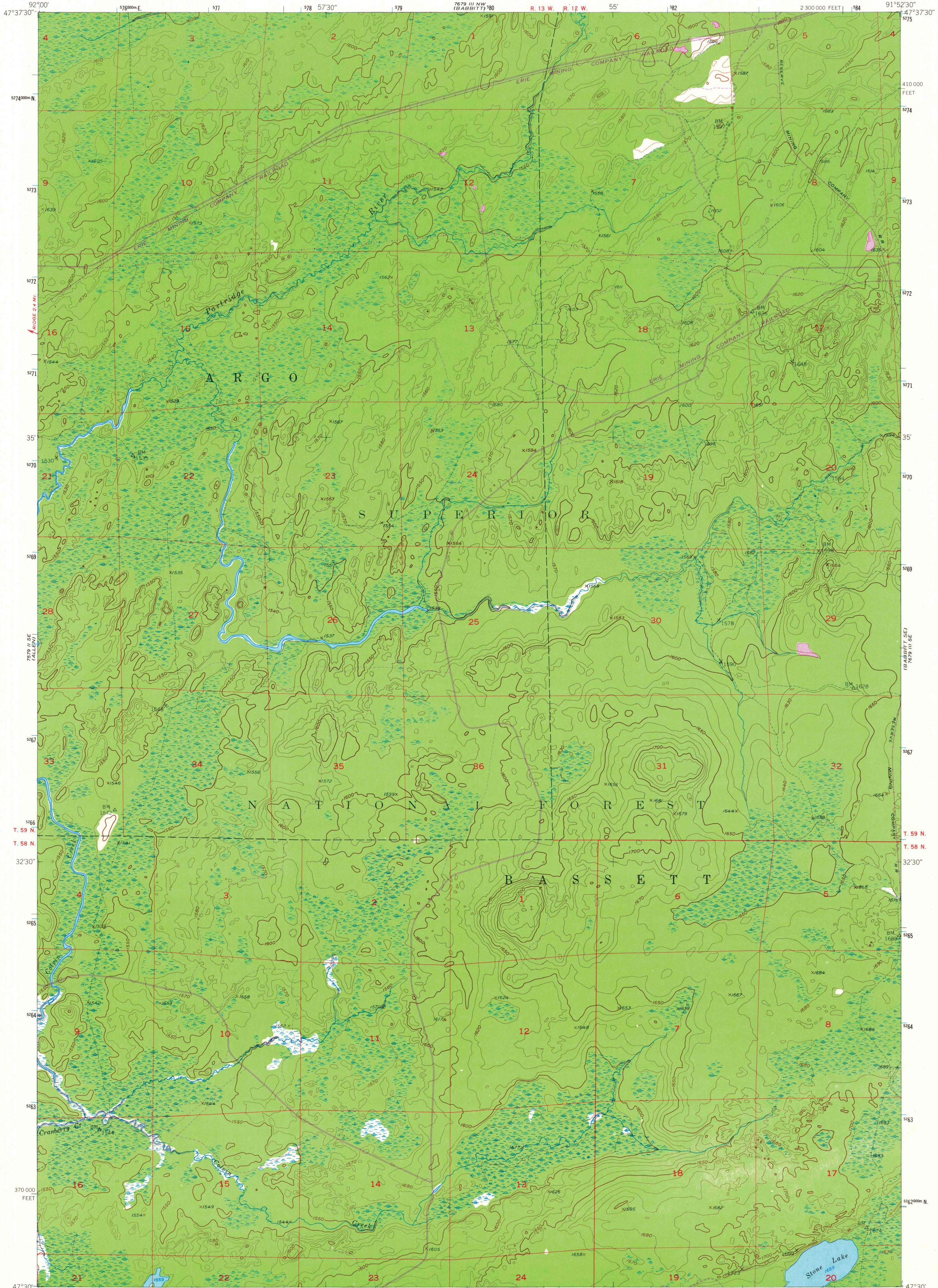


UNITED STATES  
DEPARTMENT OF THE INTERIOR  
GEOLOGICAL SURVEY

BABBITT SW QUADRANGLE  
MINNESOTA-ST. LOUIS CO.  
7.5 MINUTE SERIES (TOPOGRAPHIC)



Mapped, edited, and published by the Geological Survey

Control by USGS and USC&GS

Topography from aerial photographs by multiplex methods  
Aerial photographs taken 1947. Field check 1951

Polyconic projection. 1927 North American datum  
10,000-foot grid based on Minnesota coordinate system,  
north zone

Dashed land lines indicate approximate locations

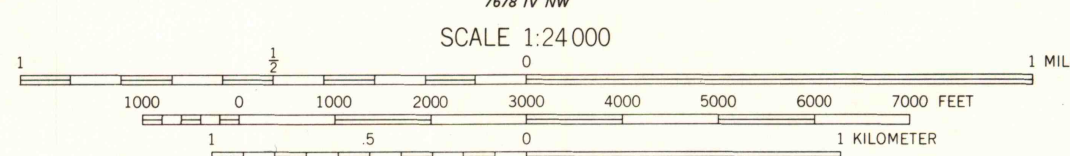
Unchecked elevations are shown in brown

1000-meter Universal Transverse Mercator grid tick  
zone 15, shown in blue

Revisions shown in purple compiled in cooperation with the  
Iron Range Resources and Rehabilitation Commission from  
aerial photographs taken 1969. This information not field checked

UTM GRID AND 1969 MAGNETIC NORTH  
DECLINATION AT CENTER OF SHEET

There may be private inholdings within  
the boundaries of the National or  
State reservations shown on this map



CONTOUR INTERVAL 10 FEET  
NATIONAL GEODETIC VERTICAL DATUM OF 1929

THIS MAP COMPLIES WITH NATIONAL MAP ACCURACY STANDARDS  
FOR SALE BY U. S. GEOLOGICAL SURVEY, DENVER, COLORADO 80225, OR RESTON, VIRGINIA 22092  
A FOLDER DESCRIBING TOPOGRAPHIC MAPS AND SYMBOLS IS AVAILABLE ON REQUEST

To place on the predicted North American Datum 1983  
move the projection lines 6 meters north and  
13 meters east as shown by dashed corner ticks

ROAD CLASSIFICATION

Light-duty ————— Unimproved dirt —————



QUADRANGLE LOCATION

BABBITT SW, MINN.  
N4730-W9152.5/7.5

1951  
PHOTOREVISED 1969  
AMS 7679 III SW-SERIES V872

DEC 14 1981

2700