

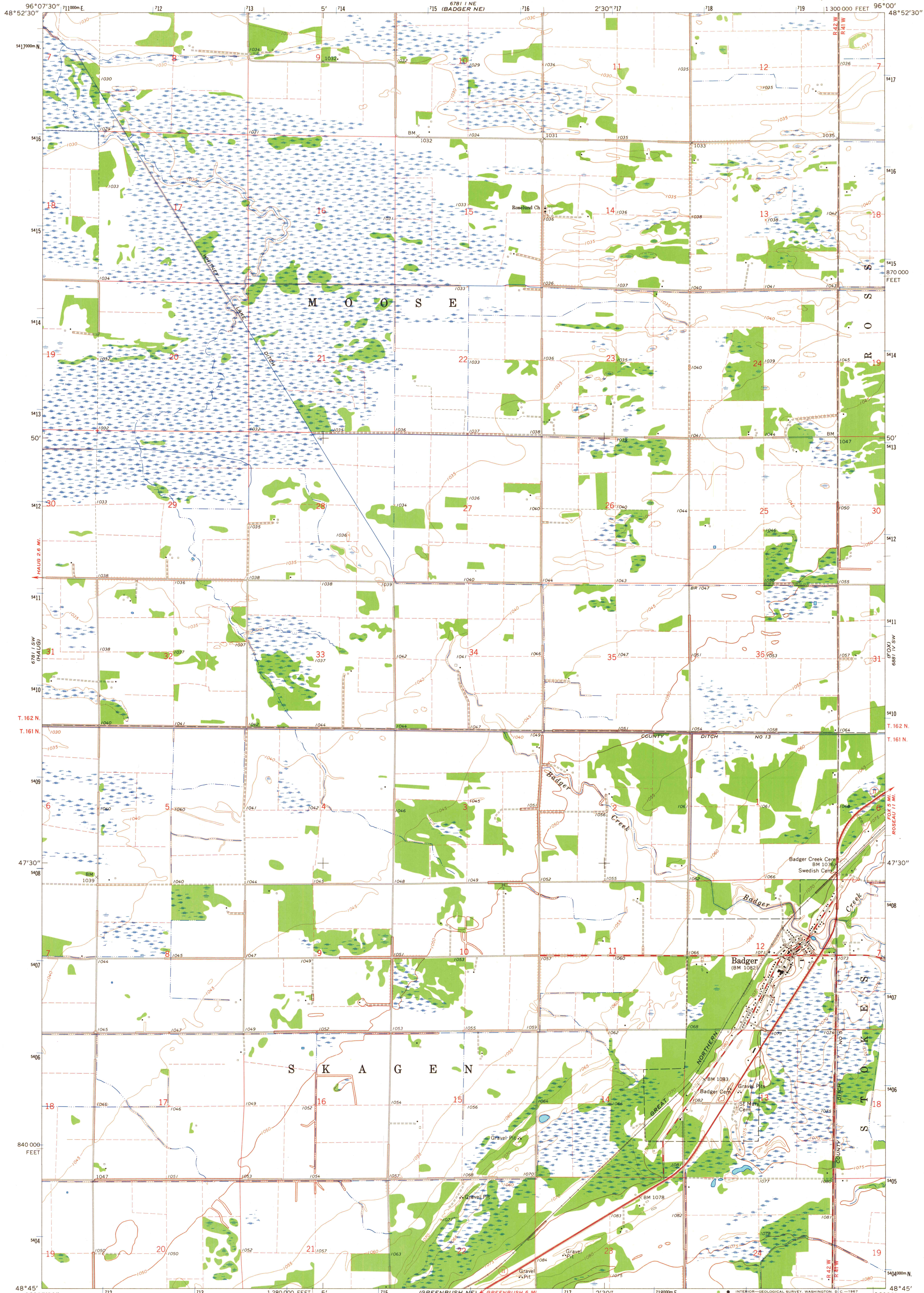
6781 NW
(BADGER NW)

UNITED STATES
DEPARTMENT OF THE INTERIOR
GEOLOGICAL SURVEY

STATE OF MINNESOTA
DEPARTMENT OF ADMINISTRATION

BADGER QUADRANGLE
MINNESOTA-ROSEAU CO.
7.5 MINUTE SERIES (TOPOGRAPHIC)

6881 NW
(PINECREAK)



(GREENBUSH)
6781 NW

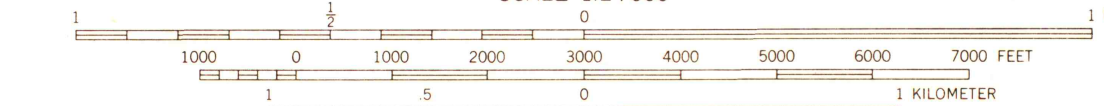
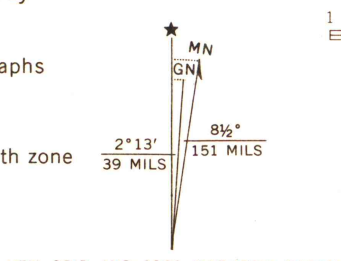
Mapped, edited, and published by the Geological Survey

Control by USGS and USC&GS

Planimetry by photogrammetric methods from aerial photographs taken 1965. Topography by planimetric surveys 1966

Polyconic projection. 1927 North American datum
10,000-foot grid based on Minnesota coordinate system, north zone
1000-meter Universal Transverse Mercator grid ticks,
zone 14, shown in blue

Fine red dashed lines indicate selected fence and field lines
where generally visible on aerial photographs
This information is unchecked



CONTOUR INTERVAL 5 FEET
DATUM IS MEAN SEA LEVEL

MAP AND AIR PHOTO LIBRARY
University of Wisconsin



ROAD CLASSIFICATION
Heavy-duty ——— Light-duty ———
Medium-duty ——— Unimproved dirt ———
State Route ———

BADGER, MINN.
N4845—W9600/7.5

1966

AMS 6781 1 SE—SERIES V872