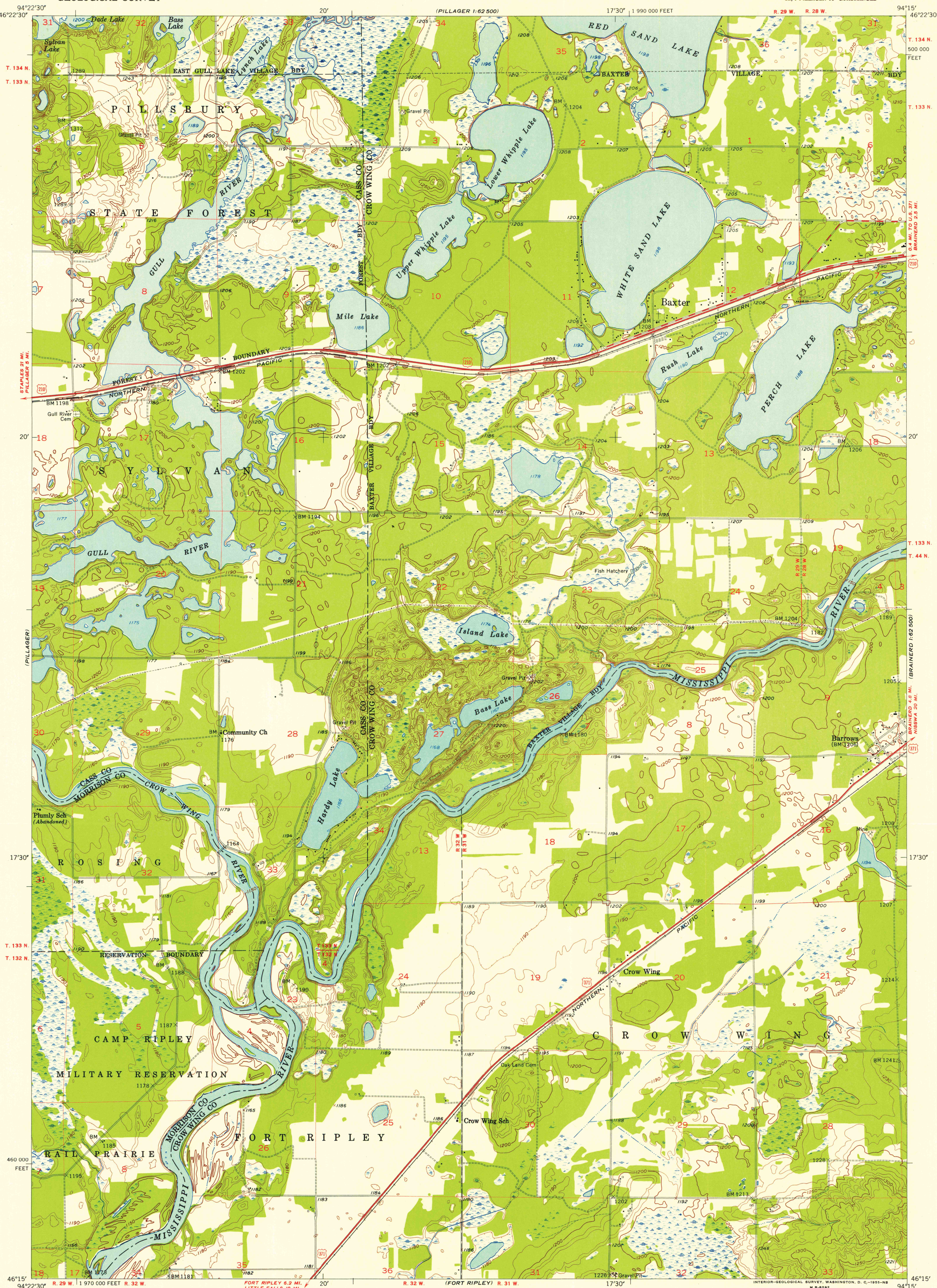
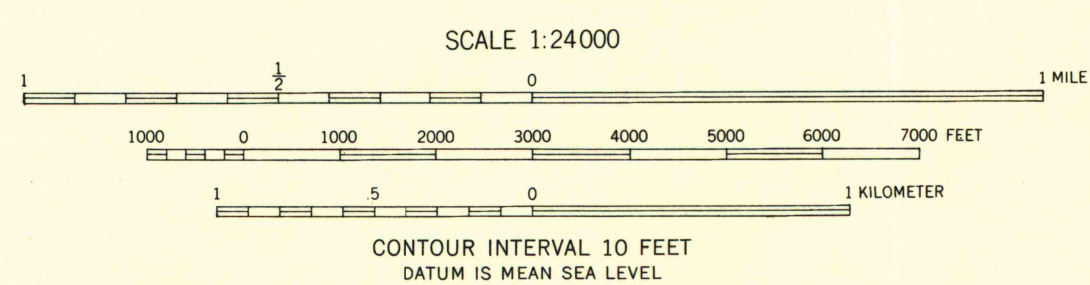


UNITED STATES
DEPARTMENT OF THE INTERIOR
GEOLOGICAL SURVEY

BAXTER QUADRANGLE
MINNESOTA
7.5 MINUTE SERIES (TOPOGRAPHIC)
SE/4 PILLAGER 15' QUADRANGLE



Mapped, edited and published by the Geological Survey
Control by USGS, USC&GS, and USCE
Topography from aerial photographs by photogrammetric methods
Aerial photographs taken 1954. Field check 1954
Polyconic projection. 1927 North American datum
10,000-foot grid based on Minnesota coordinate system,
central zone



ROAD CLASSIFICATION
Heavy-duty ——— Light-duty ———
Medium-duty ——— Unimproved dirt ———
U. S. Route ——— State Route ———



BAXTER, MINN.
SE/4 PILLAGER 15' QUADRANGLE
N4615-W9415/7.5

1954

UNIVERSITY OF WISCONSIN
Department of Geography