

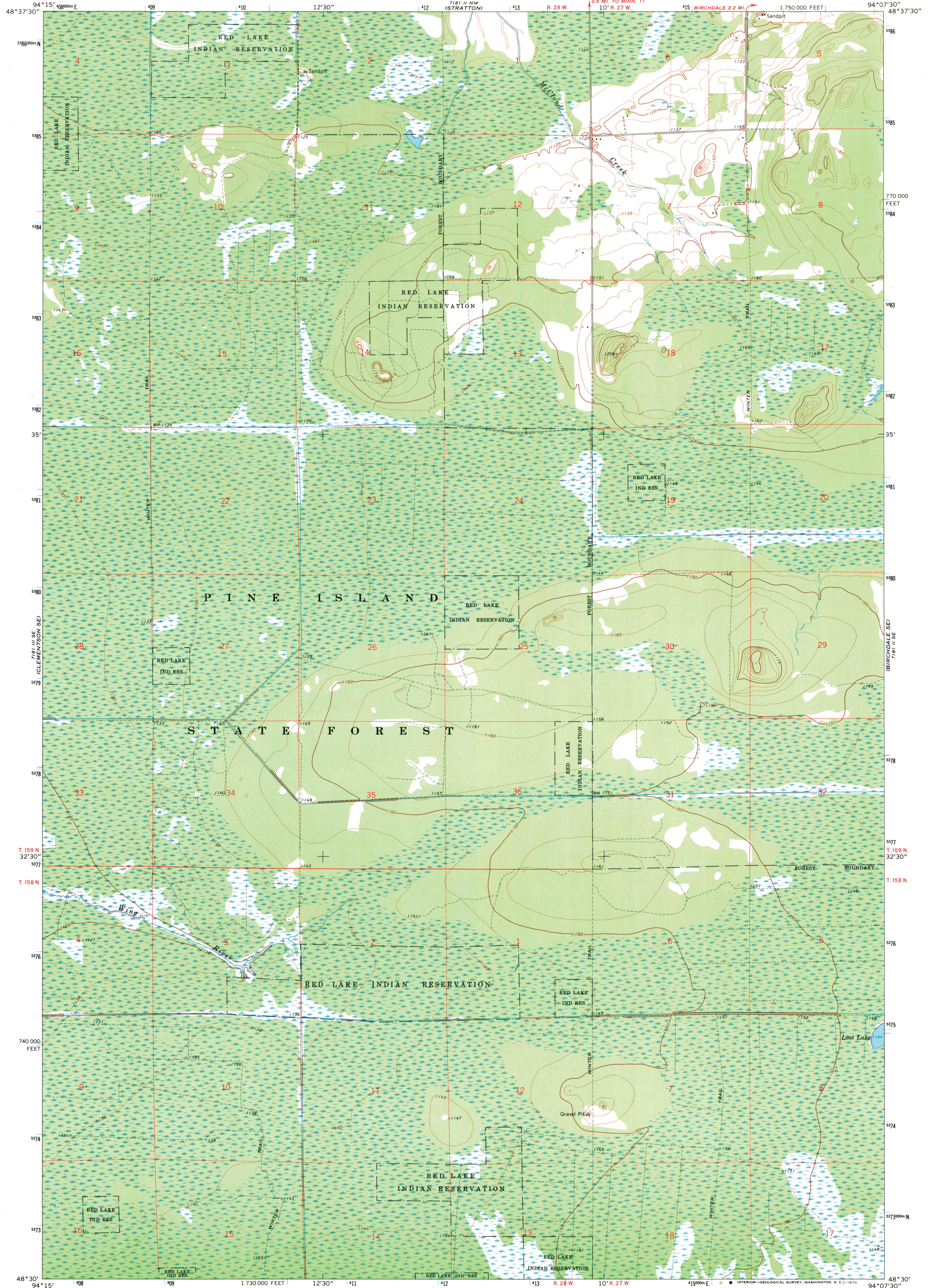
7 1/2 MIN. (BIRCHDALE SW)

UNITED STATES
DEPARTMENT OF THE INTERIOR
GEOLOGICAL SURVEY

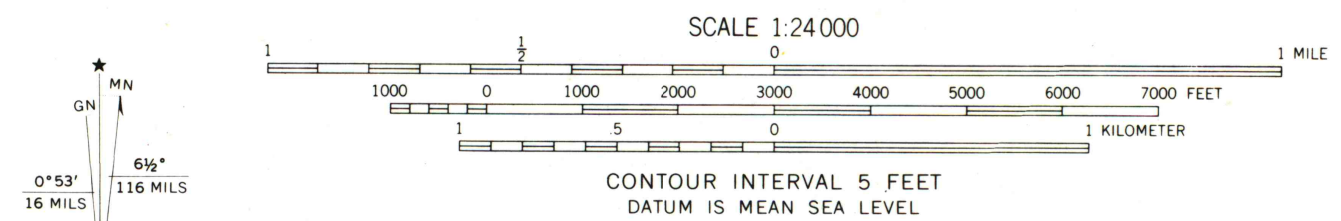
STATE OF MINNESOTA
DEPARTMENT OF ADMINISTRATION

BIRCHDALE SW QUADRANGLE
MINNESOTA—KOOCHICING CO.
7.5 MINUTE SERIES (TOPOGRAPHIC)

7 1/2 MIN. (BIRCHDALE E)



Mapped, edited, and published by the Geological Survey
Control by USGS and USC&GS
Planimetry by photogrammetric methods from aerial photographs
taken 1966. Topography by planetable surveys 1968
Polyconic projection. 1927 North American datum
10,000-foot grid based on Minnesota coordinate system, north zone
1000-meter Universal Transverse Mercator grid ticks,
zone 15, shown in blue
Fine red dashed lines indicate selected fence and field lines
where generally visible on aerial photographs
This information is unchecked



ROAD CLASSIFICATION
Light-duty road, all weather, Unimproved road, fair or dry weather
improved surface

MAP AND AIR PHOTO LIBRARY
SEP 29 1970
University of Wisconsin

BIRCHDALE SW, MINN.
N4830—W9407.5/7.5

THIS MAP COMPLIES WITH NATIONAL MAP ACCURACY STANDARDS
FOR SALE BY U.S. GEOLOGICAL SURVEY, DENVER, COLORADO 80225, OR WASHINGTON, D.C. 20242
A FOLDER DESCRIBING TOPOGRAPHIC MAPS AND SYMBOLS IS AVAILABLE ON REQUEST

1968
AMS 7181 II SW—SERIES V872