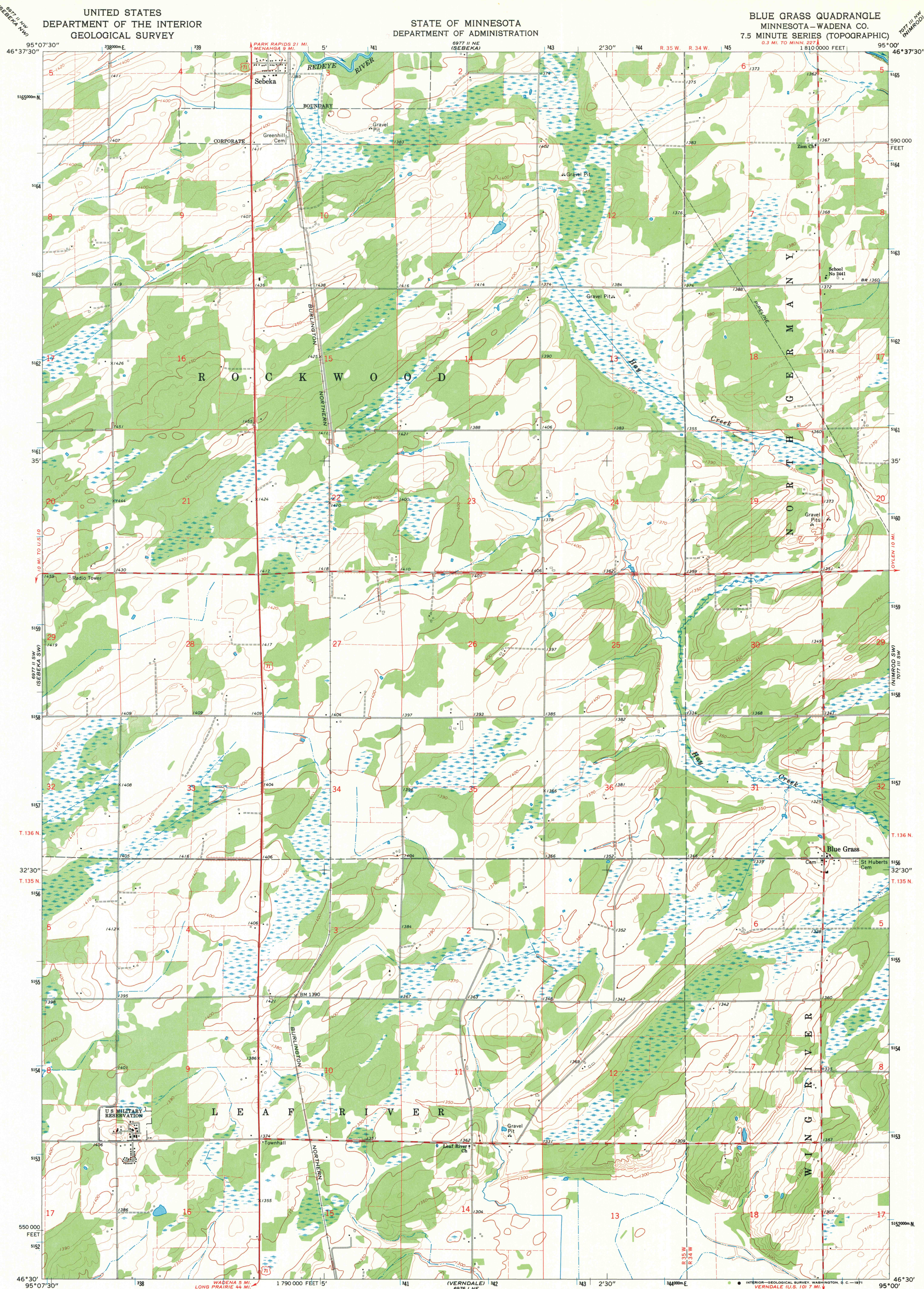


UNITED STATES  
DEPARTMENT OF THE INTERIOR  
GEOLOGICAL SURVEY

STATE OF MINNESOTA  
DEPARTMENT OF ADMINISTRATION

BLUE GRASS QUADRANGLE  
MINNESOTA—WADENA CO.  
7.5 MINUTE SERIES (TOPOGRAPHIC)



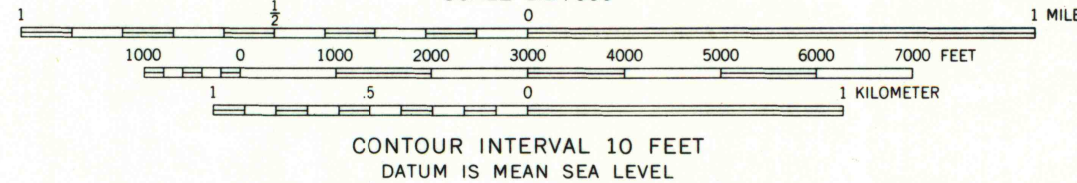
Maped, edited, and published by the Geological Survey

Control by USGS and USC&GS

Topography by photogrammetric methods from aerial photographs taken 1966. Field checked 1969

Polyconic projection. 1927 North American datum  
10,000-foot grid based on Minnesota coordinate system, central zone  
1000-meter Universal Transverse Mercator grid ticks,  
zone 15, shown in blue

Fine red dashed lines indicate selected fence and field lines where  
generally visible on aerial photographs  
This information is unchecked



ROAD CLASSIFICATION	
Primary highway, all weather, hard surface	Light-duty road, all weather, improved surface
Secondary highway, all weather, hard surface	Unimproved road, fair or dry weather
U. S. Route	



MAP AND AIR PHOTO

BLUE GRASS, MINN.  
N4630—W9500/7.5

SEP 29 1971

1969

AMS 6977 II SE—SERIES V872

THIS MAP COMPLIES WITH NATIONAL MAP ACCURACY STANDARDS  
FOR SALE BY U.S. GEOLOGICAL SURVEY, DENVER, COLORADO 80225, OR WASHINGTON, D. C. 20242  
A FOLDER DESCRIBING TOPOGRAPHIC MAPS AND SYMBOLS IS AVAILABLE ON REQUEST