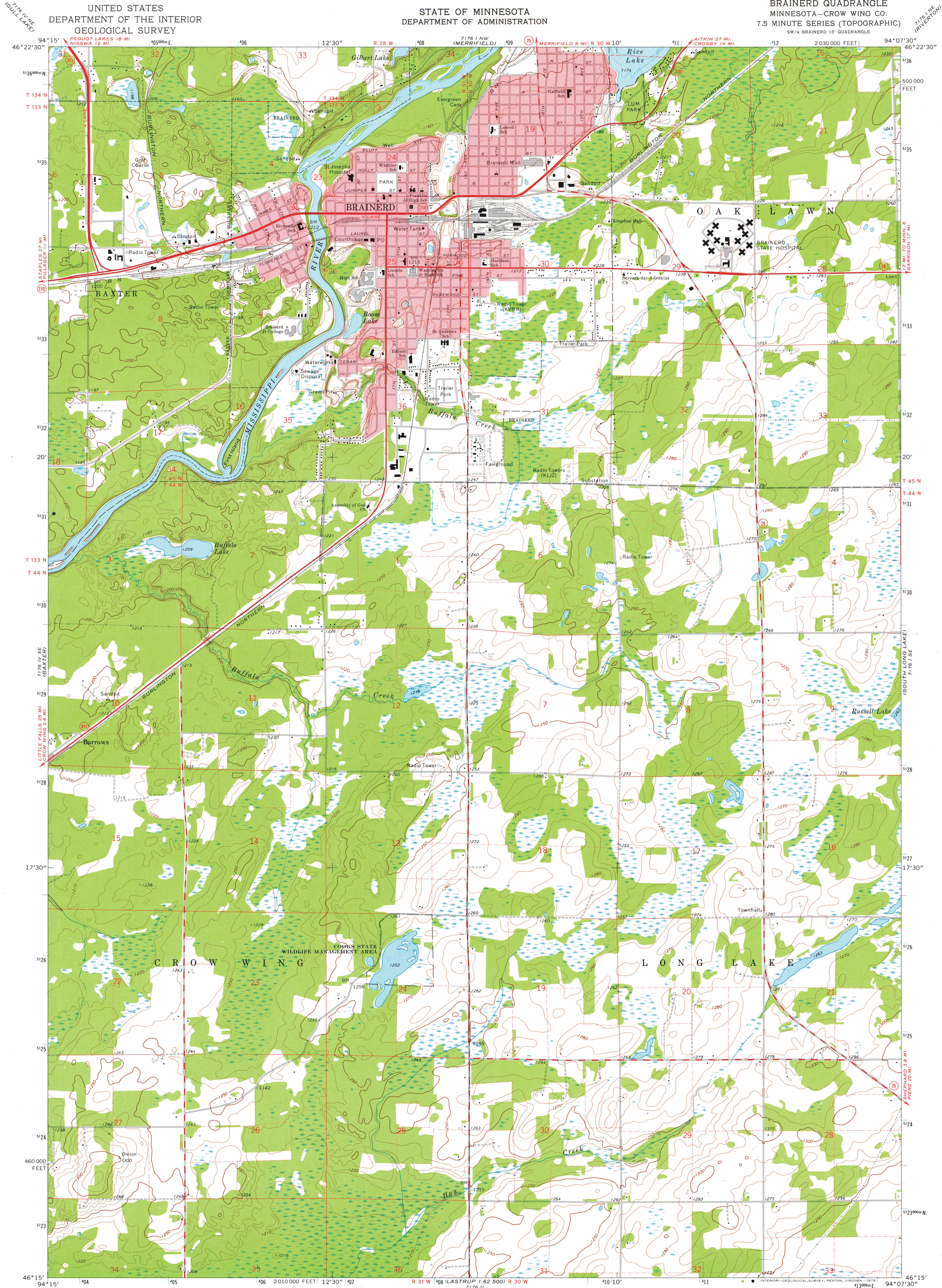


UNITED STATES
DEPARTMENT OF THE INTERIOR
GEOLOGICAL SURVEY

STATE OF MINNESOTA
DEPARTMENT OF ADMINISTRATION

BRainerd QUADRANGLE
MINNESOTA—CROW WING CO.
7.5 MINUTE SERIES (TOPOGRAPHIC)



Mapped, edited, and published by the Geological Survey

Control by USGS and NGS/NOAA

Topography by photogrammetric methods from aerial photographs taken 1973. Field checked 1973

Hydrography compiled from information furnished by Minnesota Department of Natural Resources

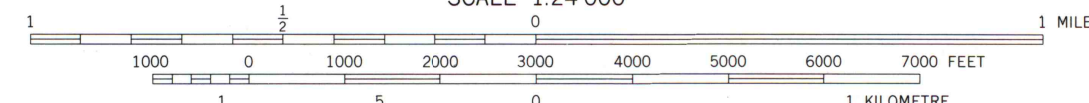
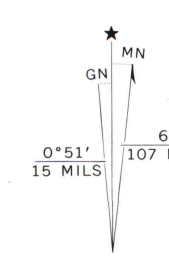
Projection and 10,000-foot grid ticks: Minnesota coordinate system, central zone (Lambert conformal conic)

1000-metre Universal Transverse Mercator grid ticks, zone 15, shown in blue. 1927 North American datum

Red tint indicates areas in which only landmark buildings are shown

Fine red dashed lines indicate selected fence and field lines where generally visible on aerial photographs

This information is unclassified



ROAD CLASSIFICATION

Primary highway, hard surface	Light-duty road, hard or improved surface
Secondary highway, hard surface	Unimproved road
Interstate Route	U. S. Route
	State Route



MAP AND AIR PHOTO LIBRARY

BRainerd, MINN.
SW 1/4 BRainerd 15' QUADRANGLE
N4615—W9407.5/7.5

MAY 25 1976

1973

THIS MAP COMPLIES WITH NATIONAL MAP ACCURACY STANDARDS
FOR SALE BY U. S. GEOLOGICAL SURVEY, RESTON, VIRGINIA 22092
A FOLDER DESCRIBING TOPOGRAPHIC MAPS AND SYMBOLS IS AVAILABLE ON REQUEST