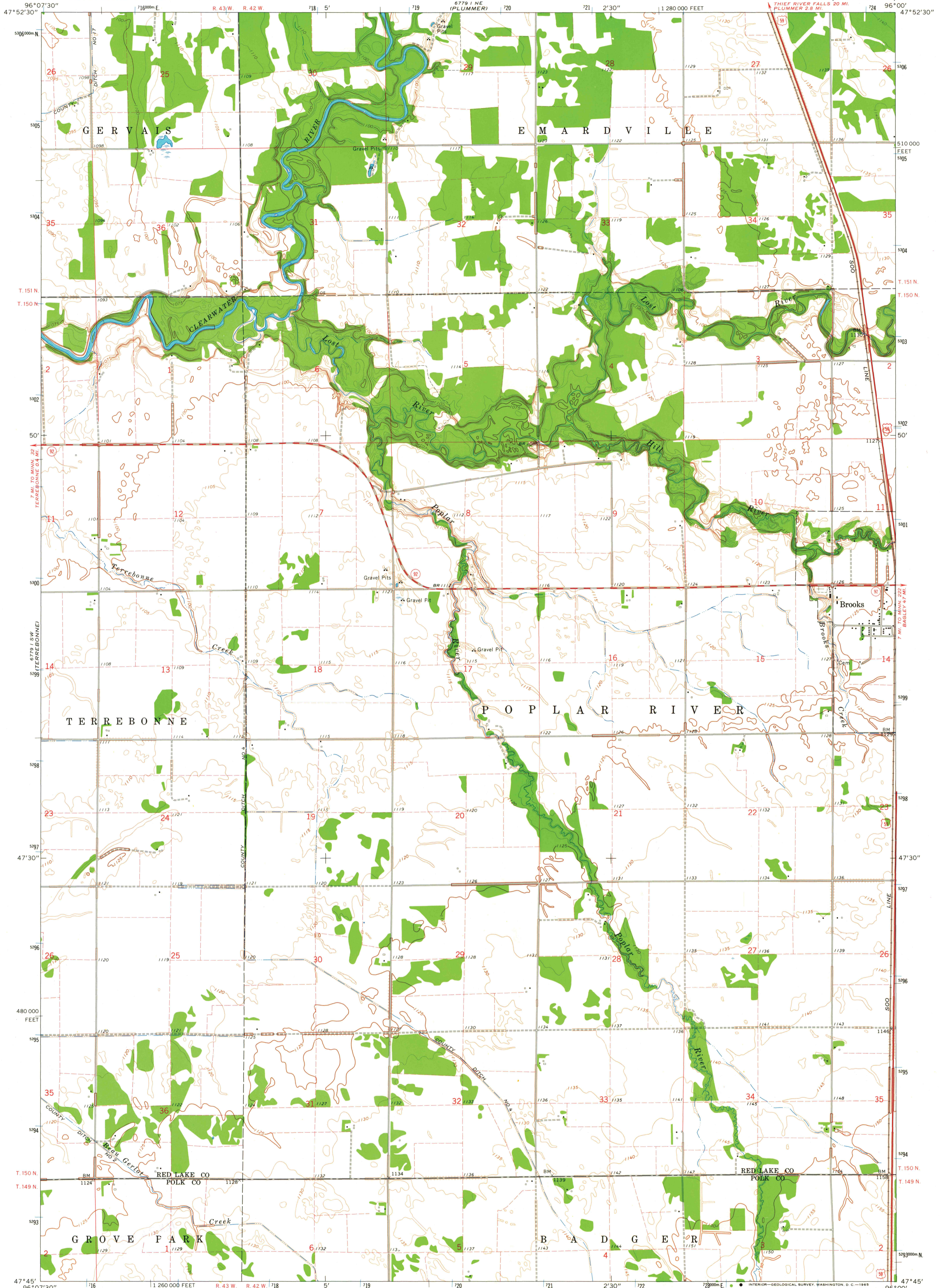


6779 1 SW
(PLUMMER NW)

UNITED STATES
DEPARTMENT OF THE INTERIOR
GEOLOGICAL SURVEY

STATE OF MINNESOTA
DEPARTMENT OF CONSERVATION

BROOKS QUADRANGLE
MINNESOTA
7.5 MINUTE SERIES (TOPOGRAPHIC)



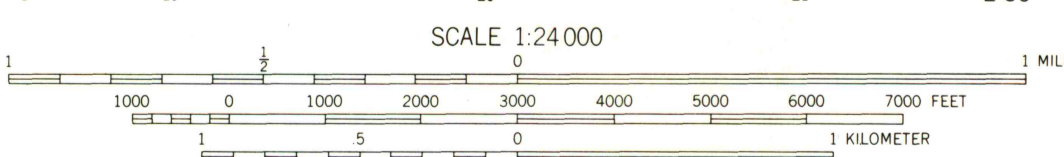
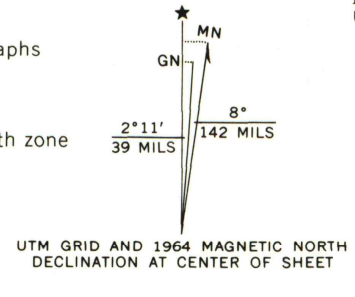
Mapped, edited, and published by the Geological Survey

Control by USGS and USC&GS

Planimetry by photogrammetric methods from aerial photographs taken 1963. Topography by planetable surveys 1964

Polyconic projection. 1927 North American datum 10,000-foot grid based on Minnesota coordinate system, north zone 1000-meter Universal Transverse Mercator grid ticks, zone 14, shown in blue

Fine red dashed lines indicate selected fence and field lines where generally visible on aerial photographs. This information is unchecked



CONTOUR INTERVAL 5 FEET

DATUM IS MEAN SEA LEVEL

MAP AND AIR PHOTO LIBRARY
University of Wisconsin



ROAD CLASSIFICATION	
Heavy-duty	Light-duty
Medium-duty	Unimproved dirt
U.S. Route	State Route

THIS MAP COMPLIES WITH NATIONAL MAP ACCURACY STANDARDS
FOR SALE BY U.S. GEOLOGICAL SURVEY, DENVER, COLORADO 80225, OR WASHINGTON, D. C. 20242
A FOLDER DESCRIBING TOPOGRAPHIC MAPS AND SYMBOLS IS AVAILABLE ON REQUEST

BROOKS, MINN.
N4745—W9600/7.5

1964

AMS 6779 1 SE—SERIES 8872