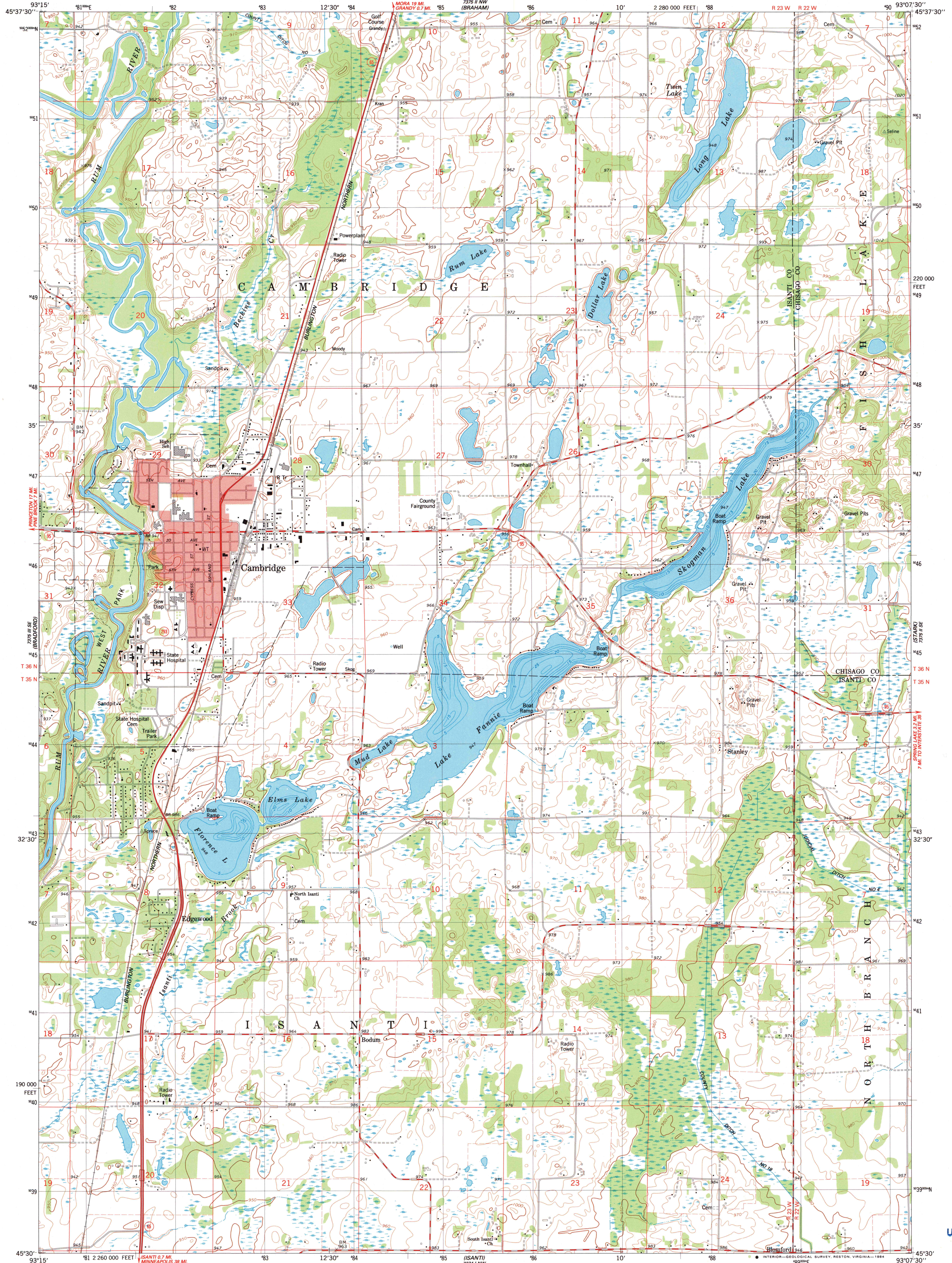


UNITED STATES
DEPARTMENT OF THE INTERIOR
GEOLOGICAL SURVEY

CAMBRIDGE QUADRANGLE
MINNESOTA
7.5 MINUTE SERIES (TOPOGRAPHIC)
SW/4 CAMBRIDGE 15' QUADRANGLE



Mapped, edited, and published by the Geological Survey

Control by USGS and NOS/NOAA

Topography by photogrammetric methods from aerial photographs taken 1978. Field checked 1980. Map edited 1983

Hydrography compiled from information furnished by Minnesota Department of Natural Resources

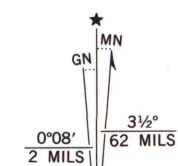
Projection and 10,000-foot grid ticks: Minnesota coordinate system, central zone (Lambert conformal conic)

1000-meter Universal Transverse Mercator grid, zone 15

1927 North American Datum

To place on the predicted North American Datum 1983, move the projection lines 8 meters north and 17 meters east as shown by dashed corner ticks

Fine red dashed lines indicate selected fence and field lines where generally visible on aerial photographs



UTM GRID and 1983 MAGNETIC NORTH DECLINATION AT CENTER OF SHEET

SCALE 1:24 000

CONTOUR INTERVAL 10 FEET

NATIONAL GEODETIC VERTICAL DATUM OF 1929

THIS MAP COMPLIES WITH NATIONAL MAP ACCURACY STANDARDS

FOR SALE BY U. S. GEOLOGICAL SURVEY, RESTON, VIRGINIA 22092

A FOLDER DESCRIBING TOPOGRAPHIC MAPS AND SYMBOLS IS AVAILABLE ON REQUEST

ROAD CLASSIFICATION

Primary highway, hard surface

Secondary highway, hard surface

Unimproved road

Interstate Route

U. S. Route

State Route

CAMBRIDGE, MINN.

SW/4 CAMBRIDGE 15' QUADRANGLE

N4530-W9307.5/7.5

1983

DMA 7375 II SW-SERIES V872

A.H. ROBINSON
MAP LIBRARY

AUG 24 1984

University of Wisconsin
Madison