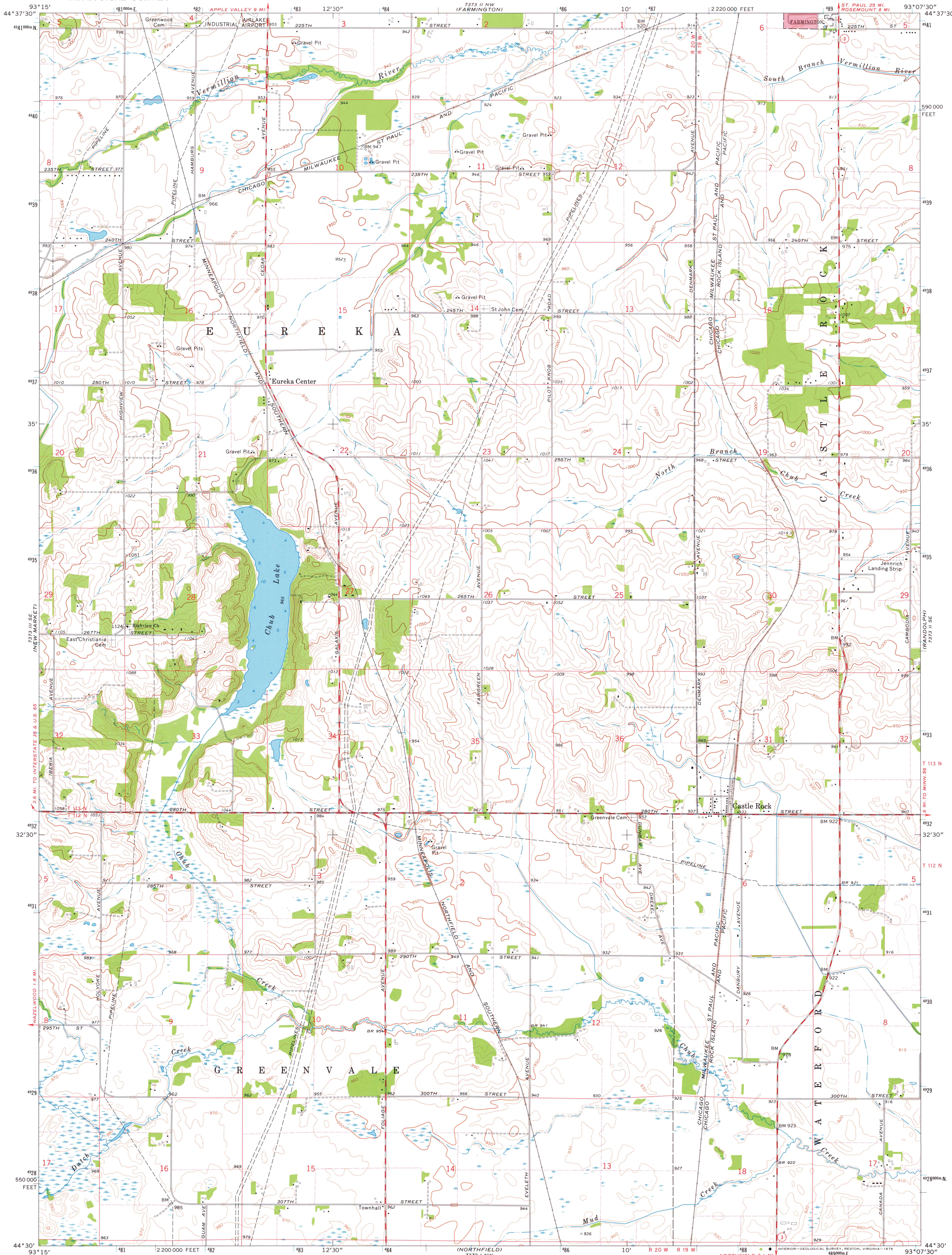


UNITED STATES  
DEPARTMENT OF THE INTERIOR  
GEOLOGICAL SURVEY

STATE OF MINNESOTA  
DEPARTMENT OF ADMINISTRATION

CASTLE ROCK QUADRANGLE  
MINNESOTA-DAKOTA CO.  
7.5 MINUTE SERIES (TOPOGRAPHIC)  
BW/4 FARMINGTON 15' QUADRANGLE

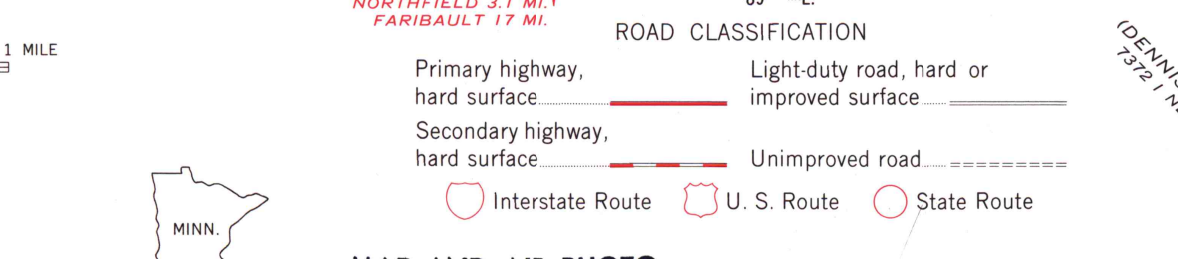
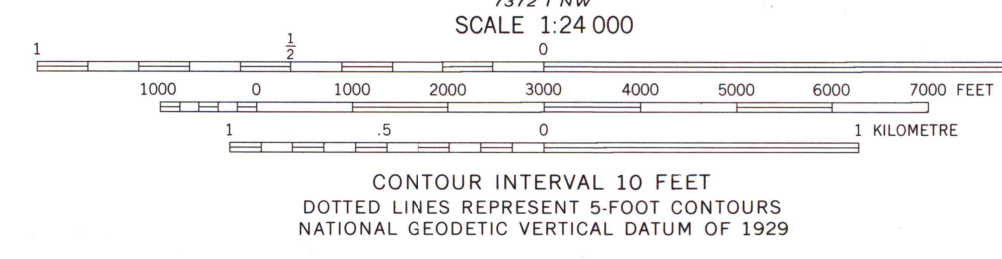
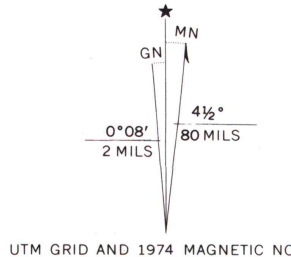


Mapped, edited, and published by the Geological Survey

Control by USGS and NOS/NOAA  
Topography by photogrammetric methods from aerial  
photographs taken 1973. Field checked 1974

Hydrography compiled from information furnished by  
Minnesota Department of Natural Resources

Projection and 10,000-foot grid ticks: Minnesota coordinate  
system, south zone (Lambert conformal conic)  
1000-metre Universal Transverse Mercator grid ticks,  
zone 15, shown in blue. 1927 North American datum  
Red tint indicates area in which only landmark buildings are shown  
Fine red dashed lines indicate selected fence and field lines  
where generally visible on aerial photographs  
This information is uncorrected



MAP AND AIR PHOTO  
LIBRARY

CASTLE ROCK, MINN.  
SW/4 FARMINGTON 15' QUADRANGLE  
N4430-W9307.5/7.5

JUN 3 1977

1974

THIS MAP COMPLIES WITH NATIONAL MAP ACCURACY STANDARDS  
FOR SALE BY U.S. GEOLOGICAL SURVEY, RESTON, VIRGINIA 22092  
A FOLDER DESCRIBING TOPOGRAPHIC MAPS AND SYMBOLS IS AVAILABLE ON REQUEST