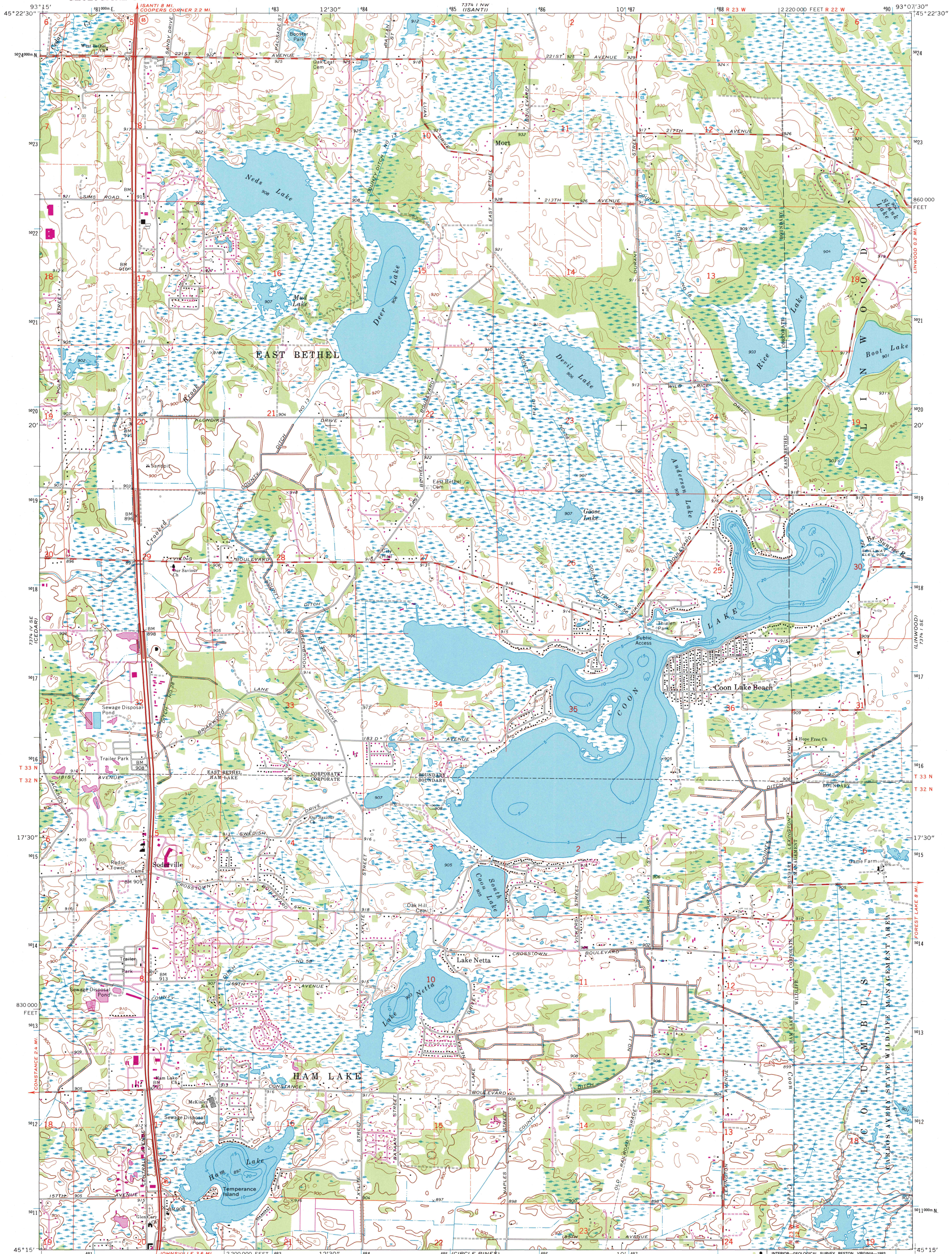


UNITED STATES
DEPARTMENT OF THE INTERIOR
GEOLOGICAL SURVEY

STATE OF MINNESOTA
DEPARTMENT OF ADMINISTRATION

COON LAKE BEACH QUADRANGLE
MINNESOTA—ANOKA CO.
7.5 MINUTE SERIES (TOPOGRAPHIC)
SW 4 ISANTI 15' QUADRANGLE



Produced by the United States Geological Survey
Control by USGS, NOS/NOAA and Minnesota Highway Department
Topography by photogrammetric methods from aerial photographs
taken 1973. Field checked 1974
Hydrography compiled from information furnished by
Minnesota Department of Natural Resources
Projection and 10,000-foot grid ticks: Minnesota coordinate
system, south zone (Lambert conformal conic)
1000-meter Universal Transverse Mercator grid ticks, zone 15, shown in blue
1927 North American Datum (NAD 27)
North American Datum of 1983 (NAD 83) is shown by dashed corner ticks
The values of the shift between NAD 27 and NAD 83 for 7.5-minute
intersections are given in USGS Bulletin 1875
There may be private inholdings within the boundaries of
the National or State reservations shown on this map
Fine red dashed lines indicate selected fence and field lines where
generally visible on aerial photographs. This information is unchecked

SCALE 1:24 000
1 0000 0 1000 2000 3000 4000 5000 6000 7000 FEET
1 5 0 5 1 KILOMETER
CONTOUR INTERVAL 10 FEET
NATIONAL GEODETIC VERTICAL DATUM OF 1929

ROAD CLASSIFICATION
Primary highway, hard surface
Secondary highway, hard surface
Light-duty road, hard or improved surface
Unimproved road
Interstate Route
U. S. Route
State Route

COON LAKE BEACH, MINN.
SW 4 ISANTI 15' QUADRANGLE
45093-C2-TF-024
1974
REVISED 1993
DMA 7374 1 SW-SERIES V872

A.H. ROBINSON
MAP LIBRARY
MAR 24 1994
University of Wisconsin
Madison
U.S. Regional
Depository Copy
DO NOT DISCARD