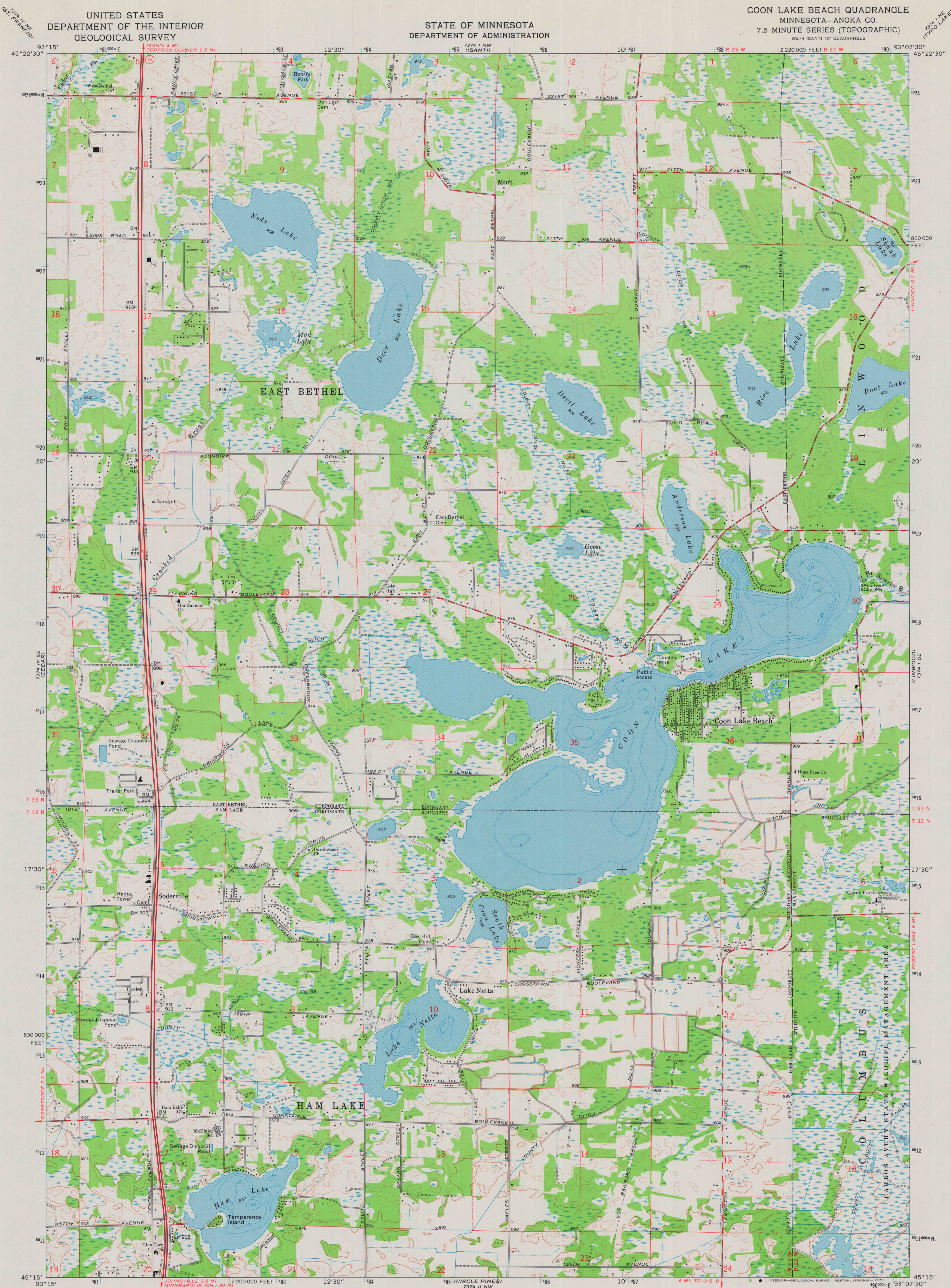


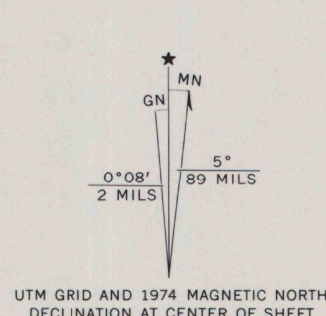
UNITED STATES
DEPARTMENT OF THE INTERIOR
GEOLOGICAL SURVEY

STATE OF MINNESOTA
DEPARTMENT OF ADMINISTRATION

COON LAKE BEACH QUADRANGLE
MINNESOTA—ANOKA CO.
7.5 MINUTE SERIES (TOPOGRAPHIC)
SW 1/4 (SANTI 15' QUADRANGLE)



Mapped, edited, and published by the Geological Survey
Control by USGS, NOS/NOAA, and Minnesota Highway Department
Topography by photogrammetric methods from aerial
photographs taken 1973. Field checked 1974
Hydrography compiled from information furnished by
Minnesota Department of Natural Resources
Projection and 10,000-foot grid ticks: Minnesota coordinate
system, south zone (Lambert conformal conic)
1000-metre Universal Transverse Mercator grid ticks,
zone 15, shown in blue. 1927 North American datum
Fine red dashed lines indicate selected fence and field lines
where generally visible on aerial photographs
This information is unchecked



SCALE 1:24 000
CONTOUR INTERVAL 10 FEET
NATIONAL GEODETIC VERTICAL DATUM OF 1929



ROAD CLASSIFICATION
Primary highway, hard surface
Secondary highway, hard surface
Light-duty road, hard or improved surface
Unimproved road
Interstate Route
U.S. Route
State Route

COON LAKE BEACH, MINN.
SW 1/4 (SANTI 15' QUADRANGLE)
N4515-W9307.5/7.5
1974

AMS 7374 I SW—SERIES V872

MAP AND AIR PHOTO
LIBRARY
JAN 18 1977
University of Wisconsin
Madison