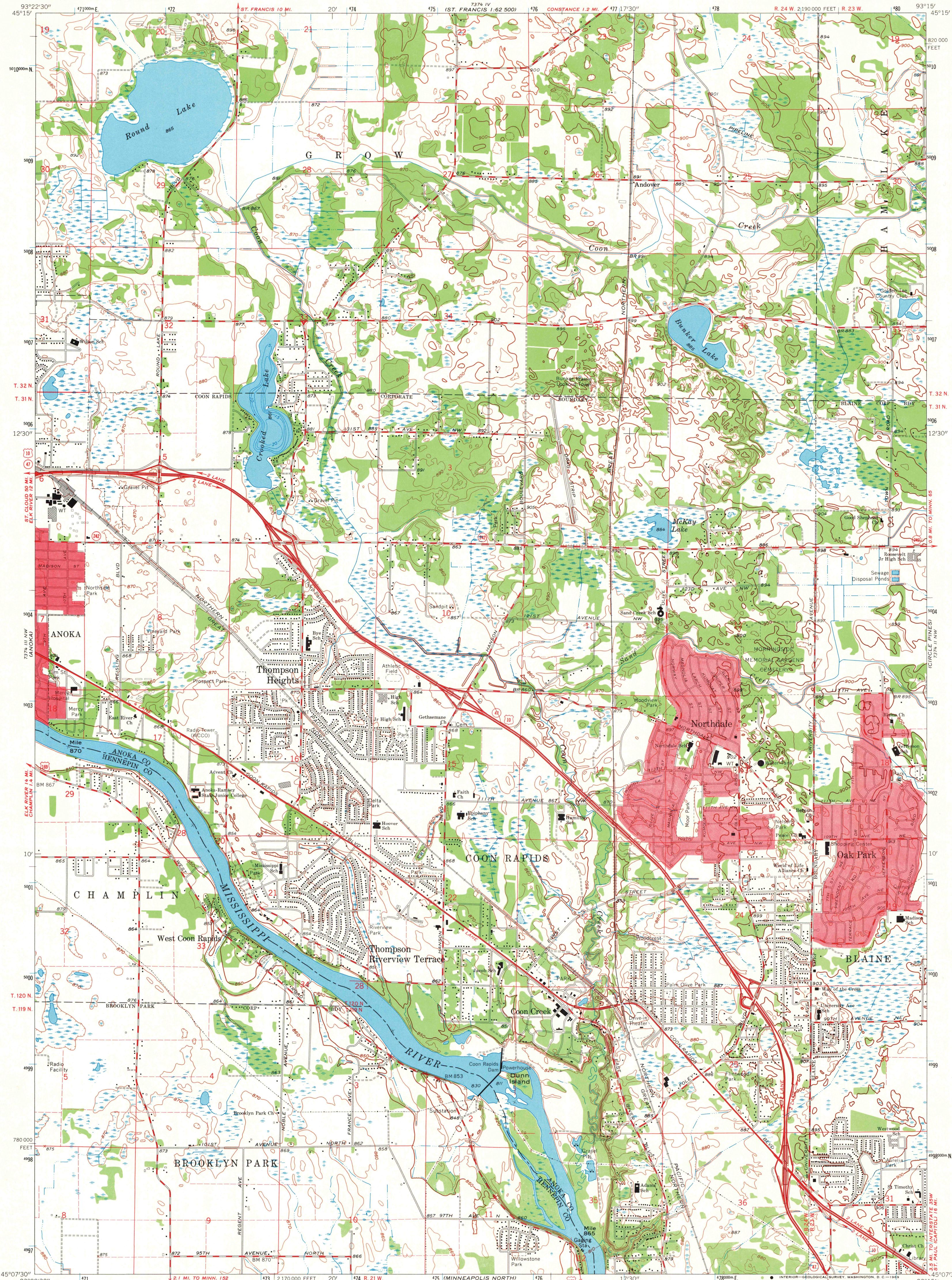


UNITED STATES  
DEPARTMENT OF THE INTERIOR  
GEOLOGICAL SURVEY

COON RAPIDS QUADRANGLE  
MINNESOTA  
7.5 MINUTE SERIES (TOPOGRAPHIC)  
NE/4 ANOKA 15' QUADRANGLE



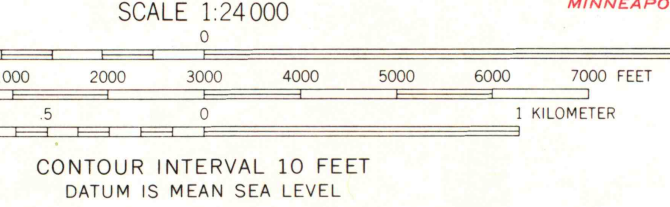
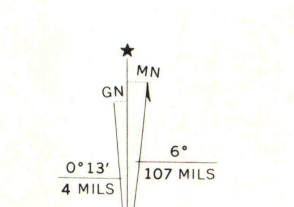
Mapped, edited, and published by the Geological Survey  
Control by USGS, USC&GS, and USCE

Topography by photogrammetric methods from aerial photographs  
taken 1947. Field checked 1955. Revised 1967

Depth curves compiled from chart furnished by  
Minnesota Department of Conservation

Polyconic projection. 1927 North American datum  
10,000-foot grid based on Minnesota coordinate system, south zone  
1000-meter Universal Transverse Mercator grid ticks,  
zone 15, shown in blue

Red tint indicates areas in which only landmark buildings are shown  
Fine red dashed lines indicate selected fence and field lines where  
generally visible on aerial photographs. This information is unchecked



ROAD CLASSIFICATION

Heavy-duty	Light-duty
Medium-duty	Unimproved dirt
U.S. Route	State Route



MAP AIR PHOTO LIBRARY

COON RAPIDS, MINN.  
NE/4 ANOKA 15' QUADRANGLE  
N4507.5-W9315.7.5

DEC 2 - 1969

1967  
AMS 7374 III NE-SERIES V872