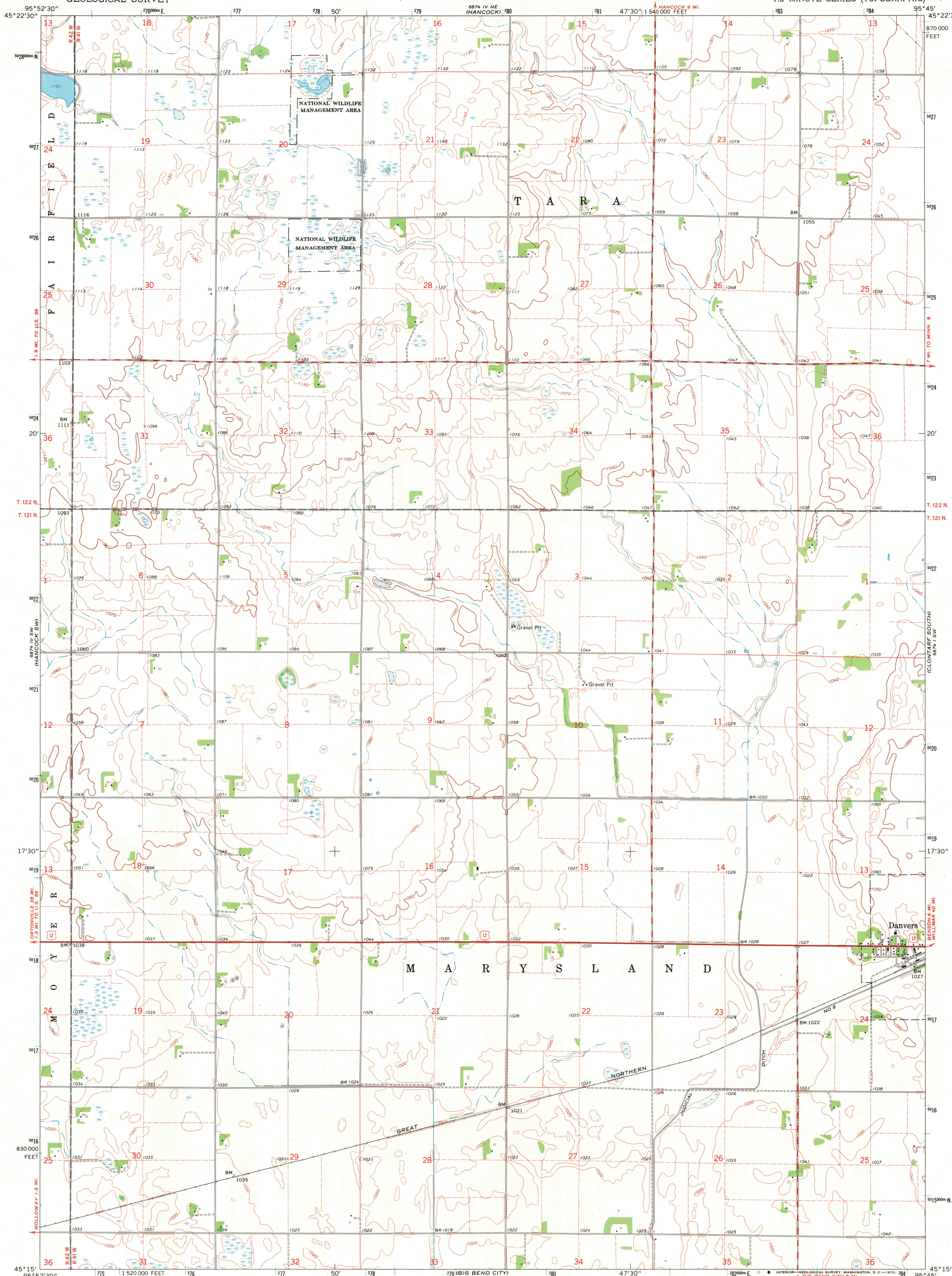


UNITED STATES
DEPARTMENT OF THE INTERIOR
GEOLOGICAL SURVEY

STATE OF MINNESOTA
DEPARTMENT OF ADMINISTRATION

DANVERS QUADRANGLE
MINNESOTA—SWIFT CO.
7.5 MINUTE SERIES (TOPOGRAPHIC)



Mapped, edited, and published by the Geological Survey

Control by USGS and USC&GS

Topography by photogrammetric methods from aerial

photographs taken 1965. Field checked 1968

Polyconic projection. 1927 North American datum

10,000-foot grid based on Minnesota coordinate system, south zone

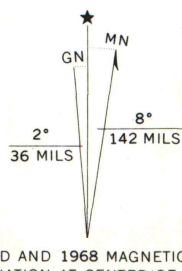
1000-meter Universal Transverse Mercator grid ticks,

zone 15, shown in blue

Fine red dashed lines indicate selected fence and field lines where

generally visible on aerial photographs

This information is unchecked



CONTOUR INTERVAL 10 FEET
DATUM IS MEAN SEA LEVEL

ROAD CLASSIFICATION

Primary highway, all weather, Light-duty road, all weather,
hard surface, improved surface

Secondary highway, all weather, Unimproved road, fair or dry
hard surface, weather

U.S. Route



QUADRANGLE LOCATION

DANVERS, MINN.

N4515—W9545/7.5

1968

THIS MAP COMPLIES WITH NATIONAL MAP ACCURACY STANDARDS
FOR SALE BY U.S. GEOLOGICAL SURVEY, DENVER, COLORADO 80225 OR WASHINGTON, D.C. 20242
A FOLDER DESCRIBING TOPOGRAPHIC MAPS AND SYMBOLS IS AVAILABLE ON REQUEST

NOV 5 - 1970