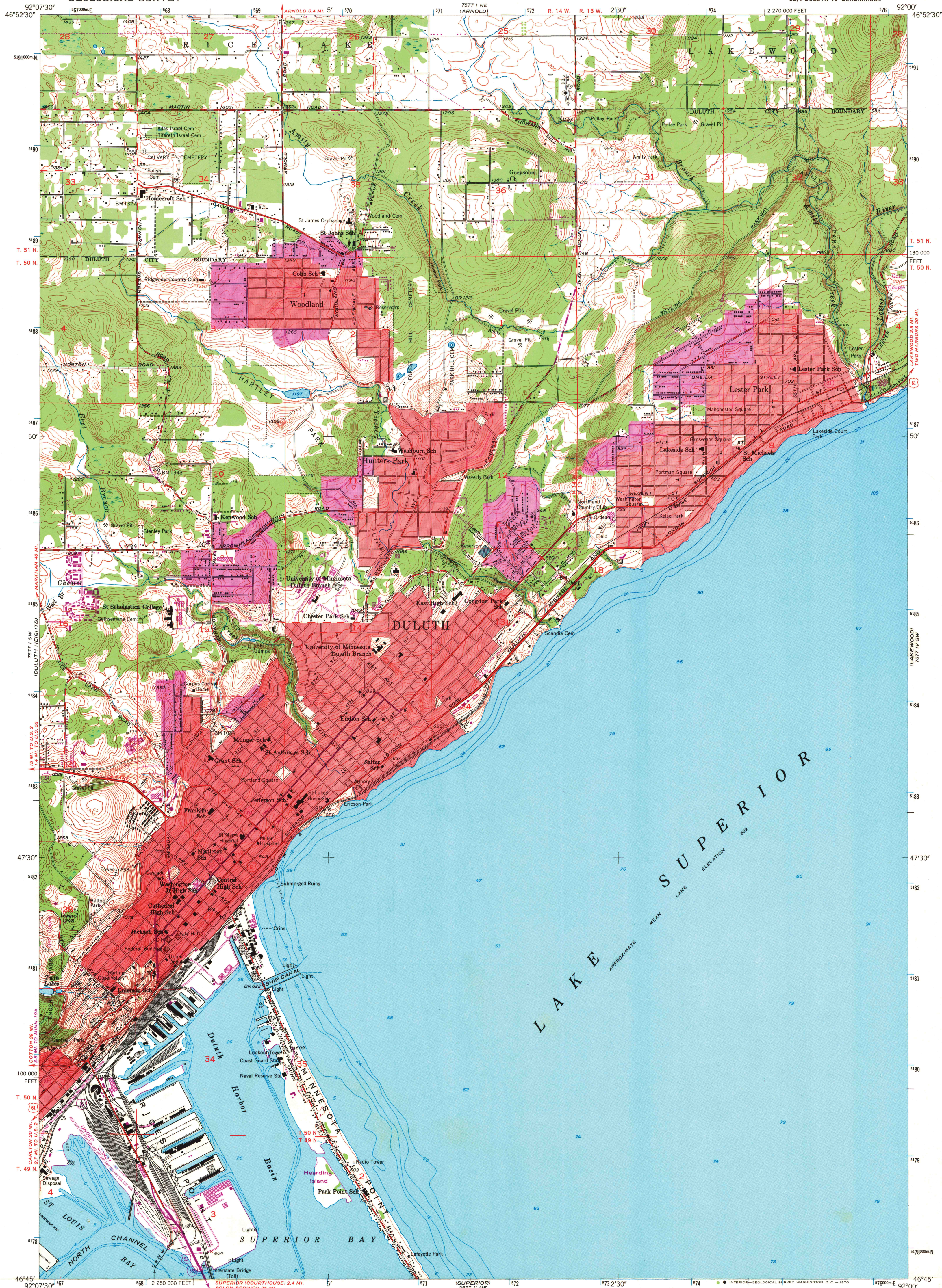


UNITED STATES
DEPARTMENT OF THE INTERIOR
GEOLOGICAL SURVEY

DULUTH QUADRANGLE
MINNESOTA-ST. LOUIS CO.
7.5 MINUTE SERIES (TOPOGRAPHIC)
SE/4 DULUTH 15' QUADRANGLE



Mapped, edited, and published by the Geological Survey

Control by USGS, USC&GS, and U. S. Lake Survey

Topography from aerial photographs by multiplex methods

Aerial photographs taken 1952. Field check 1953

Hydrography from U. S. Lake Survey Charts 96 (1:120 000)

and 966 (1:15 000)

Polyconic projection. 1927 North American datum

10,000-foot grid based on Minnesota coordinate system, north zone

1000-meter Universal Transverse Mercator grid ticks,

zone 15, shown in blue

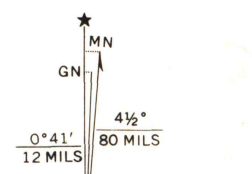
Red tint indicates areas in which only landmark buildings are shown

Revisions shown in purple compiled in cooperation with the

State of Minnesota from aerial photographs taken 1969

This information not field checked

Purple tint indicates extension of urban areas



SCALE 1:24000

CONTOUR INTERVAL 10 FEET

DATUM IS MEAN SEA LEVEL

DEPTH CURVES AND SOUNDINGS IN FEET—DATUM IS 601 FEET

THIS MAP COMPLIES WITH NATIONAL MAP ACCURACY STANDARDS

FOR SALE BY U. S. GEOLOGICAL SURVEY, DENVER, COLORADO 80225 OR WASHINGTON, D. C. 20242

A FOLDER DESCRIBING TOPOGRAPHIC MAPS AND SYMBOLS IS AVAILABLE ON REQUEST



QUADRANGLE LOCATION

ROAD CLASSIFICATION
Heavy-duty ——— 4 LANE 6 LANE Light-duty ———
Medium-duty ——— 4 LANE 6 LANE Unimproved dirt ———
U. S. Route ——— State Route ———
Interstate Route ———

DULUTH, MINN.

SE/4 DULUTH 15' QUADRANGLE

N4645—W9200/7.5

PHOTOREVISED 1969

17 1971

1953

Added along left side and bottom 4-14-00 H