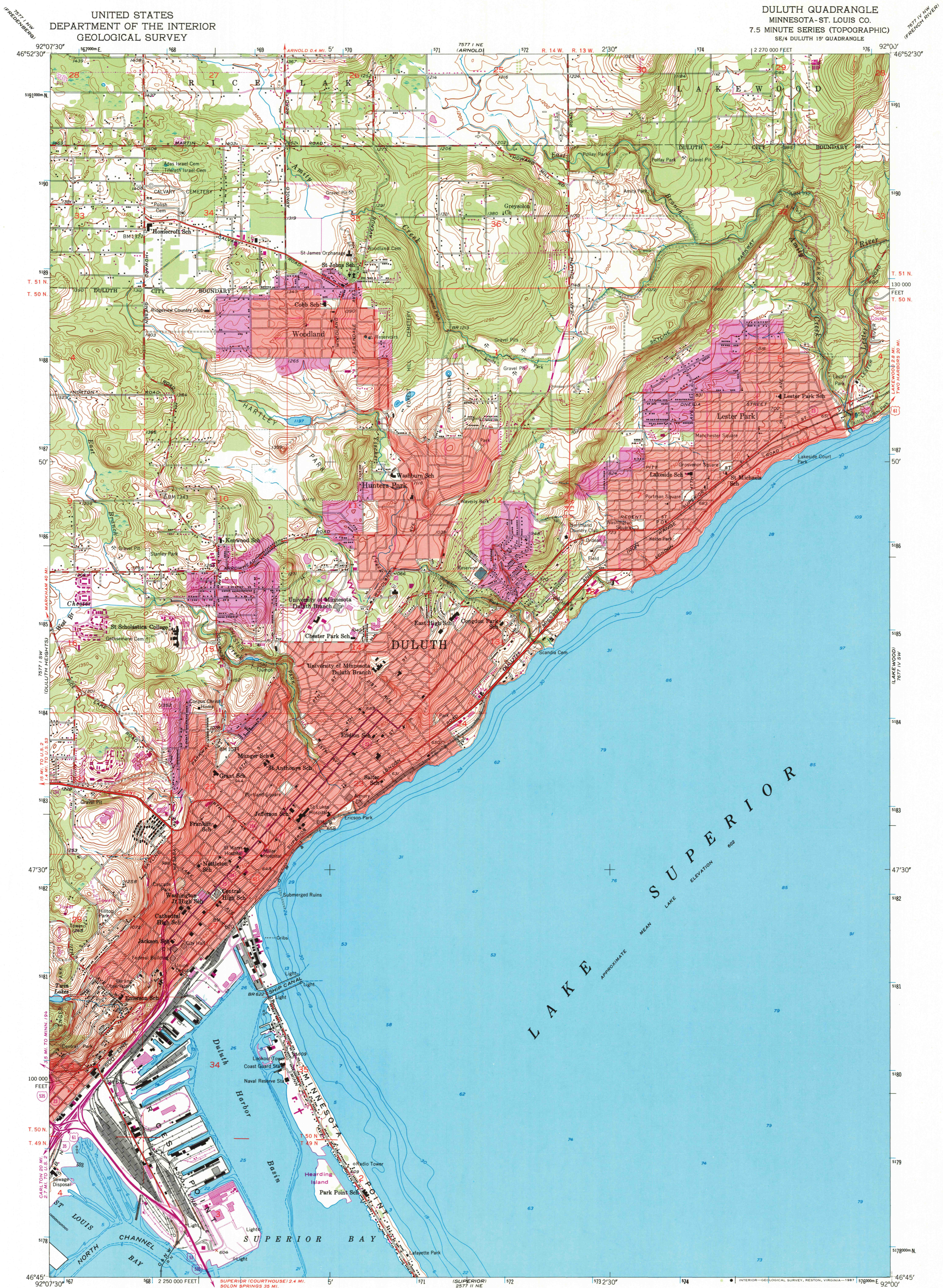


UNITED STATES
DEPARTMENT OF THE INTERIOR
GEOLOGICAL SURVEY

DULUTH QUADRANGLE
MINNESOTA-ST. LOUIS CO.
7.5 MINUTE SERIES (TOPOGRAPHIC)
SE/4 DULUTH 15' QUADRANGLE



Mapped, edited, and published by the Geological Survey

Control by USGS, US&GS, and U. S. Lake Survey

Topography from aerial photographs by multiplex methods

Aerial photographs taken 1952. Field check 1953

Hydrography from U. S. Lake Survey Charts 96 (1:120 000) and 966 (1:15 000)

Polyconic projection. 1927 North American datum

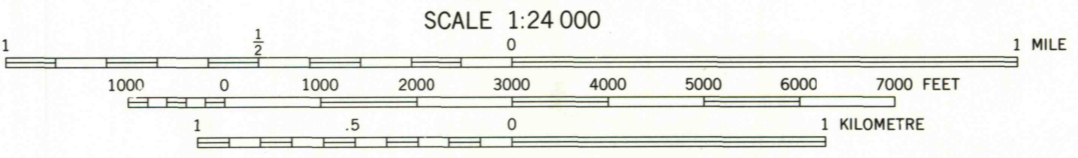
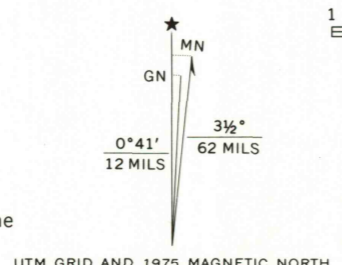
10,000-foot grid based on Minnesota coordinate system, north zone

1,000-metre Universal Transverse Mercator grid ticks zone 15, shown in blue

Red tint indicates areas in which only landmark buildings are shown

Revisions shown in purple compiled in cooperation with the State of Minnesota from aerial photographs taken 1969 and 1975. This information not field checked

Purple tint indicates extension of urban areas



CONTOUR INTERVAL 10 FEET
NATIONAL GEODETIC VERTICAL DATUM OF 1929
DEPTH CURVES AND SOUNDINGS IN FEET—DATUM IS 601 FEET

THIS MAP COMPLIES WITH NATIONAL MAP ACCURACY STANDARDS
FOR SALE BY U. S. GEOLOGICAL SURVEY
DENVER, COLORADO 80225, OR RESTON, VIRGINIA 22092
A FOLDER DESCRIBING TOPOGRAPHIC MAPS AND SYMBOLS IS AVAILABLE ON REQUEST



QUADRANGLE LOCATION

To place on the predicted North American Datum 1983, move the projection lines 7 meters north and 14 meters east as shown by dashed corner ticks

ROAD CLASSIFICATION

Heavy-duty	4 LANE 6 LANE	Light-duty	2 LANE 4 LANE
Medium-duty	4 LANE 6 LANE	Unimproved dirt	-----

U.S. Route State Route
 Interstate Route

DULUTH, MINN.
SE/4 DULUTH 15' QUADRANGLE
46092-G1-TF-024
1953
PHOTOREVISED 1969 AND 1975
DMA 7577 I SE—SERIES V872

USGS AND HISTORICAL MAP
JAN 22 1953
RECD FILE COPY