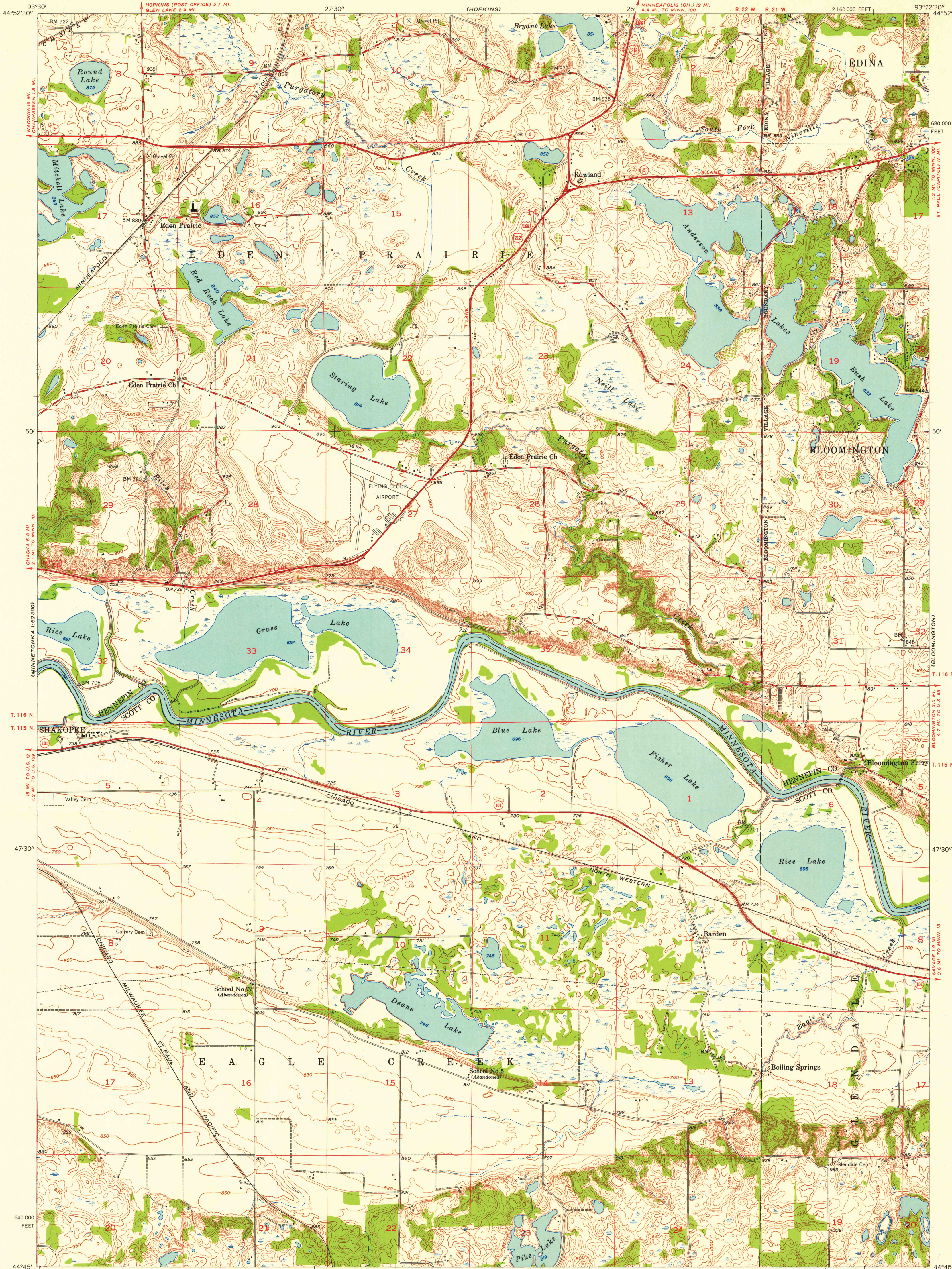


(MINNETONKA 1:62,500)

(MINNEAPOLIS SOUTH)

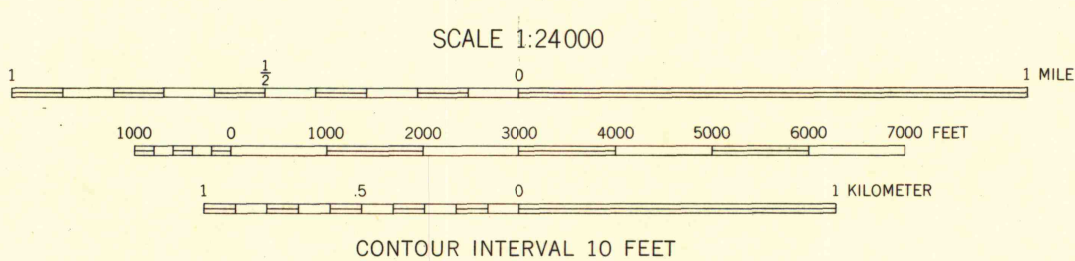
UNITED STATES
DEPARTMENT OF THE INTERIOR
GEOLOGICAL SURVEY

EDEN PRAIRIE QUADRANGLE
MINNESOTA
7.5 MINUTE SERIES (TOPOGRAPHIC)
SW 1/4 MINNEAPOLIS 15' QUADRANGLE



Mapped, edited, and published by the Geological Survey
Control by USGS and USC&GS
Topography from aerial photographs by Kelsh plotter
Aerial photographs taken 1947. Field check 1954
Polyconic projection. 1927 North American datum
10,000-foot grid based on Minnesota coordinate system,
south zone

TRUE NORTH
MAGNETIC NORTH
APPROXIMATE MEAN
DECLINATION, 1954



ROAD CLASSIFICATION
Heavy-duty ——— Light-duty ———
Medium-duty ——— Unimproved dirt ———
U.S. Route ——— State Route ———



THIS MAP COMPLIES WITH NATIONAL MAP ACCURACY STANDARDS
FOR SALE BY U. S. GEOLOGICAL SURVEY, FEDERAL CENTER, DENVER, COLORADO OR WASHINGTON 25, D. C.
A FOLDER DESCRIBING TOPOGRAPHIC MAPS AND SYMBOLS IS AVAILABLE ON REQUEST

EDEN PRAIRIE, MINN.
SW 1/4 MINNEAPOLIS 15' QUADRANGLE
N 4445-W 9322.5/7.5
Department of Geography

1954