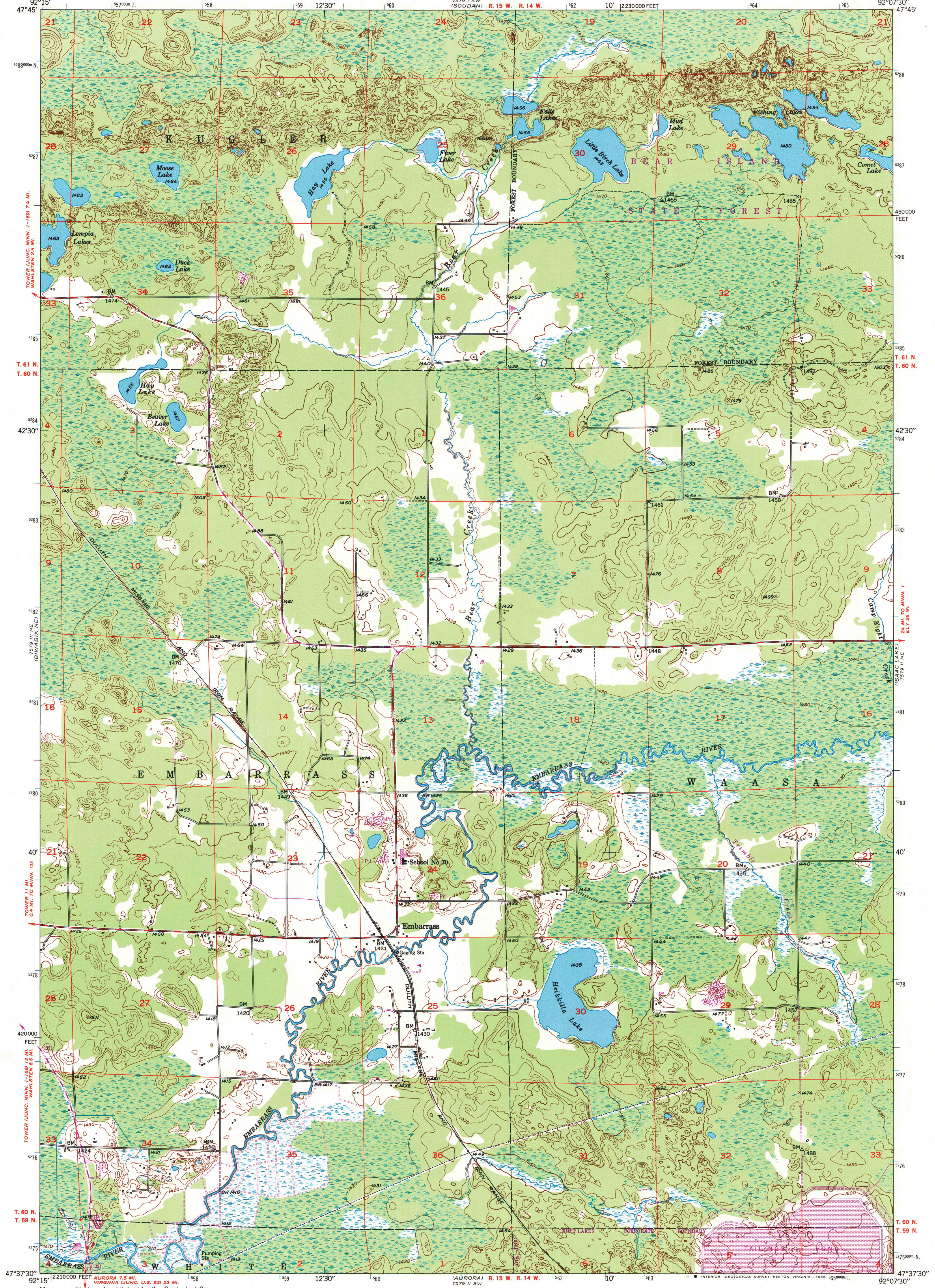


75° 15' 55" W
11° 55' 55" N

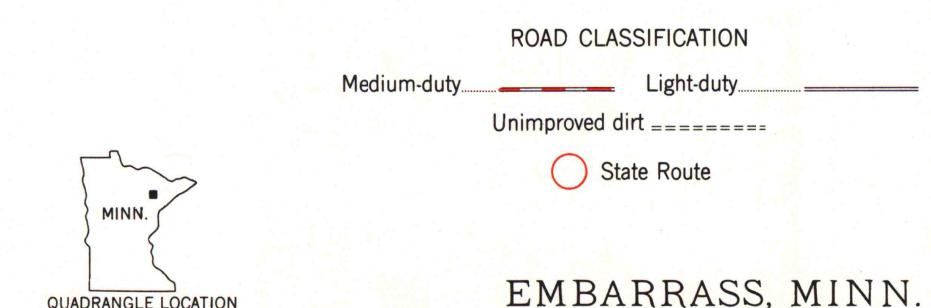
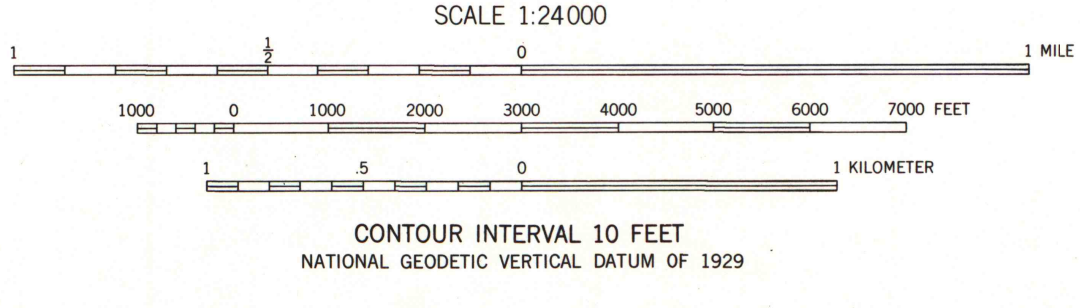
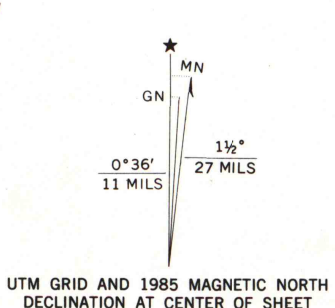
UNITED STATES
DEPARTMENT OF THE INTERIOR
GEOLOGICAL SURVEY

EMBARRASS QUADRANGLE
MINNESOTA-ST. LOUIS CO.
7.5 MINUTE SERIES (TOPOGRAPHIC)

75° 15' 55" W
11° 55' 55" N



Control by USGS and NOS/NOAA
Topography from aerial photographs by multiplex methods
Aerial photographs taken 1947. Field check 1949
Polyconic projection. 1927 North American Datum
10,000-foot grid based on Minnesota coordinate system,
north zone
1000-meter Universal Transverse Mercator grid ticks,
zone 15, shown in blue
To place on the predicted North American Datum 1983
move the projection lines 6 meters north and
14 meters east as shown by dashed corner ticks
There may be private inholdings within the boundaries
of the National or State reservations shown on this map



Revisions shown in purple and woodland
compiled from aerial photographs taken 1981
and other source data. Partial field check
by U. S. Forest Service. Map edited 1985

EMBARRASS, MINN.
47092-F2-TF-024
1949
PHOTOREVISED 1985

U. S. Regional
Depository Copy
DO NOT DISCARD

A.H. ROBINSON
MAP LIBRARY
FEB 27 1986
University of Wisconsin
Madison