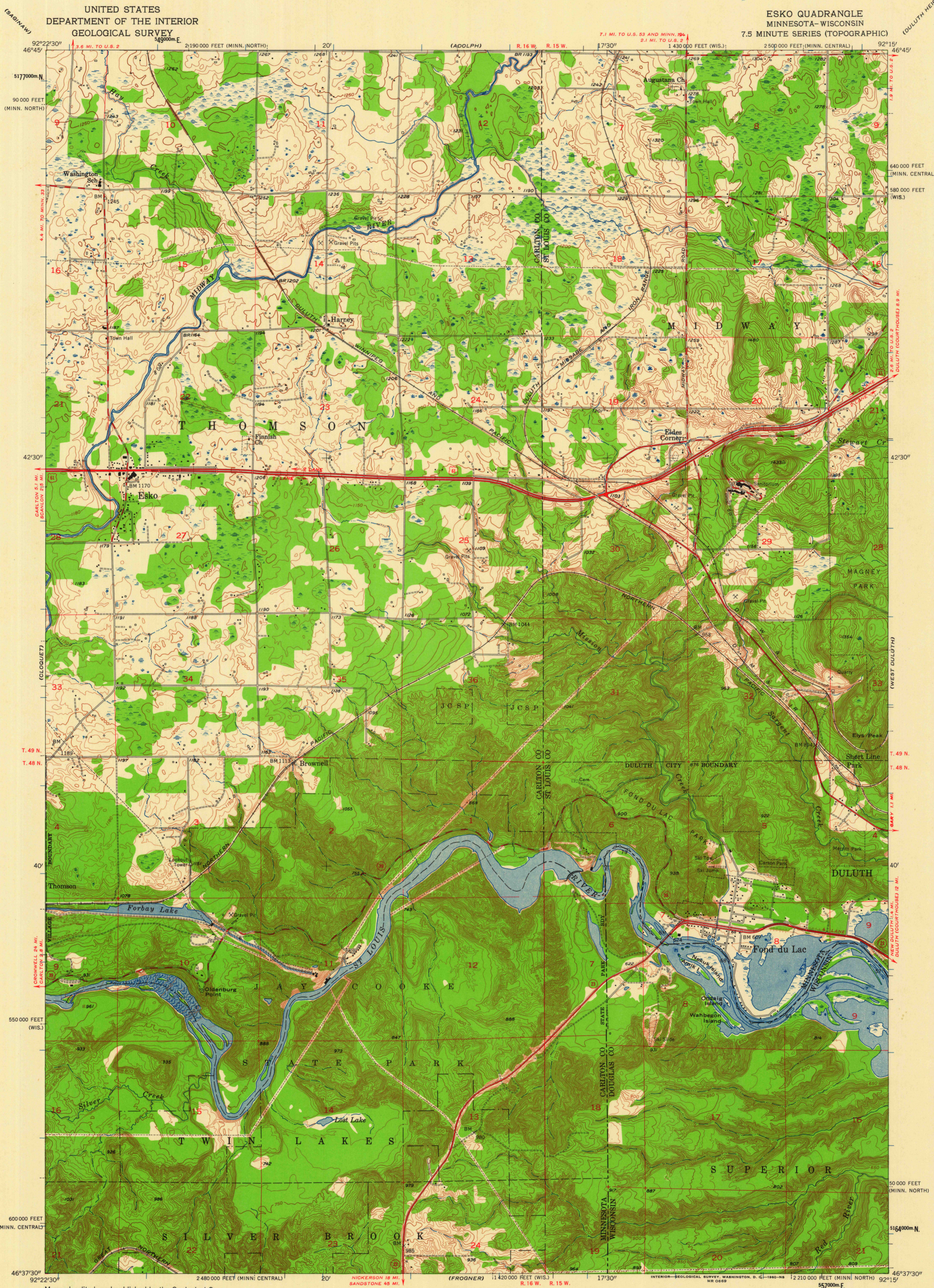


UNITED STATES
DEPARTMENT OF THE INTERIOR
GEOLOGICAL SURVEY

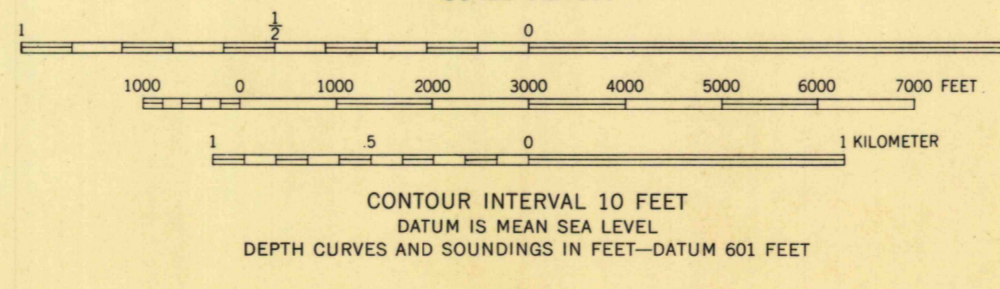
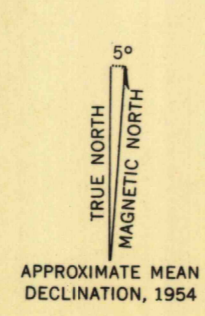
ESKO QUADRANGLE
MINNESOTA-WISCONSIN
7.5 MINUTE SERIES (TOPOGRAPHIC)



Mapped, edited, and published by the Geological Survey
Control by USGS and USC&GS

Topography from aerial photographs by Keish plottor
Aerial photographs taken 1952. Field check 1954
Hydrography from U.S. Lake Survey Chart 966 (1:15,000)

Polyconic projection. 1927 North American datum
10,000-foot grids based on Minnesota coordinate system,
central and north zones, and Wisconsin coordinate system,
north zone
1000-meter Universal Transverse Mercator grid ticks,
zone 15, shown in blue



CONTOUR INTERVAL 10 FEET
DATUM IS MEAN SEA LEVEL
DEPTH CURVES AND SOUNDINGS IN FEET-DATUM 601 FEET

THIS MAP COMPLIES WITH NATIONAL MAP ACCURACY STANDARDS
FOR SALE BY U.S. GEOLOGICAL SURVEY, DENVER 25, COLORADO OR WASHINGTON 25, D.C.
AND BY THE WISCONSIN GEOLOGICAL AND NATURAL HISTORY SURVEY, MADISON 6, WISCONSIN
A FOLDER DESCRIBING TOPOGRAPHIC MAPS AND SYMBOLS IS AVAILABLE ON REQUEST

USGS
Historical File
Topographic Division



QUADRANGLE LOCATION

ROAD CLASSIFICATION

Heavy-duty	Light-duty
Medium-duty	Unimproved dirt
U.S. Route	State Route

U.S.G.S.
FILE COPY
TOPOGRAPHIC DIVISION

ESKO, MINN.-WIS.
N 4637.5 - W 9215.7/5
1954

DEC 9 1954

35