

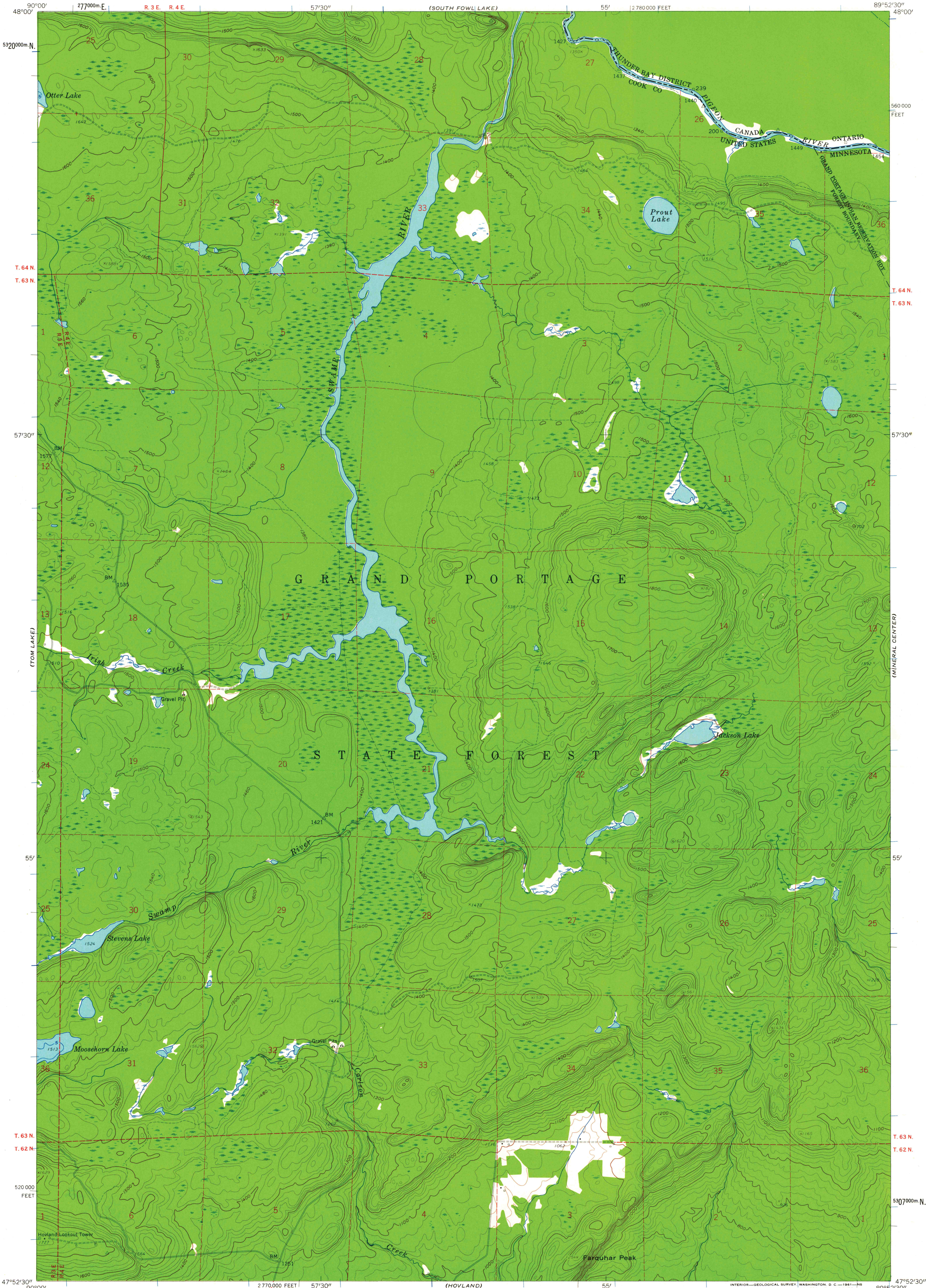
(FINE LAKE EAST)

UNITED STATES
DEPARTMENT OF THE INTERIOR
GEOLOGICAL SURVEY

STATE OF MINNESOTA
IRON RANGE RESOURCES AND REHABILITATION COMMISSION
A. M. DEYOANNIS, COMMISSIONER

FARQUHAR PEAK QUADRANGLE
MINNESOTA
7.5 MINUTE SERIES (TOPOGRAPHIC)

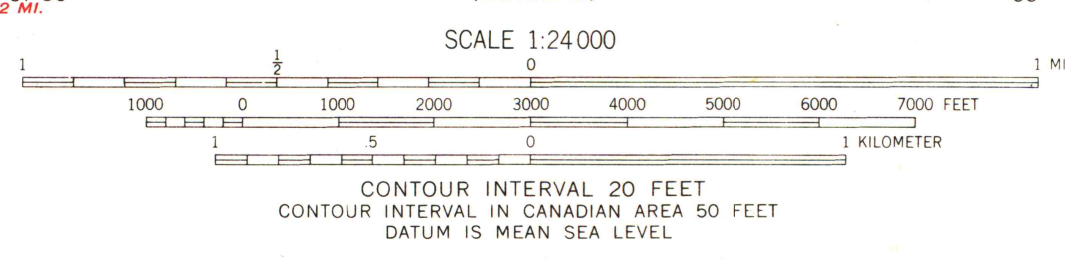
(THE CASCADES)



(MAPPER ISLAND)

Mapped, edited, and published by the Geological Survey
Control by USGS, USC&GS, and International Boundary Commission
Topography from aerial photographs by photogrammetric methods
Aerial photographs taken 1957. Field check 1960
Canadian portion copied from Pigeon River West quadrangle
(1:50 000) 1959, Army Survey Establishment, RCE
Depth curves compiled from charts furnished by
Minnesota Department of Conservation
Polyconic projection. 1927 North American datum
10,000-foot grid based on Minnesota coordinate system, north zone
1000-meter Universal Transverse Mercator grid ticks,
zone 16, shown in blue
Dashed land lines indicate approximate locations

2 1/2°
TRUE NORTH
MAGNETIC NORTH
APPROXIMATE MEAN
DECLINATION, 1960



QUADRANGLE LOCATION
MINN.
MAP AND AIR PHOTO LIBRARY
University of Wisconsin

ROAD CLASSIFICATION
Light-duty ——— Unimproved dirt - - - - -
FARQUHAR PEAK, MINN.
N 4752.5—W 8952.5/7.5
1960

THE U. S. PORTION OF THIS MAP COMPLIES WITH NATIONAL MAP ACCURACY STANDARDS
FOR SALE BY U. S. GEOLOGICAL SURVEY, DENVER 25, COLORADO OR WASHINGTON 25, D. C.
A FOLDER DESCRIBING TOPOGRAPHIC MAPS AND SYMBOLS IS AVAILABLE ON REQUEST