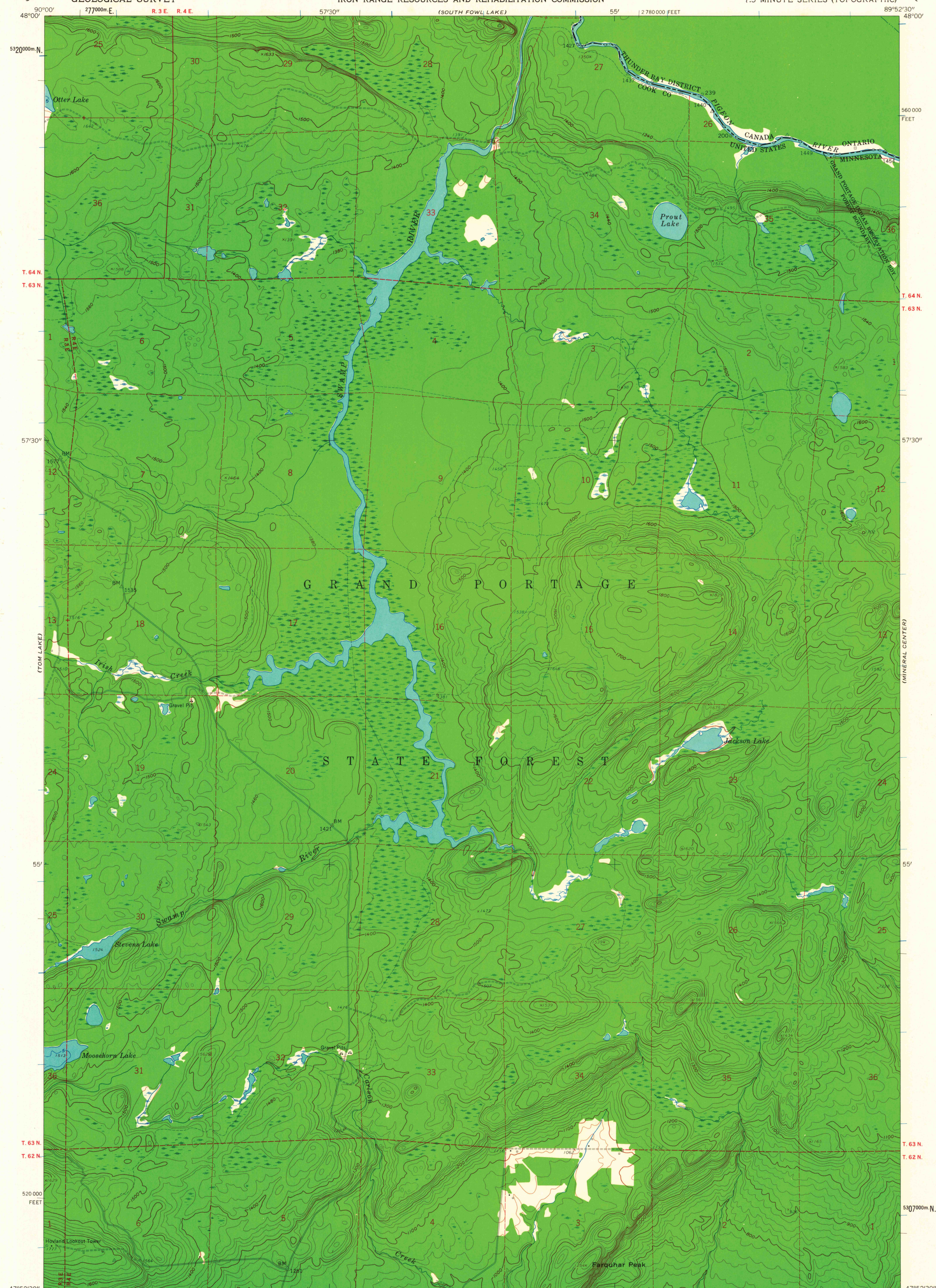
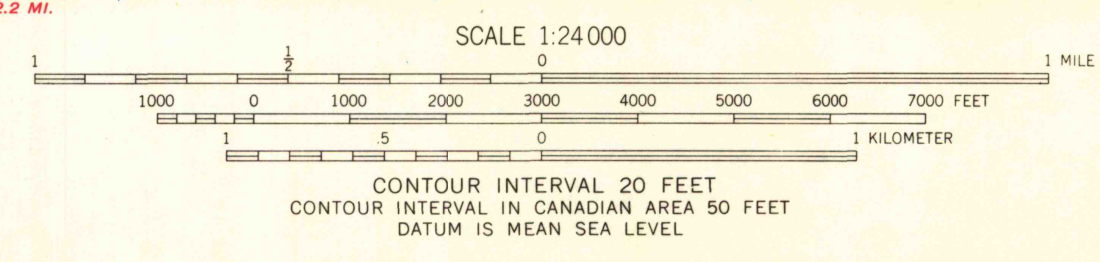
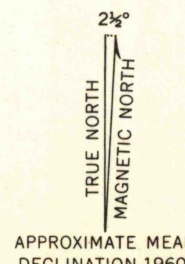


(FINE LAKE EAST)

(THE CASCADES)



Mapped, edited, and published by the Geological Survey
Control by USGS, USC&GS, and International Boundary Commission
Topography from aerial photographs by photogrammetric methods
Aerial photographs taken 1957. Field check 1960
Canadian portion copied from Pigeon River West quadrangle
(1:50 000) 1959, Army Survey Establishment, RCE
Depth curves compiled from charts furnished by
Minnesota Department of Conservation
Polyconic projection, 1927 North American datum
10,000-foot grid based on Minnesota coordinate system, north zone
1000-meter Universal Transverse Mercator grid ticks,
zone 16, shown in blue
Dashed land lines indicate approximate locations



USGS
Historical File
Topographic Division
ROAD CLASSIFICATION
Light-duty ————— Unimproved dirt - - - - -



FARQUHAR PEAK, MINN.
N 4752.5-W 8952.5/7.5
1960

THE U. S. PORTION OF THIS MAP COMPLIES WITH NATIONAL MAP ACCURACY STANDARDS
FOR SALE BY U. S. GEOLOGICAL SURVEY, DENVER 25, COLORADO OR WASHINGTON 25, D. C.
A FOLDER DESCRIBING TOPOGRAPHIC MAPS AND SYMBOLS IS AVAILABLE ON REQUEST

U.S.G.S.
FILE COPY
TOPOGRAPHIC DIVISION