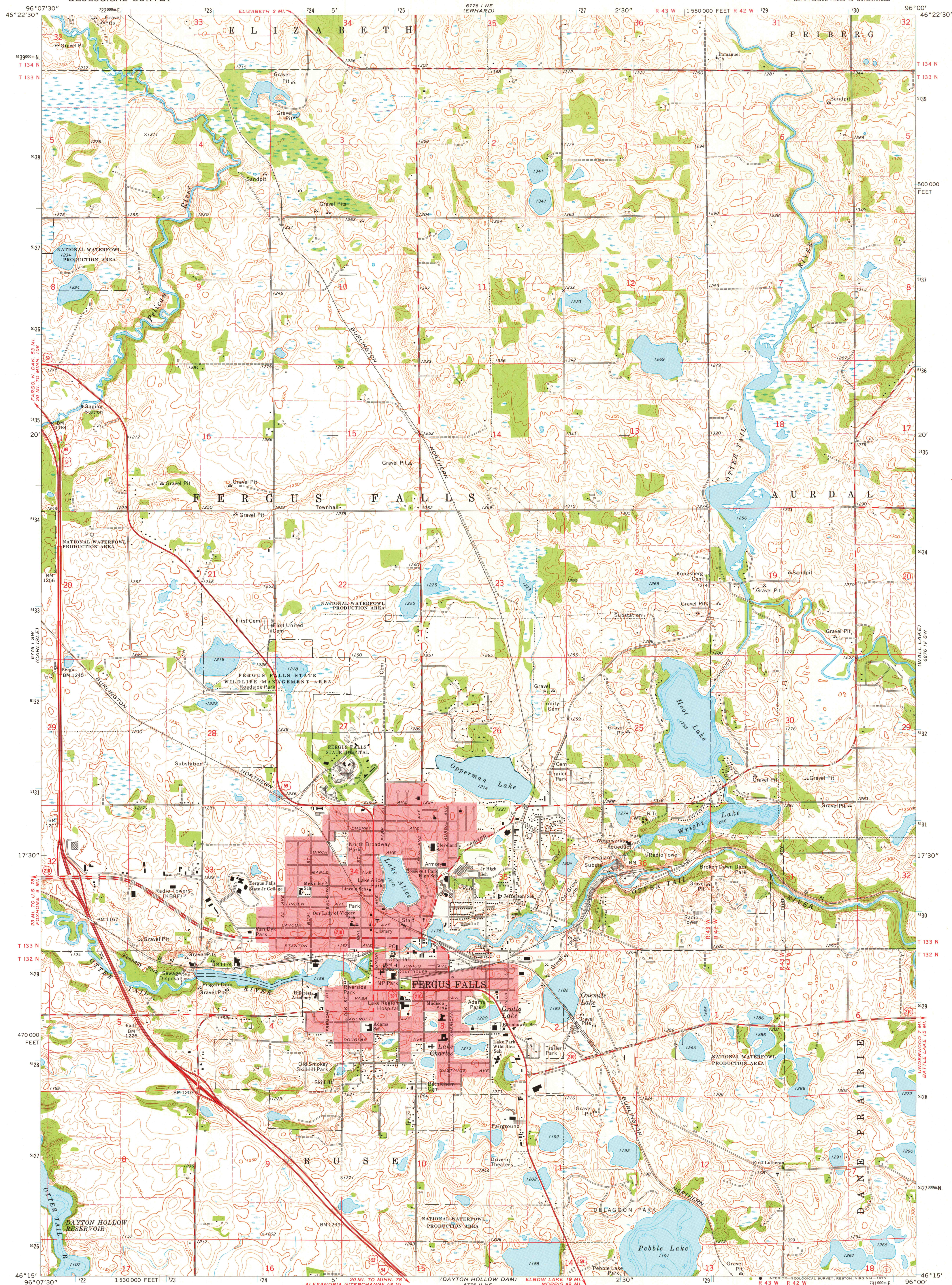


UNITED STATES
DEPARTMENT OF THE INTERIOR
GEOLOGICAL SURVEY

STATE OF MINNESOTA
DEPARTMENT OF ADMINISTRATION

FERGUS FALLS QUADRANGLE
MINNESOTA—OTTER TAIL CO.
7.5 MINUTE SERIES (TOPOGRAPHIC)



Mapped, edited, and published by the Geological Survey
Control by USGS, NOS/NOAA, and Minnesota Highway Department
Topography by photogrammetric methods from aerial
photographs taken 1972. Field checked 1973
Hydrography compiled from information furnished by
Minnesota Department of Natural Resources
Projection and 10,000-foot grid ticks: Minnesota coordinate
system, central zone (Lambert conformal conic)
1000-metre Universal Transverse Mercator grid ticks,
zone 14, shown in blue. 1927 North American datum
Red tint indicates areas in which only landmark buildings are shown
Fine red dashed lines indicate selected fence and field lines
where generally visible on aerial photographs
This information is unchecked

SCALE 1:24 000
CONTOUR INTERVAL 10 FEET
NATIONAL GEODETIC VERTICAL DATUM OF 1929



ROAD CLASSIFICATION
Primary highway, hard surface
Secondary highway, hard surface
Unimproved road
Interstate Route
U. S. Route
State Route

FERGUS FALLS, MINN.
SE/4 FERGUS FALLS 15' QUADRANGLE
N4615-W9600/7.5

DEC 11 1975

USGS
HISTORICAL FILE
TOPOGRAPHIC DIVISION
1973
AMS 6776 I SE—SERIES V872