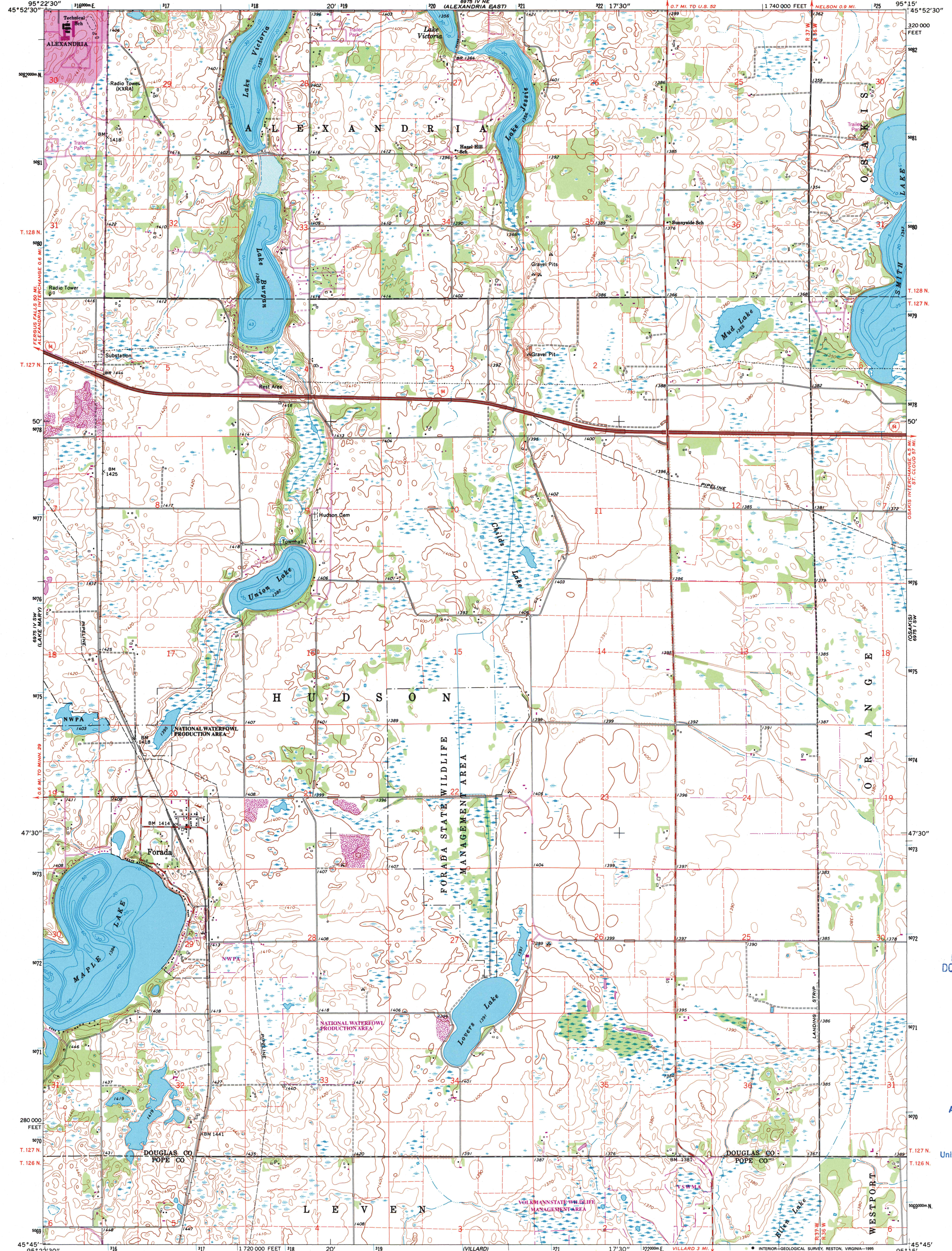


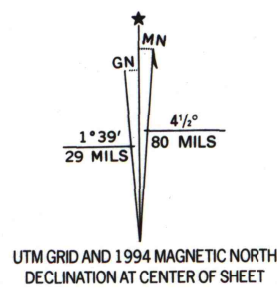
UNITED STATES  
DEPARTMENT OF THE INTERIOR  
GEOLOGICAL SURVEY

STATE OF MINNESOTA  
DEPARTMENT OF ADMINISTRATION

FORADA QUADRANGLE  
MINNESOTA  
7.5 MINUTE SERIES (TOPOGRAPHIC)



Produced by the United States Geological Survey  
Control by USGS and NOS/NOAA  
Topography by photogrammetric methods from aerial photographs  
taken 1965. Field checked 1966  
Hydrography compiled from information furnished by  
Minnesota Department of Natural Resources  
North American Datum of 1927 (NAD 27). Projection and  
1000-foot ticks: Minnesota coordinate system, central zone  
(Lambert conformal conic)  
Blue 1000-meter Universal Transverse Mercator ticks, zone 15  
North American Datum of 1983 (NAD 83) is shown by dashed  
corner ticks. The values of the shift between NAD 27 and NAD 83  
for 7.5-minute intersections are obtainable from National Geodetic  
Survey NADCON software  
There may be private inholdings within the boundaries of  
the National or State reservations shown on this map  
Fine red dashed lines indicate selected fence and field lines where  
generally visible on aerial photographs. This information is unchecked



SCALE 1:24,000  
1000 2000 3000 4000 5000 6000 7000 FEET  
1 KILOMETER  
CONTOUR INTERVAL 10 FEET  
DOTTED LINES REPRESENT 5-FOOT CONTOURS  
NATIONAL GEODETIC VERTICAL DATUM OF 1929

THIS MAP COMPLIES WITH NATIONAL MAP ACCURACY STANDARDS  
FOR SALE BY U.S. GEOLOGICAL SURVEY  
DENVER, COLORADO 80225, OR RESTON, VIRGINIA 22092  
A FOLDER DESCRIBING TOPOGRAPHIC MAPS AND SYMBOLS IS AVAILABLE ON REQUEST



ROAD CLASSIFICATION  
Primary highway, hard surface ———— Light-duty road, hard or improved surface  
Secondary highway, hard surface - - - - - Unimproved road - - - - -  
Interstate Route ———— U.S. Route ———— State Route ————

Revisions shown in purple compiled in cooperation with  
State of Minnesota agencies from imagery  
taken 1991-92 and other sources. Map edited 1994  
Information shown in purple may not meet USGS content  
standards and may conflict with previously mapped contours  
Purple tint indicates extension of urban areas

FORADA, MINN.  
45095-G3-TF-024  
1966  
REVISED 1994  
DMA 6975 IV SE-SERIES V872

U.S. Regional  
Depository Copy  
DO NOT DISCARD

A.H. ROBINSON  
MAP LIBRARY  
AUG 28 1995  
University of Wisconsin  
Madison