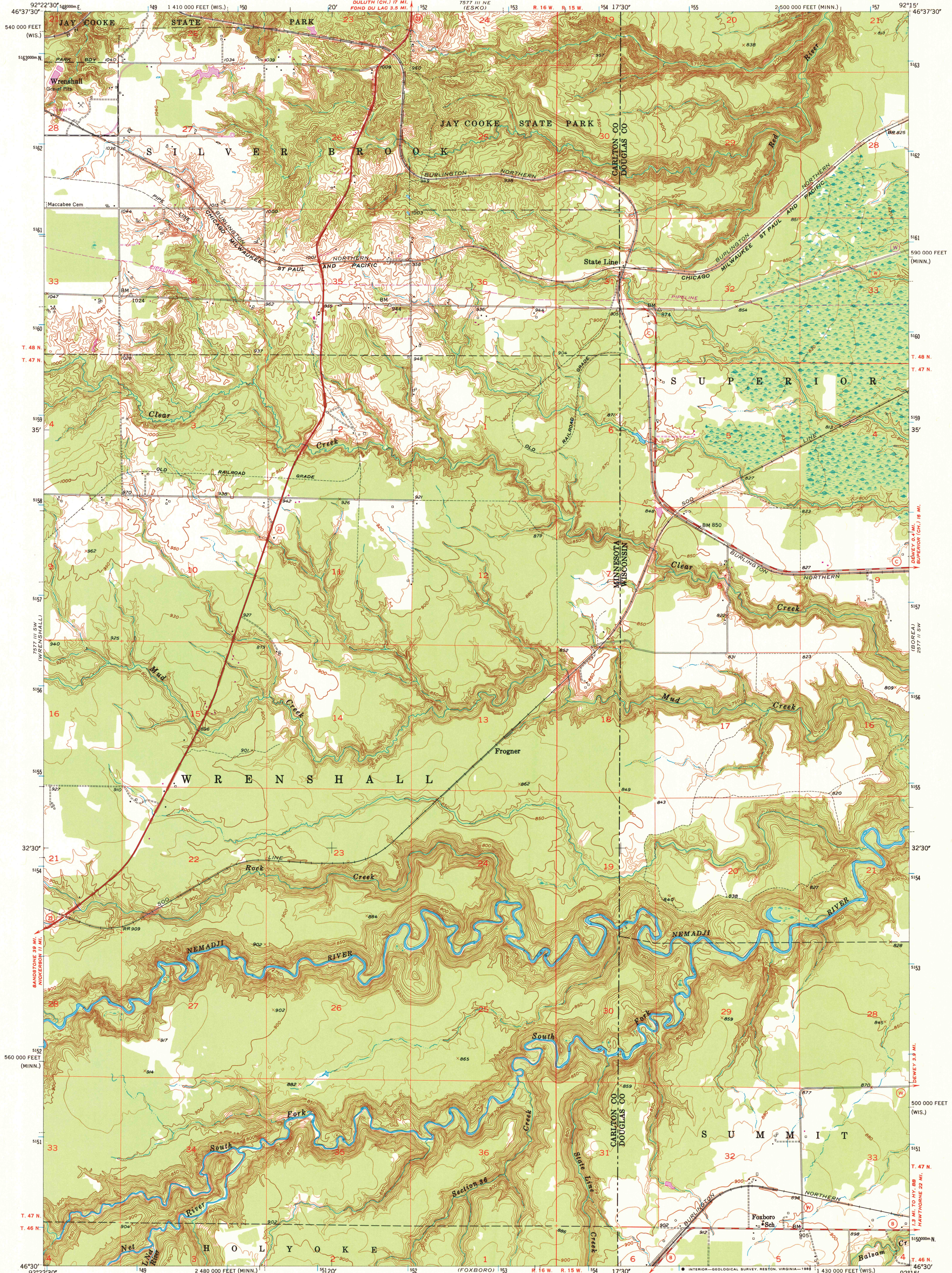


UNITED STATES
DEPARTMENT OF THE INTERIOR
GEOLOGICAL SURVEY

FROGNER QUADRANGLE
MINNESOTA-WISCONSIN
7.5 MINUTE SERIES (TOPOGRAPHIC)



Mapped, edited, and published by the Geological Survey

Control by USGS and USC&GS

Topography from aerial photographs by Kelsh plotter

Aerial photographs taken 1952-1953. Field check 1954

Polycyclic projection. 1927 North American datum
10,000-foot grids based on Minnesota coordinate system,
central zone, and Wisconsin coordinate system, north zone
1000-meter Universal Transverse Mercator grid ticks,
zone 15, shown in blue

Revisions shown in purple compiled from aerial photographs
taken 1975. This information not field checked

Map photorevised 1981

No major culture or drainage changes observed

SCALE 1:24 000

1 1000 0 1000 2000 3000 4000 5000 6000 7000 FEET

1 1000 0 1000 2000 3000 4000 5000 6000 7000 METERS

CONTOUR INTERVAL 10 FEET

NATIONAL GEODETIC VERTICAL DATUM OF 1929

ARTHUR H. ROBINSON MAP LIBRARY
University of Wisconsin-Madison

THIS MAP COMPLIES WITH NATIONAL MAP ACCURACY STANDARDS
FOR SALE BY U. S. GEOLOGICAL SURVEY, RESTON, VIRGINIA 22092

AND WISCONSIN GEOLOGICAL AND NATURAL HISTORY SURVEY, MADISON, WISCONSIN 53706

A FOLDER DESCRIBING TOPOGRAPHIC MAPS AND SYMBOLS IS AVAILABLE ON REQUEST

JUL 21 1993

U.S. Regional
Depository Copy
DO NOT DISCARD

ROAD CLASSIFICATION

Heavy-duty Light-duty
Medium-duty Unimproved dirt

State Route

QUADRANGLE LOCATION

TO place on the predicted North American Datum 1983,
move the projection lines 8 meters north and
14 meters east as shown by dashed corner ticks

There may be private inholdings within the boundaries of
the National or State reservations shown on this map

FROGNER, MINN.-WIS.

N4630-W9215/7.5

PHOTOINSPECTED 1981

1954
PHOTOREVISED 1975
AMS 7577 III SE-SERIES V872

1981
copy
1-1