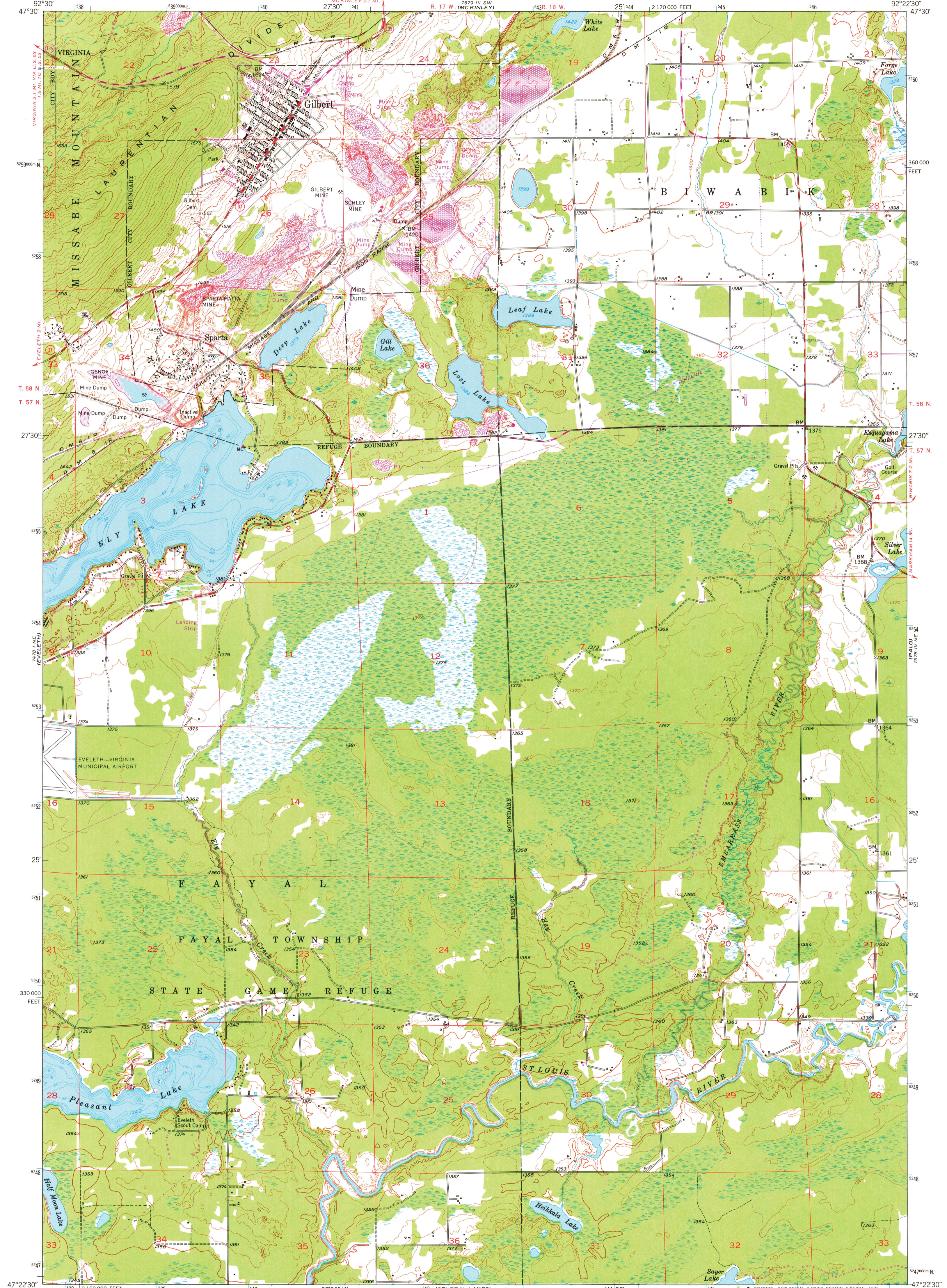
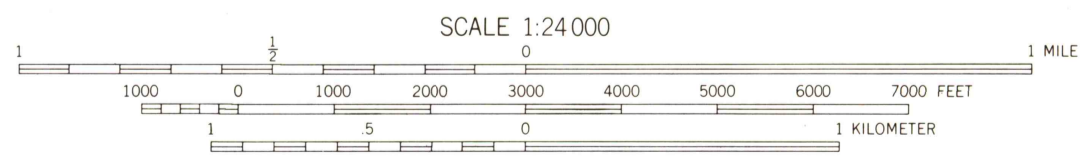
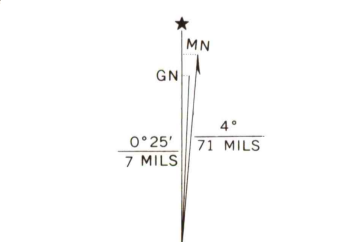


7439 USE
(GILBERT)

7529 USE
(BIB WABIK)



Mapped, edited, and published by the Geological Survey
Control by USGS and USC&GS
Topography from aerial photographs by Kelsh plotter
Aerial photographs taken 1950. Field check 1951
Polyconic projection. 1927 North American datum
10,000-foot grid based on Minnesota coordinate system,
north zone
1000-meter Universal Transverse Mercator grid ticks,
zone 15, shown in blue
Depth curves compiled from charts furnished by
Minnesota Department of Conservation
Revisions shown in purple compiled from aerial photographs
taken 1969. This information not field checked



CONTOUR INTERVAL 10 FEET
NATIONAL GEODETIC VERTICAL DATUM OF 1929

THIS MAP COMPLIES WITH NATIONAL MAP ACCURACY STANDARDS
FOR SALE BY U.S. GEOLOGICAL SURVEY, RESTON, VIRGINIA 22092
A FOLDER DESCRIBING TOPOGRAPHIC MAPS AND SYMBOLS IS AVAILABLE ON REQUEST



QUADRANGLE LOCATION

ROAD CLASSIFICATION	
Heavy-duty	4 LANE 16 LANE
Medium-duty	4 LANE 16 LANE
Light-duty	Light-duty
Unimproved dirt	Unimproved dirt
U.S. Route	State Route

USGS
Historical File
Topographic Division

GILBERT, MINN.
N4722.5-W9222.5/7.5

1951
PHOTO REVISITED 1969
AMS 7578 IV NW-SERIES V872

JUL 06 1978

4950