

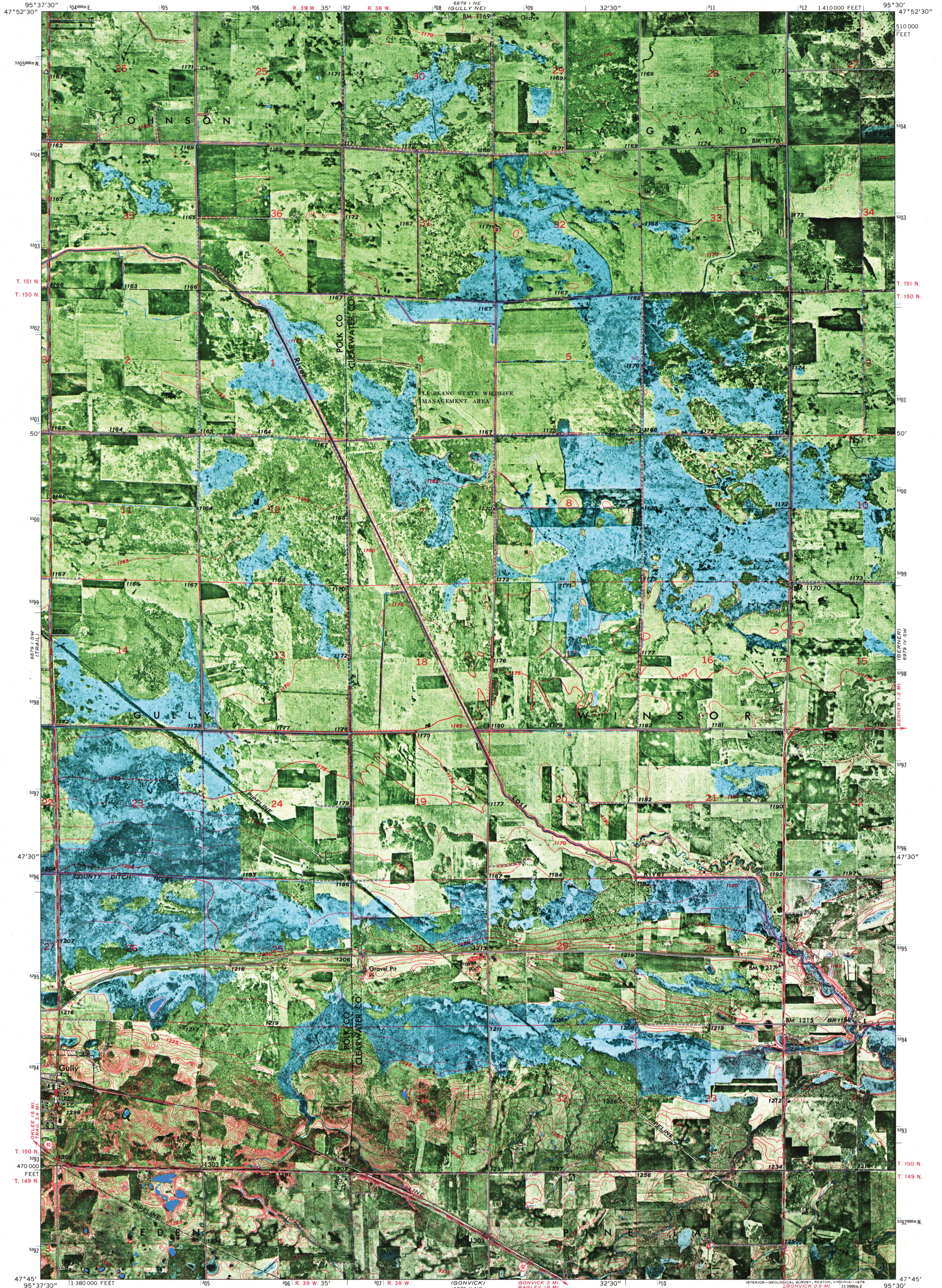
5929 1/4 NW
(GULLY NW)

UNITED STATES
DEPARTMENT OF THE INTERIOR
GEOLOGICAL SURVEY

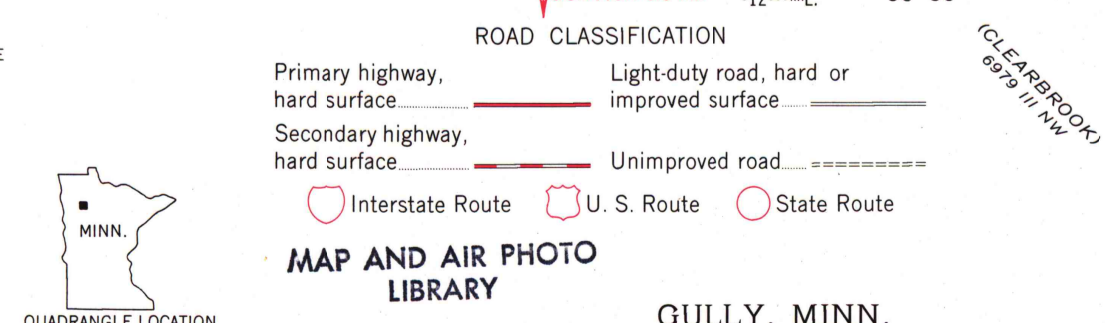
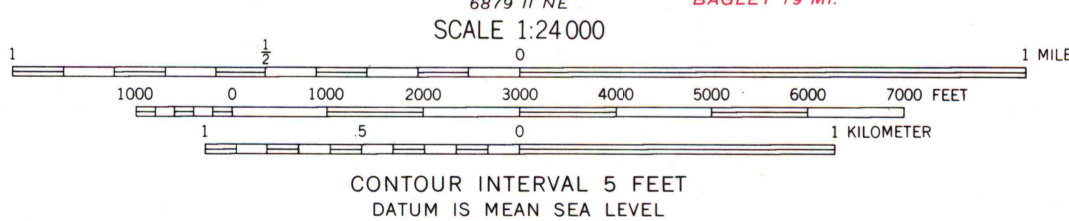
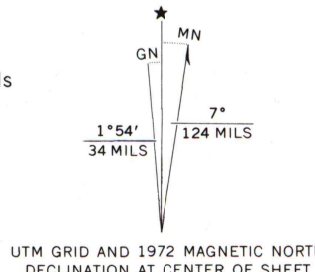
STATE OF MINNESOTA
DEPARTMENT OF ADMINISTRATION

GULLY QUADRANGLE
MINNESOTA
7.5 MINUTE SERIES ORTHOPHOTOMAP (TOPOGRAPHIC)

5929 1/4 NW
(BAILEY LAKE)



Mapped, edited, and published by the Geological Survey
Control by USGS and USC&GS
Orthophotomap prepared from high-altitude aerial photograph taken April 29, 1969. Topography by photogrammetric methods from aerial photographs taken 1968 and by planetable surveys 1972
Projection and 10,000-foot grid ticks: Minnesota coordinate system, north zone (Lambert conformal conic)
1000-meter Universal Transverse Mercator grid ticks, zone 15, shown in blue. 1927 North American datum



MAP AND AIR PHOTO LIBRARY
GULLY, MINN.
N4745-W9530/7.5
AUG 3 1976
1972

THIS MAP COMPLIES WITH NATIONAL MAP ACCURACY STANDARDS FOR SALE BY U.S. GEOLOGICAL SURVEY, RESTON, VIRGINIA 22092