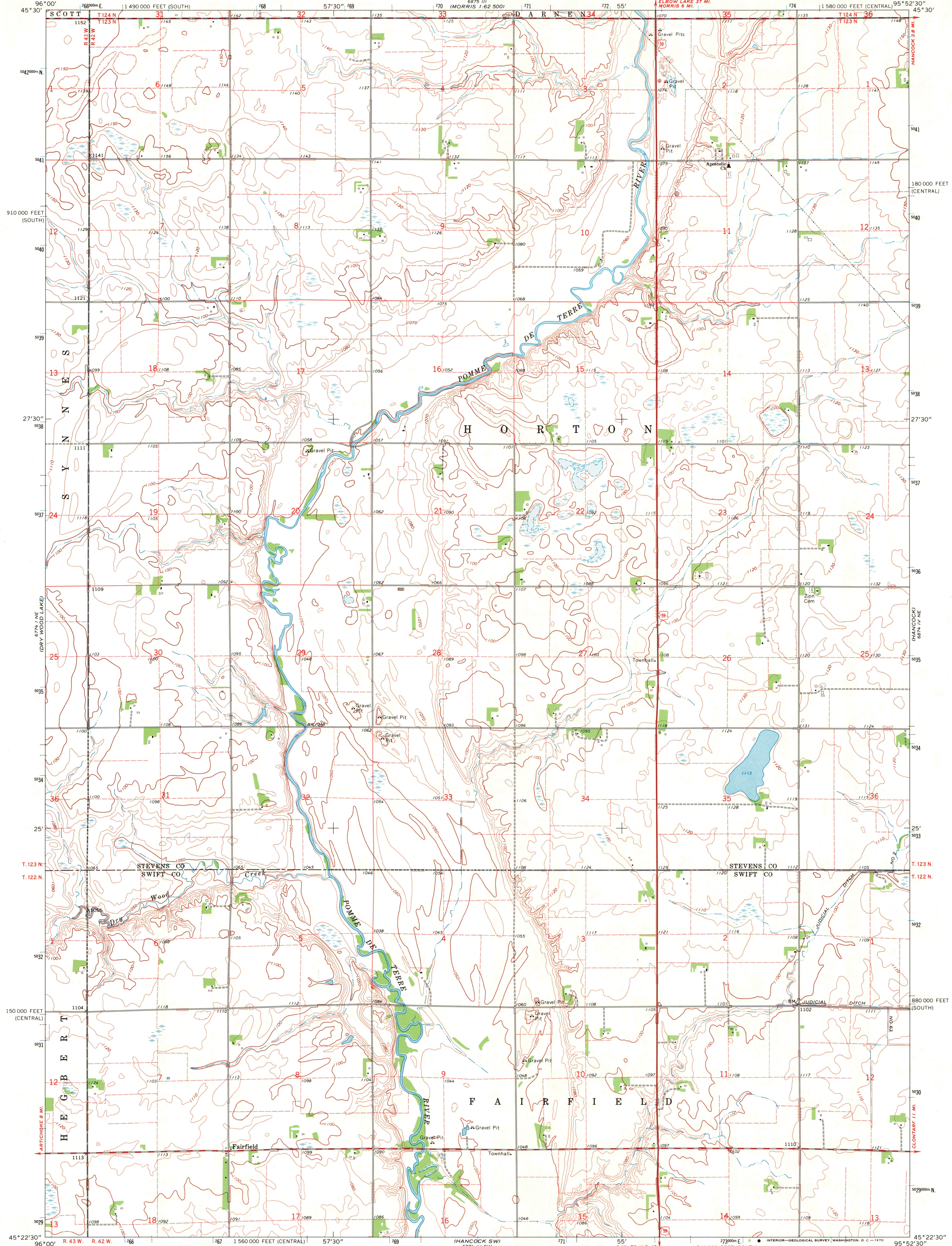


UNITED STATES
DEPARTMENT OF THE INTERIOR
GEOLOGICAL SURVEY

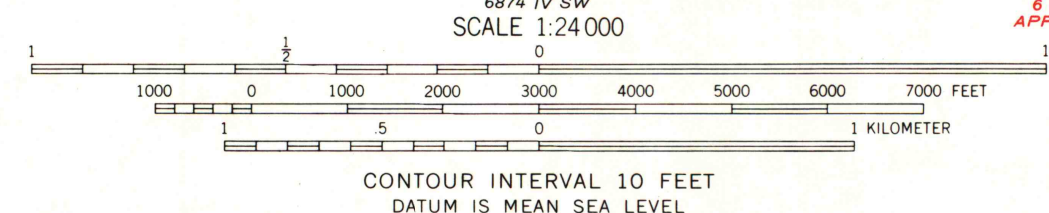
STATE OF MINNESOTA
DEPARTMENT OF ADMINISTRATION

HANCOCK NW QUADRANGLE
MINNESOTA
7.5 MINUTE SERIES (TOPOGRAPHIC)



Control by USGS and USC&GS
Topography by photogrammetric methods from aerial photographs taken 1965. Field checked 1968
Polyconic projection. 1927 North American datum
10,000-foot grids based on Minnesota coordinate system, central and south zones
1000-meter Universal Transverse Mercator grid ticks, zone 15, shown in blue
Fine red dashed lines indicate selected fence and field lines where generally visible on aerial photographs
This information is unchecked

UTM GRID AND 1968 MAGNETIC NORTH DECLINATION AT CENTER OF SHEET
2°05' 37" MILS
8" 142 MILS



ROAD CLASSIFICATION
Primary highway, all weather, hard surface
Secondary highway, all weather, hard surface
Light-duty road, all weather, improved surface
Unimproved road, fair or dry weather
U. S. Route

HANCOCK NW, MINN.
N4522.5—W9552.5/7.5
1968
AMS 6874 IV NW—SERIES V872

THIS MAP COMPLIES WITH NATIONAL MAP ACCURACY STANDARDS
FOR SALE BY U. S. GEOLOGICAL SURVEY, DENVER, COLORADO 80225, OR WASHINGTON, D. C. 20242
A FOLDER DESCRIBING TOPOGRAPHIC MAPS AND SYMBOLS IS AVAILABLE ON REQUEST

NOV 5 - 1970