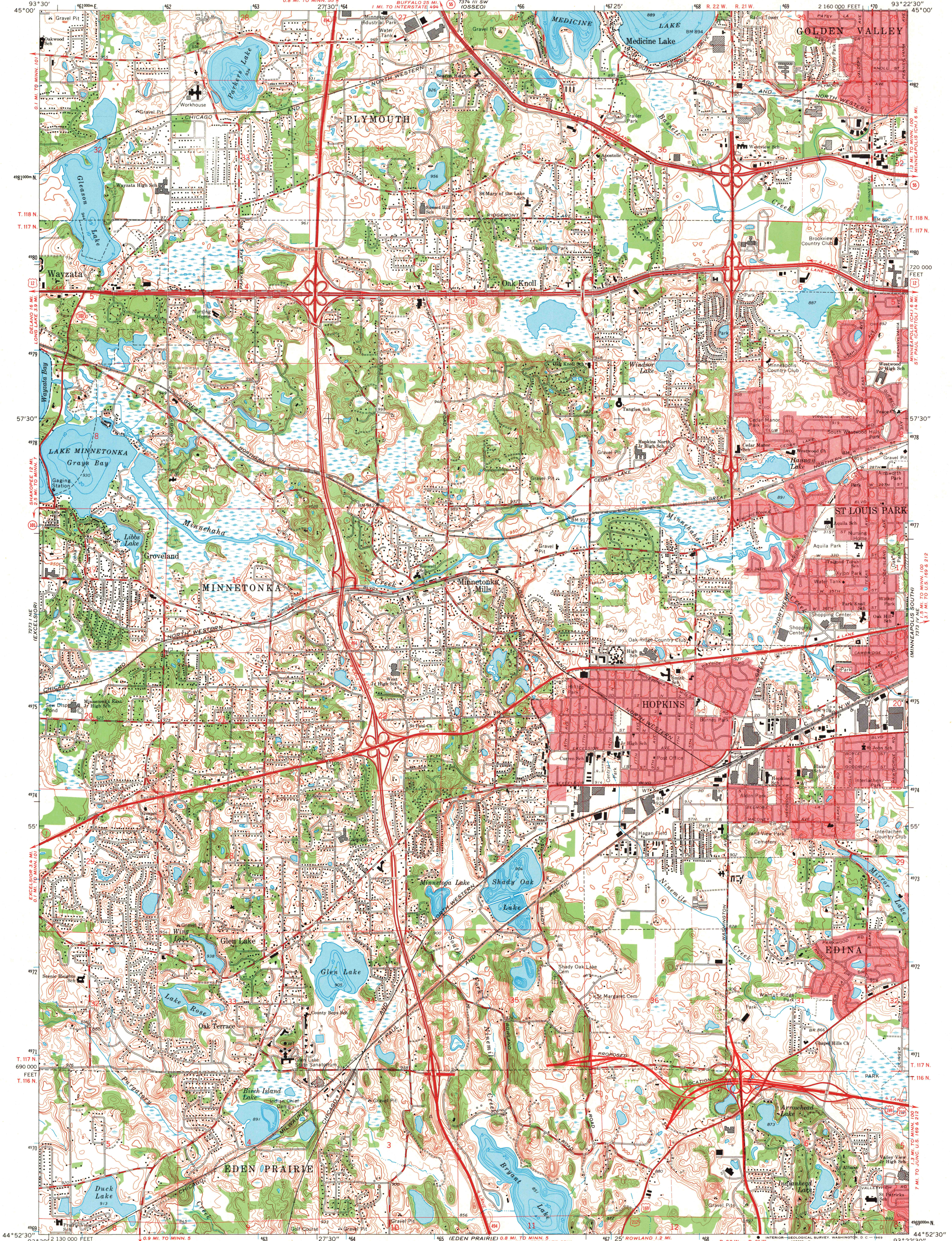


UNITED STATES
DEPARTMENT OF THE INTERIOR
GEOLOGICAL SURVEY

HOPKINS QUADRANGLE
MINNESOTA—HENNEPIN CO.
7.5 MINUTE SERIES (TOPOGRAPHIC)
NW/4 MINNEAPOLIS 15' QUADRANGLE

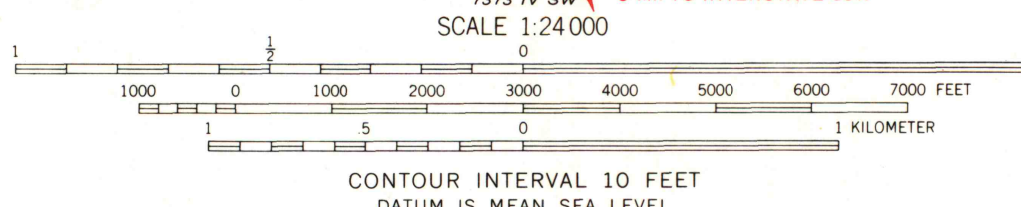


Mapped, edited, and published by the Geological Survey
Control by USGS and USC&GS

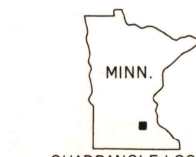
Topography by photogrammetric methods from aerial photographs
taken 1947. Field checked 1954. Revised 1967
Depth curves compiled from charts furnished by
Minnesota Department of Conservation

Polyconic projection. 1927 North American datum
10,000-foot grid based on Minnesota coordinate system, south zone
1000-meter Universal Transverse Mercator grid ticks,
zone 15, shown in blue

Red tint indicates areas in which only landmark buildings are shown
Fine red dashed lines indicate selected fence and field lines where
generally visible on aerial photographs. This information is unchecked



ROAD CLASSIFICATION
Heavy-duty ——— Light-duty ———
Medium-duty ——— Unimproved dirt ———
Interstate Route U.S. Route State Route



MINNESOTA PHOTO LIBRARY

HOPKINS, MINN.
NW/4 MINNEAPOLIS 15' QUADRANGLE
N4452.5—W9322.5/7.5

1967
GMS 7373 IV NW—SERIES V873

THIS MAP COMPLIES WITH NATIONAL MAP ACCURACY STANDARDS
FOR SALE BY U.S. GEOLOGICAL SURVEY, DENVER, COLORADO 80225, OR WASHINGTON, D.C. 20242
A FOLDER DESCRIBING TOPOGRAPHIC MAPS AND SYMBOLS IS AVAILABLE ON REQUEST