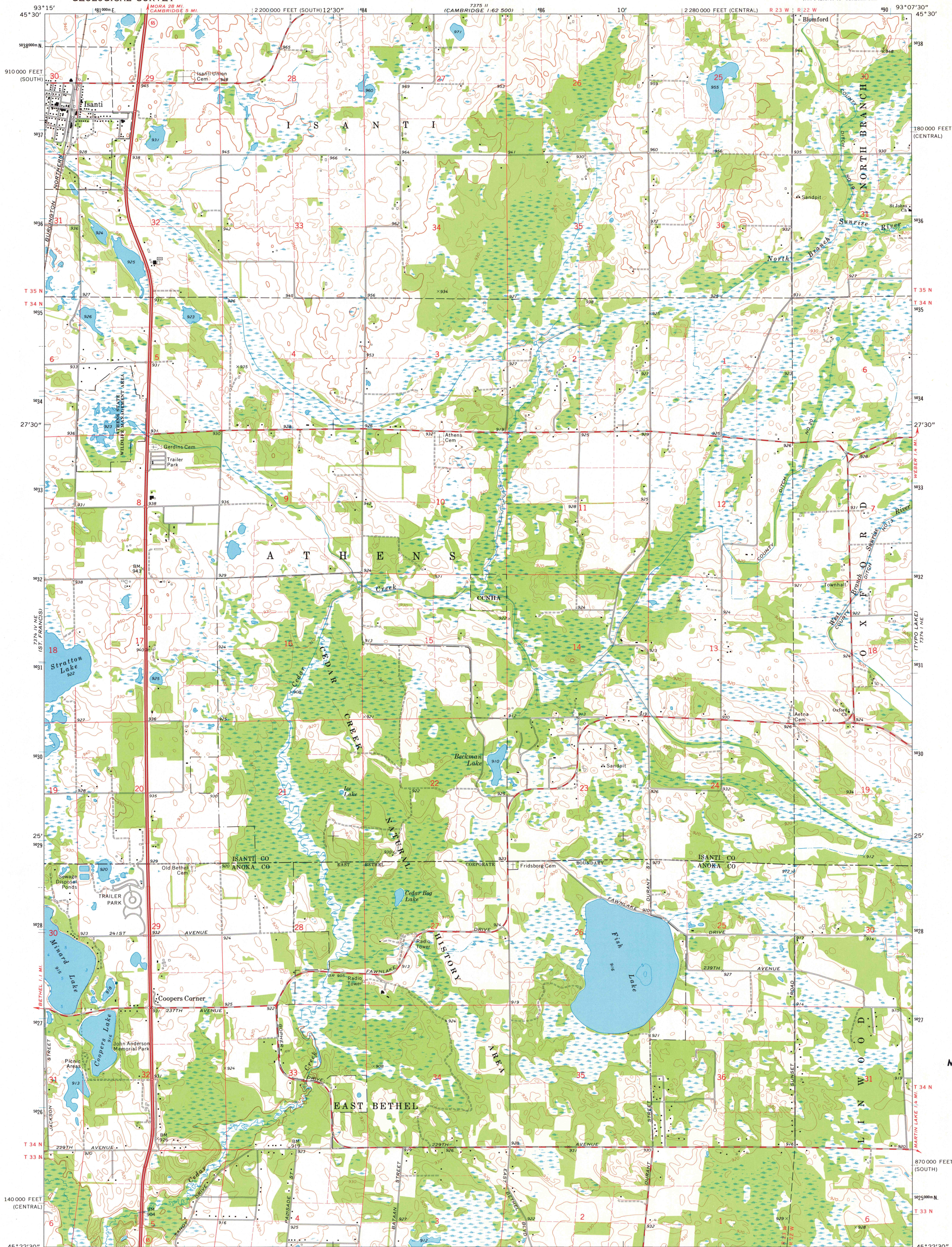


UNITED STATES
DEPARTMENT OF THE INTERIOR
GEOLOGICAL SURVEY

STATE OF MINNESOTA
DEPARTMENT OF ADMINISTRATION

ISANTI QUADRANGLE
MINNESOTA
7.5 MINUTE SERIES (TOPOGRAPHIC)
NW 1/4 ISANTI 15' QUADRANGLE



Mapped, edited, and published by the Geological Survey

Control by USGS, NOS/NOAA and Minnesota Highway Department

Topography by photogrammetric methods from aerial photographs taken 1973. Field checked 1974

Hydrography compiled from information furnished by Minnesota Department of Natural Resources

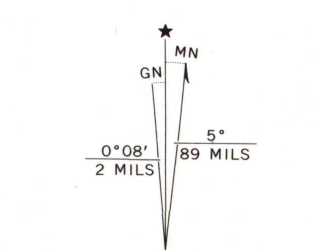
Projection: Minnesota coordinate system, central zone (Lambert conformal conic)

10,000-foot grid ticks based on Minnesota coordinate system, central and south zones

1000-metre Universal Transverse Mercator grid ticks, zone 15, shown in blue. 1927 North American datum

Fine red dashed lines indicate selected fence and field lines where generally visible on aerial photographs

This information is unchecked



CONTOUR INTERVAL 10 FEET
NATIONAL GEODETIC VERTICAL DATUM OF 1929

THIS MAP COMPLIES WITH NATIONAL MAP ACCURACY STANDARDS
FOR SALE BY U.S. GEOLOGICAL SURVEY, RESTON, VIRGINIA 22092
A FOLDER DESCRIBING TOPOGRAPHIC MAPS AND SYMBOLS IS AVAILABLE ON REQUEST

ROAD CLASSIFICATION
Primary highway, hard surface
Secondary highway, hard surface
Light-duty road, hard or improved surface
Unimproved road
Interstate Route
U. S. Route
State Route

ISANTI, MINN.
NW 1/4 ISANTI 15' QUADRANGLE
N4522.5-W9307.5/7.5
1974

AMS 7374 1 NW-SERIES V872

MAP AND AIR PHOTO
LIBRARY

JAN 18 1977

University of Wisconsin
Madison