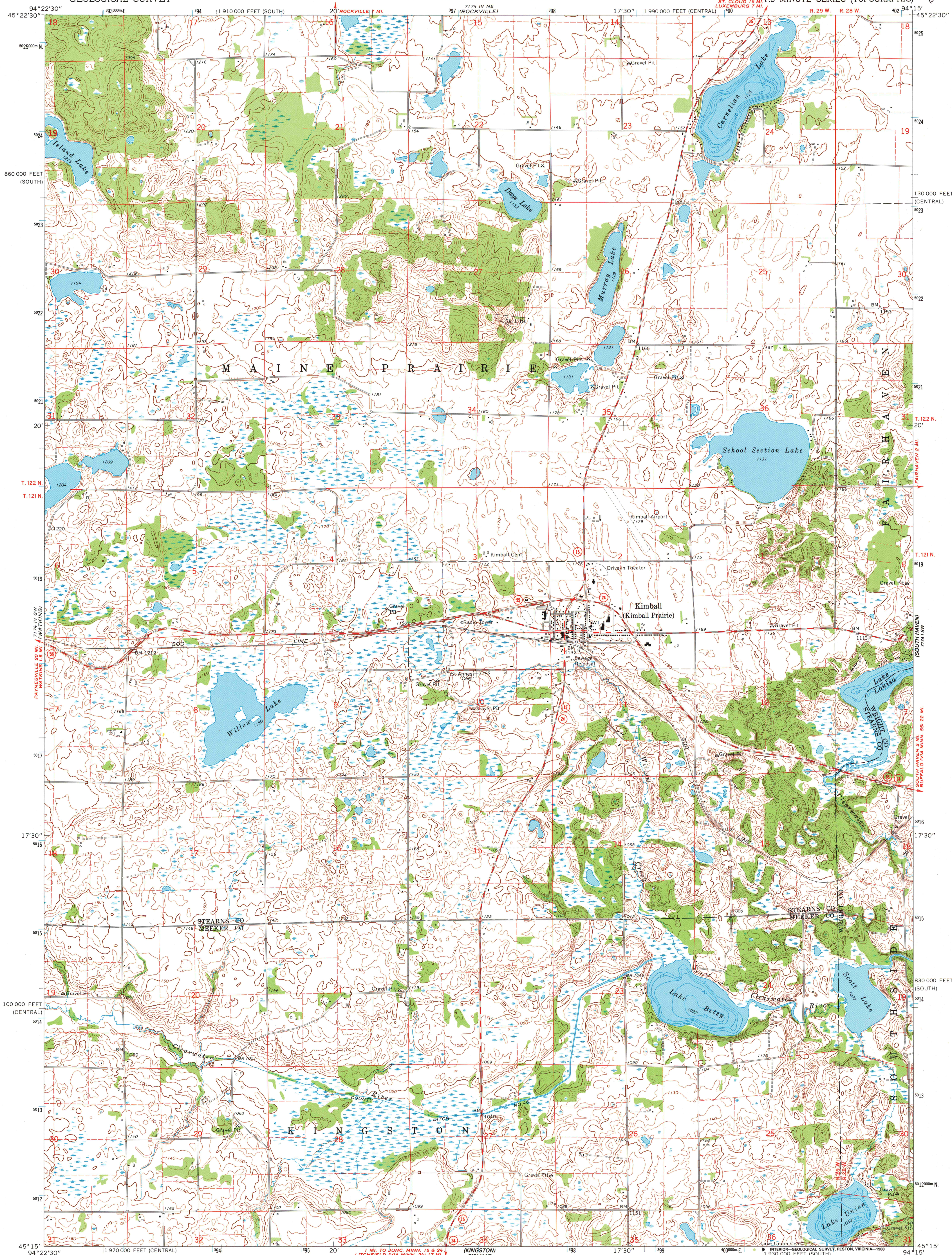


UNITED STATES
DEPARTMENT OF THE INTERIOR
GEOLOGICAL SURVEY

STATE OF MINNESOTA
DEPARTMENT OF ADMINISTRATION

KIMBALL QUADRANGLE
MINNESOTA

MINNESOTA
TOPOGRAPHIC



Maped, edited, and published by the Geological Survey

Control by USGS and USC&GS

Topography by photogrammetric methods from aerial photographs taken 1965. Field checked 1967

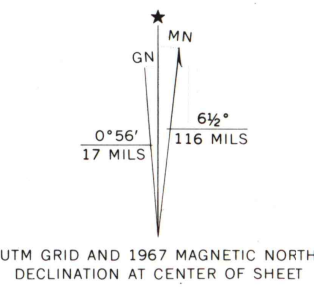
Depth curves compiled from charts furnished by Minnesota Department of Conservation

Polyconic projection. 1927 North American datum

10,000-foot grids based on Minnesota coordinate system, central and south zones

1000-meter Universal Transverse Mercator grid ticks, zone 15, shown in blue

Fine red dashed lines indicate selected fence and field lines where generally visible on aerial photographs. This information is unchecked



CONTOUR INTERVAL 10 FEET
NATIONAL GEODETIC VERTICAL DATUM OF 1929

THIS MAP COMPLIES WITH NATIONAL MAP ACCURACY STANDARDS
FOR SALE BY U. S. GEOLOGICAL SURVEY
DENVER, COLORADO 80225, OR RESTON, VIRGINIA 22092
A FOLDER DESCRIBING TOPOGRAPHIC MAPS AND SYMBOLS IS AVAILABLE ON REQUEST

To place on the predicted North American Datum 1983,
move the projection lines 7 meters north and
20 meters east as shown by dashed corner ticks

ROAD CLASSIFICATION
Medium-duty ——— Light-duty ———
Unimproved dirt ———
State Route ———



QUADRANGLE LOCATION

KIMBALL, MINN.
45094-C3-TF-024

1967

DMA 7174 IV SE-SERIES V872

A.H. ROBINSON
MAP LIBRARY
SEP 2 1988
University of Wisconsin
Madison