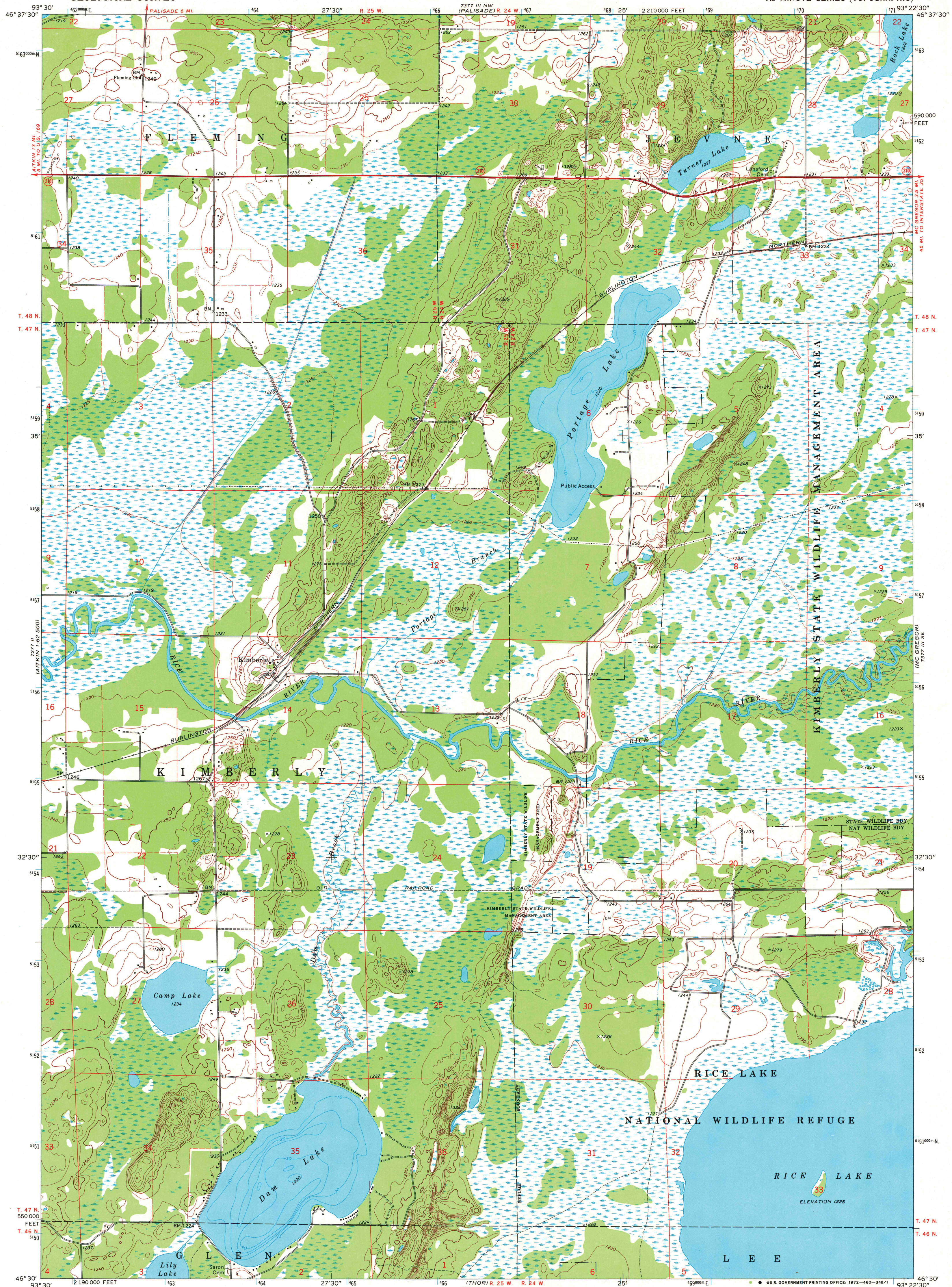


UNITED STATES
DEPARTMENT OF THE INTERIOR
GEOLOGICAL SURVEY

STATE OF MINNESOTA
DEPARTMENT OF ADMINISTRATION

KIMBERLY QUADRANGLE
MINNESOTA-AITKIN CO.
7.5 MINUTE SERIES (TOPOGRAPHIC)



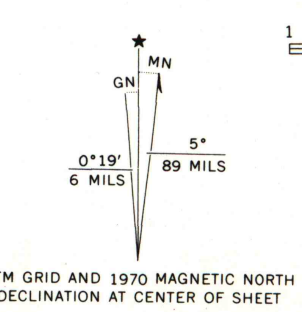
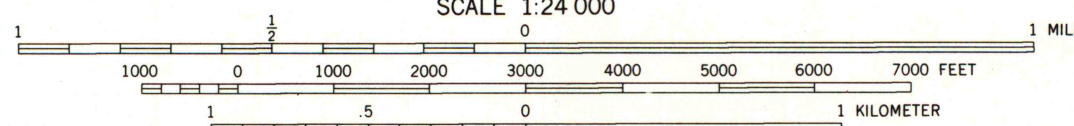
Mapped, edited, and published by the Geological Survey
Control by USGS and USC&GS

Topography by photogrammetric methods from aerial
photographs taken 1966. Field checked 1970

Depth curves compiled from charts furnished
by Minnesota Department of Conservation

Polyconic projection. 1927 North American datum
10,000-foot grid based on Minnesota coordinate system, central zone
1000-meter Universal Transverse Mercator grid ticks,
zone 15, shown in blue

Fine red dashed lines indicate selected fence and field lines where
generally visible on aerial photographs. This information is unchecked



ROAD CLASSIFICATION
Primary highway, all weather. Light-duty road, all weather,
hard surface. Unimproved road, fair or dry
weather. State Route



KIMBERLY, MINN.
N4630-W9322.5/7.5

1970

MAP AND AIR PHOTO
LIBRARY

JAN 10 1973

University of Wisconsin