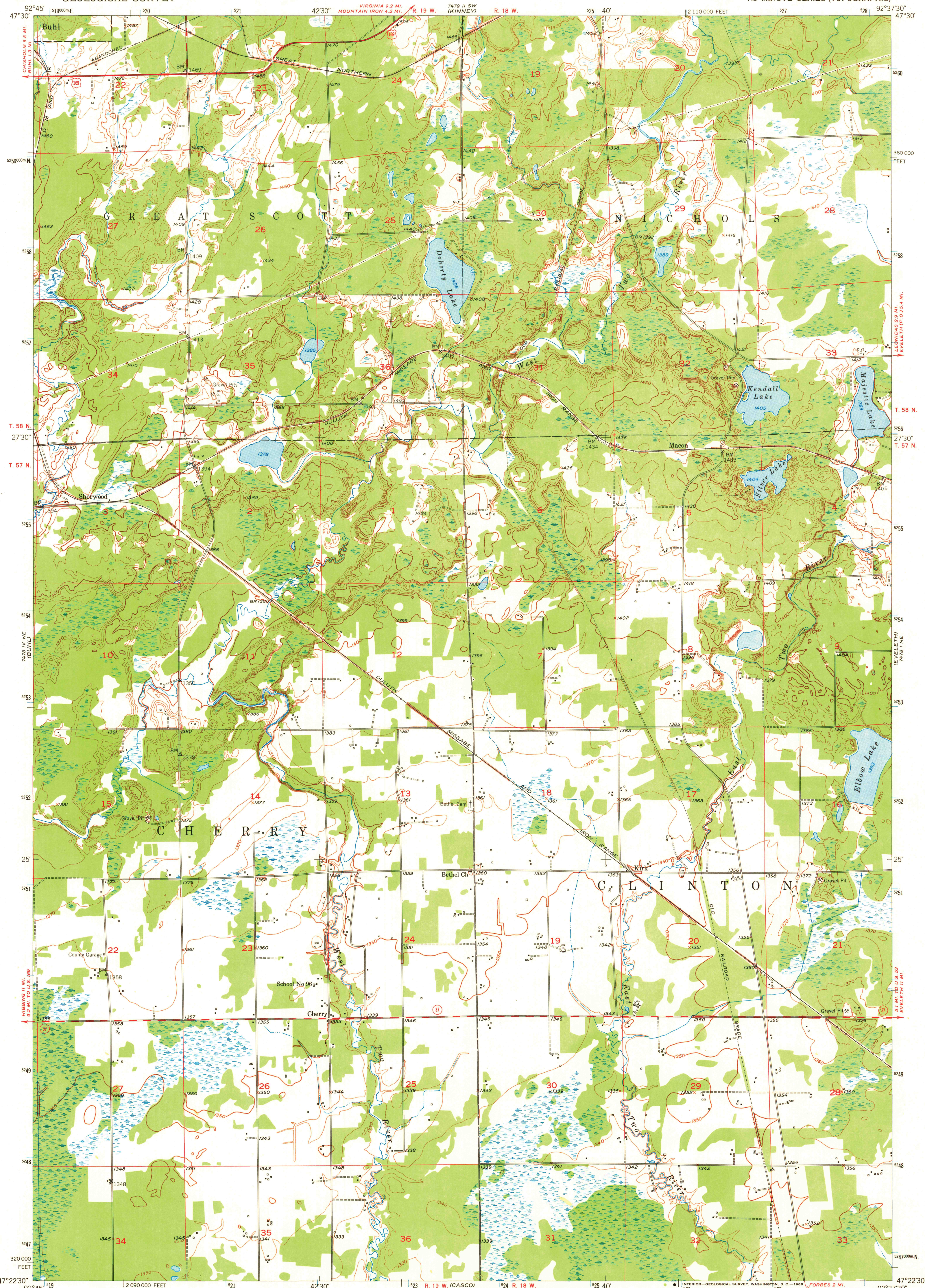


UNITED STATES  
DEPARTMENT OF THE INTERIOR  
GEOLOGICAL SURVEY

STATE OF MINNESOTA  
IRON RANGE RESOURCES AND REHABILITATION COMMISSION

KIRK QUADRANGLE  
MINNESOTA-ST. LOUIS CO.  
7.5 MINUTE SERIES (TOPOGRAPHIC)

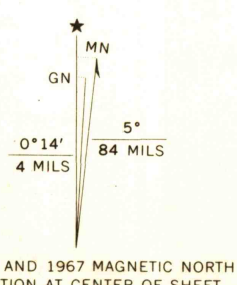


Mapped, edited, and published by the Geological Survey

Control by USGS and USC&GS

Topography by photogrammetric methods from aerial photographs taken 1950. Field checked 1951

Polyconic projection. 1927 North American datum  
10,000-foot grid based on Minnesota coordinate system,  
north zone  
1000-meter Universal Transverse Mercator grid ticks,  
zone 15, shown in blue



CONTOUR INTERVAL 10 FEET  
DATUM IS MEAN SEA LEVEL

THIS MAP COMPLIES WITH NATIONAL MAP ACCURACY STANDARDS  
FOR SALE BY U.S. GEOLOGICAL SURVEY, DENVER, COLORADO 80225, OR WASHINGTON, D.C. 20242  
A FOLDER DESCRIBING TOPOGRAPHIC MAPS AND SYMBOLS IS AVAILABLE ON REQUEST

ROAD CLASSIFICATION  
Heavy-duty ——— Light-duty ———  
Medium-duty ——— Unimproved dirt ———  
U.S. Route ——— State Route ———  
USGS Historical File Topographic Division

KIRK, MINN.  
N4722.5-W9237.5/7.5

1951

AMS 7478 I NW—SERIES V872

U.S.G.S.  
FILE COPY  
TOPOGRAPHIC DIVISION

1605

MAY 7 1959